

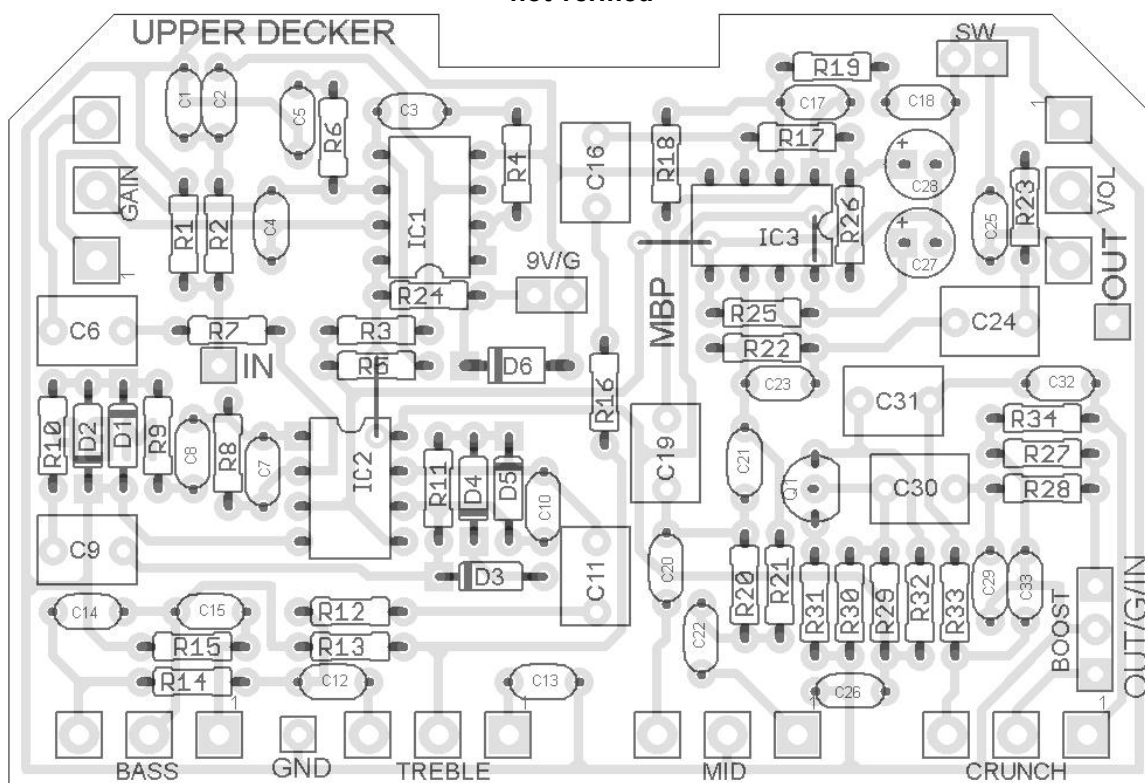
UPPER DECKER

FX TYPE: Distortion

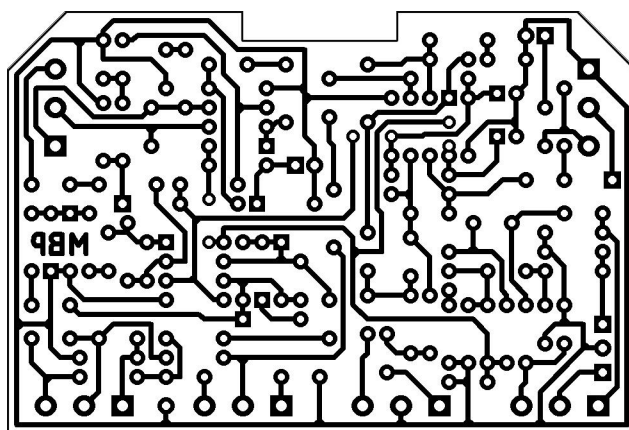
© 2013 [madbeanpedals](http://www.madbeanpedals.com)

Based on the Wampler® Triple Wreck™

~ not verified ~



3.28" W x 2.23" H



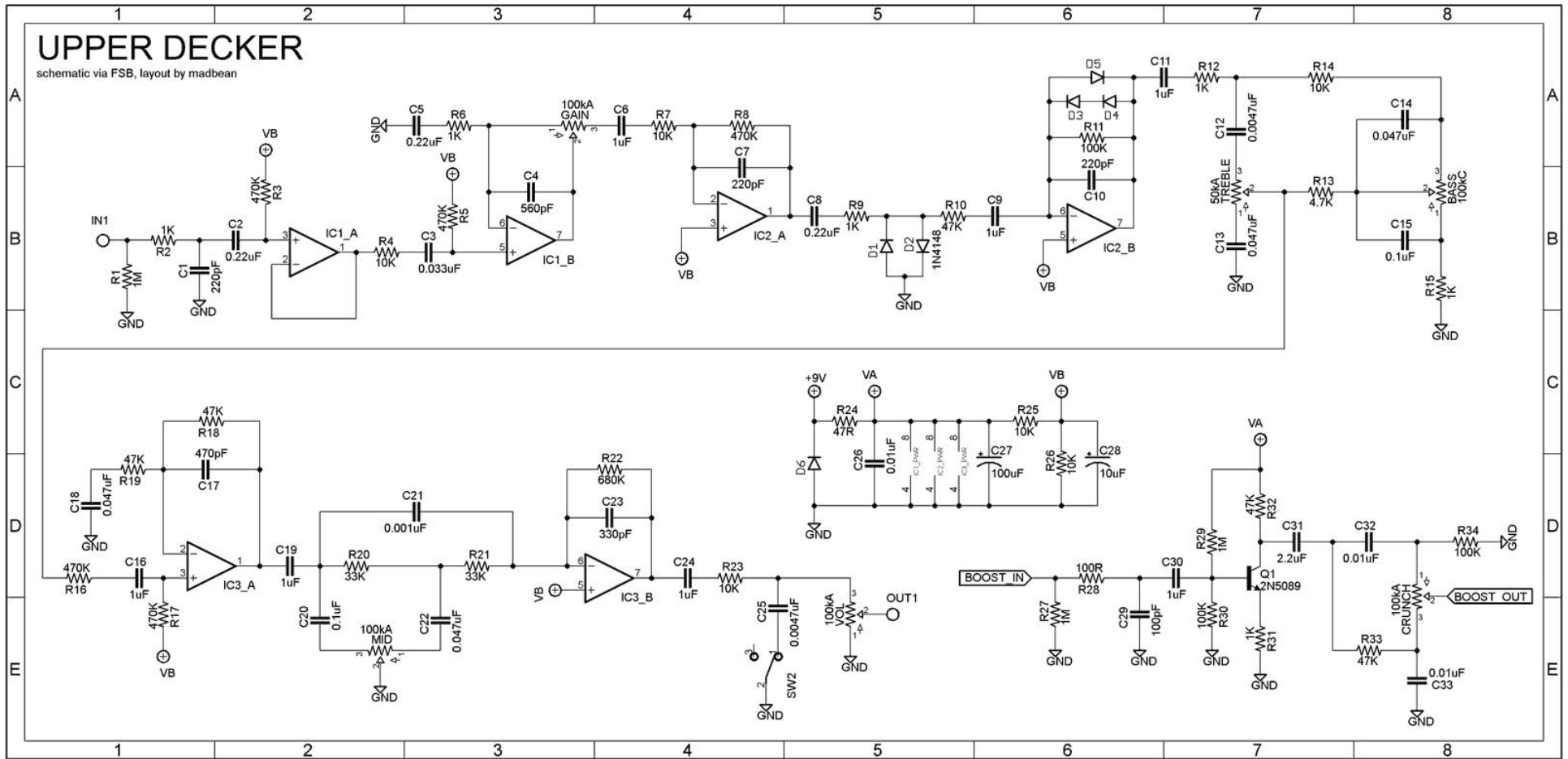
This project is intended for DIY use only!

www.madbeanpedals.com

BUILD.SHARE.LEARN

UPPER DECKER

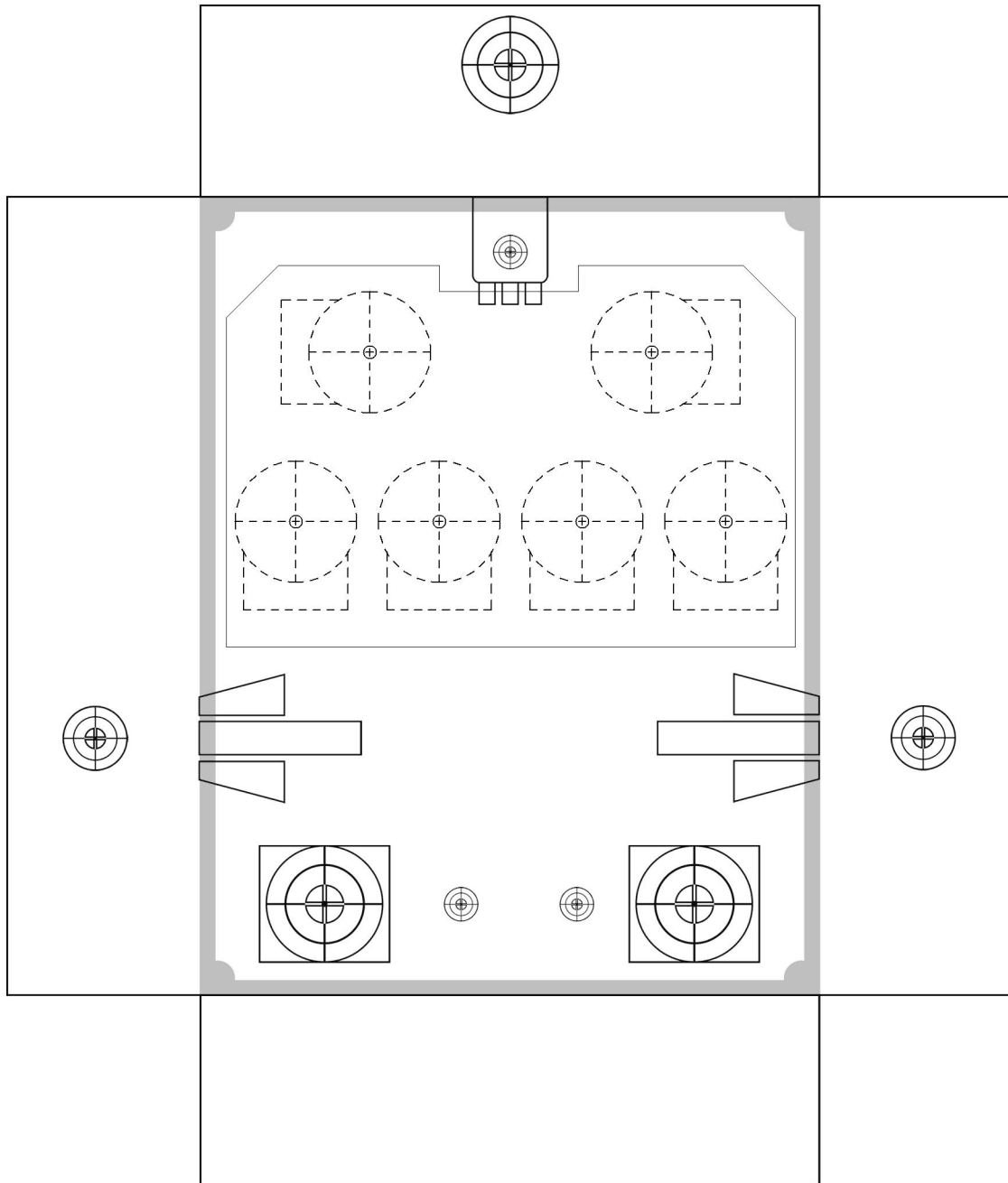
schematic via FSB, layout by madbean



Resistors		Caps		Type	Diodes	
R1	1M	C1	220pF	Ceramic	D1 - D5	1N4148
R2	1K	C2	0.22uF	Film	D6	1N4001
R3	470K	C3	0.033uF	Film	Transistor	
R4	10K	C4	560pF	Ceramic	Q1	2N5089
R5	470K	C5	0.22uF	Film	IC	
R6	1K	C6	1uF	Film	IC1 - IC3	JRC4580?
R7	10K	C7	220pF	Ceramic	Switch	
					SPDT	
R8	470K	C8	0.22uF	Film	SW2	(On/On)
R9	1K	C9	1uF	Film	Pots	
R10	47K	C10	220pF	Ceramic	BASS	100kC
R11	100K	C11	1uF	Film	CRUNCH	100kA
R12	1K	C12	0.0047uF	Film	GAIN	100kA
R13	4.7K	C13	0.047uF	Film	MID	100kA
R14	10K	C14	0.047uF	Film	TREBLE	50kA
R15	1K	C15	0.1uF	Film	VOL	100kA
R16	470K	C16	1uF	Film		
R17	470K	C17	470pF	Ceramic		
R18	47K	C18	0.047uF	Film		
R19	47K	C19	1uF	Film		
R20	33K	C20	0.1uF	Film		
R21	33K	C21	0.001uF	Film		
R22	680K	C22	0.047uF	Film		
R23	10K	C23	330pF	Ceramic		
R24	47R	C24	1uF	Film		
R25	10K	C25	0.0047uF	Film		
R26	10K	C26	0.01uF	Film		
R27	1M	C27	100uF	Electrolytic		
R28	100R	C28	10uF	Electrolytic		
R29	1M	C29	100pF	Ceramic		
R30	100K	C30	1uF	Film		
R31	1K	C31	2.2uF	Film		
R32	47K	C32	0.01uF	Film		
R33	47K	C33	0.01uF	Film		
R34	100K					

Not sure what the ICs are, so I'm guessing 4580D or 4580DD.
Socket and experiment!

1590 BB
5.8" W x 6.8" H



This template is approximate! You can move the switch in between the jacks to give yourself more room for the top mounted DC jack.