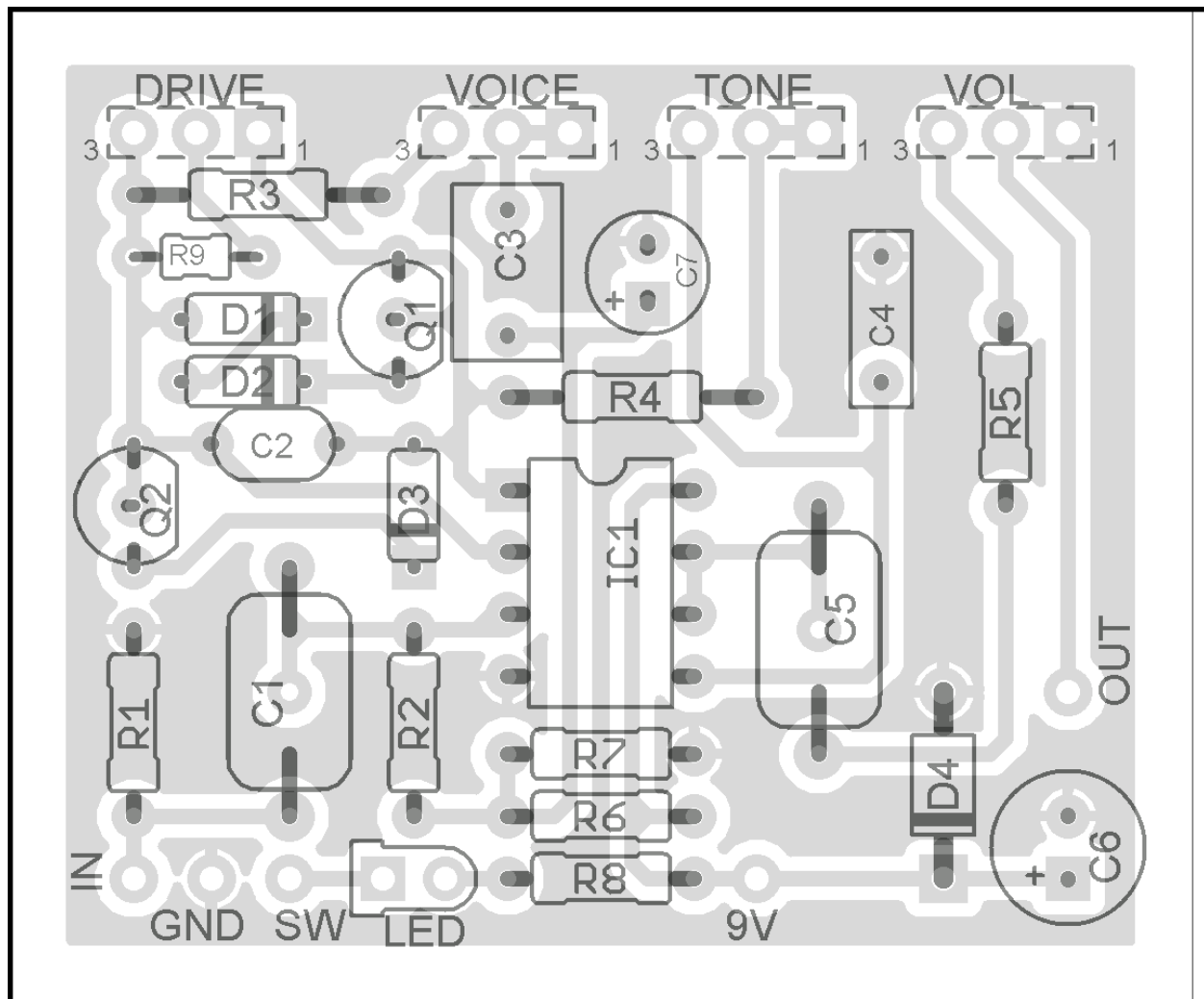


# SERENDIPITY

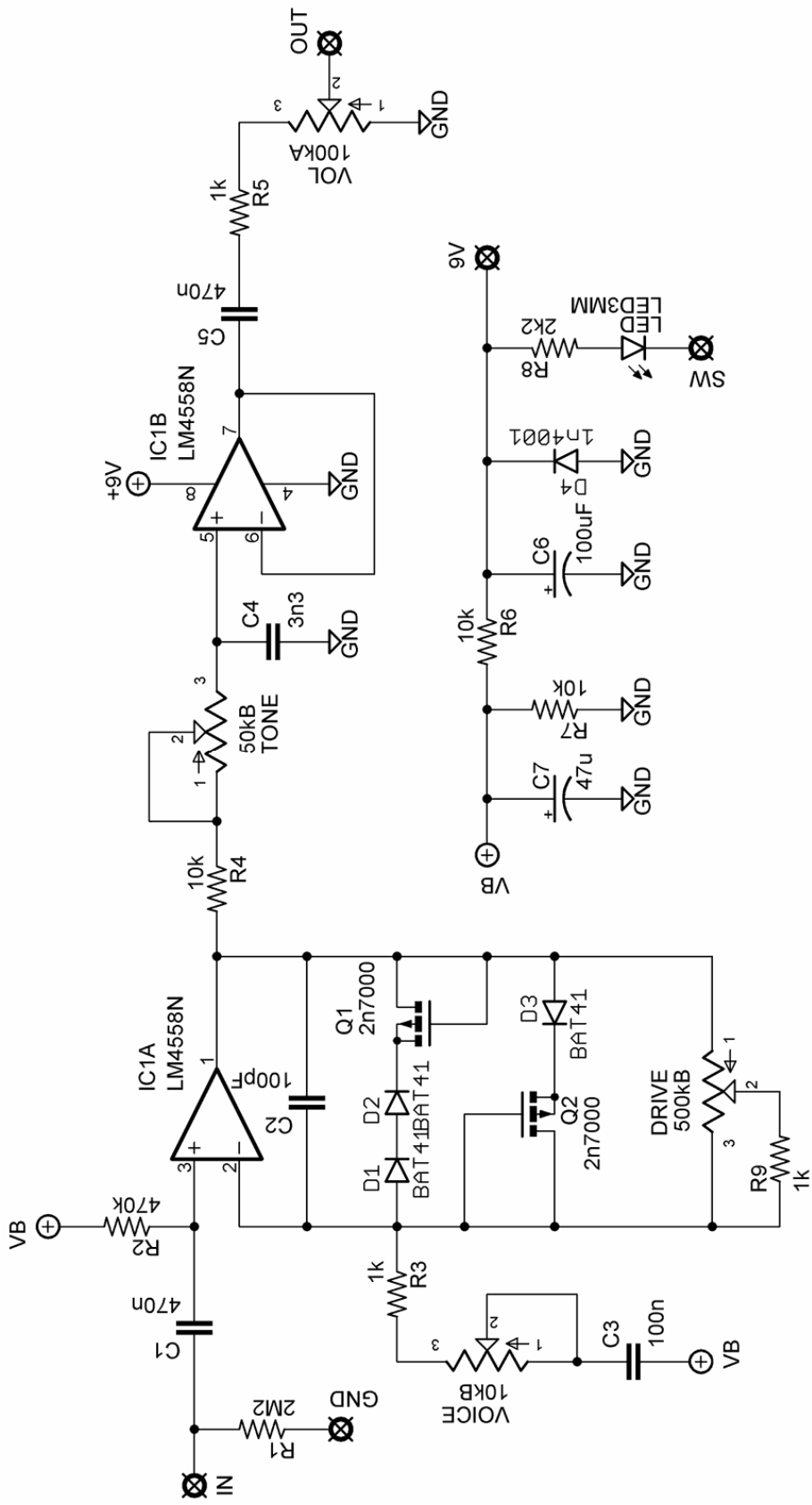
(Based on the Hermida Zendrive)

COMPONENTS + LAYOUT

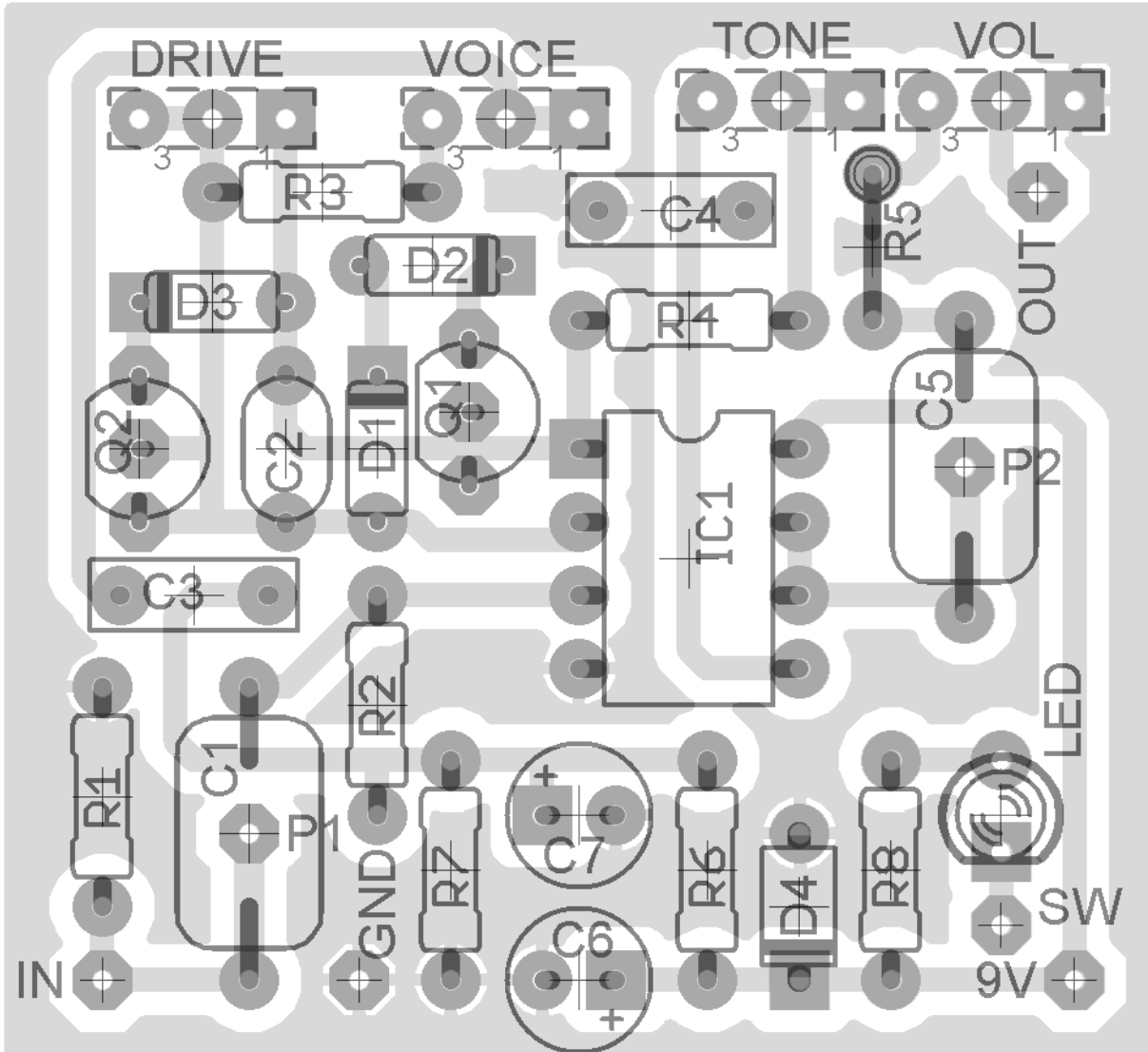
VER.3.5 09/21/09

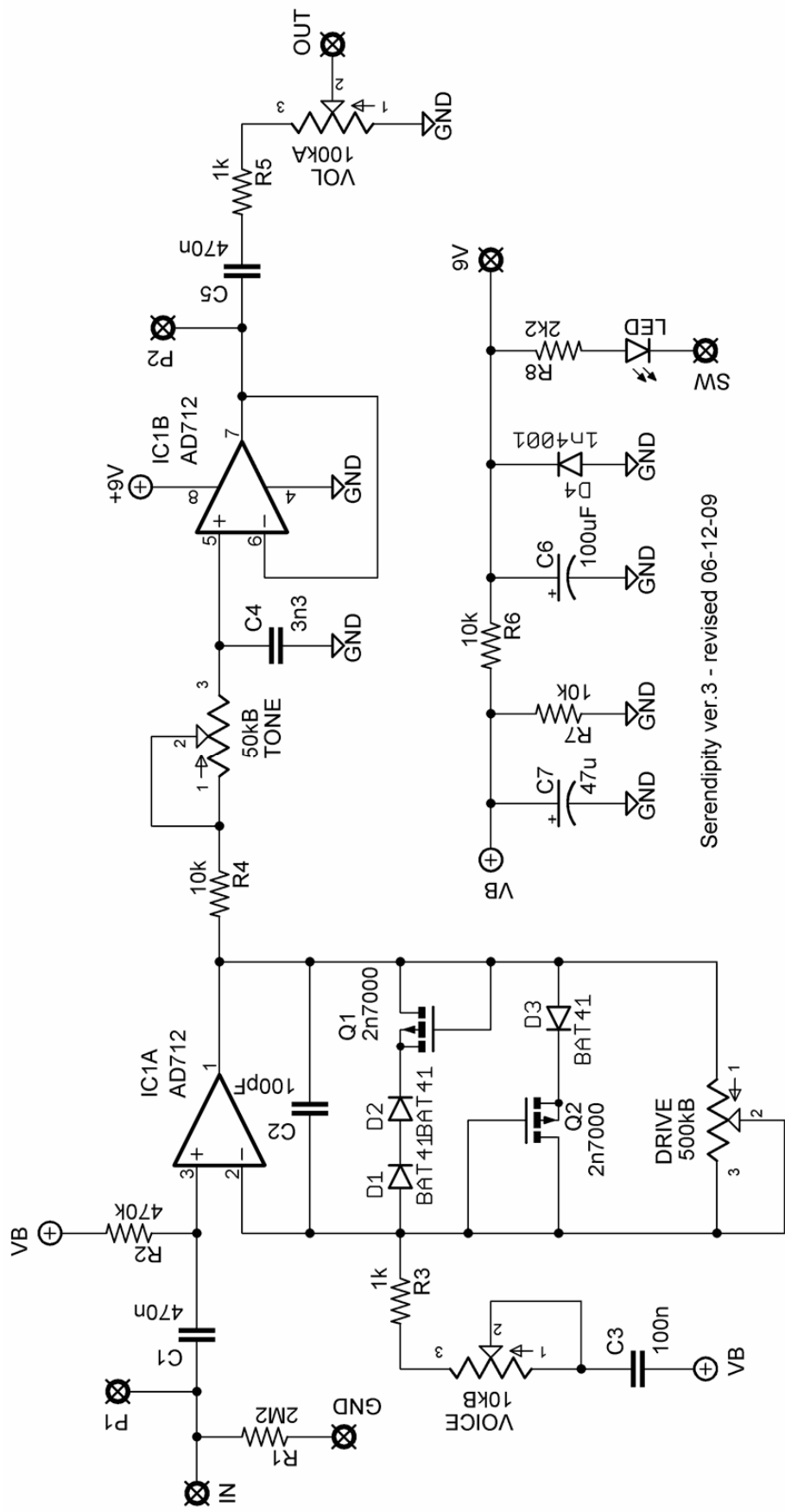


Added R9 - a 1k resistor b/w lug 3 and the wiper of the Drive Pot.



VER.3 06-14-09





Part	Value
R1	2M2
R2	470k
R3	1k
R4	10k
R5	1k
R6	10k
R7	10k
R8	2k2
R9	1k
C1	470n
C2	100pF
C3	100n
C4	3n3
C5	470n
C6	100uF
C7	47u
D1 - D3	BAT41
D4	1n4001
IC1	AD712
Q1, Q2	2n7000
VOL	100kA
TONE	50kB
VOICE	10kB
DRIVE	500kB

## Notes

- You can sub 1n34a for the BAT41 diodes.
- **SW** connects to your 3PDT to toggle the **LED**.
- AD712 is a bit tough to source. Try a regular JRC4558. It sounds very good in this circuit.
- **C1** and **C5** pad spacing is set up for the orange drop caps I offer for the board (these have 5-hole spacing). Pads P1 and P2 were included if you are using another type of cap (like box-type) which has a 3-hole spacing.

