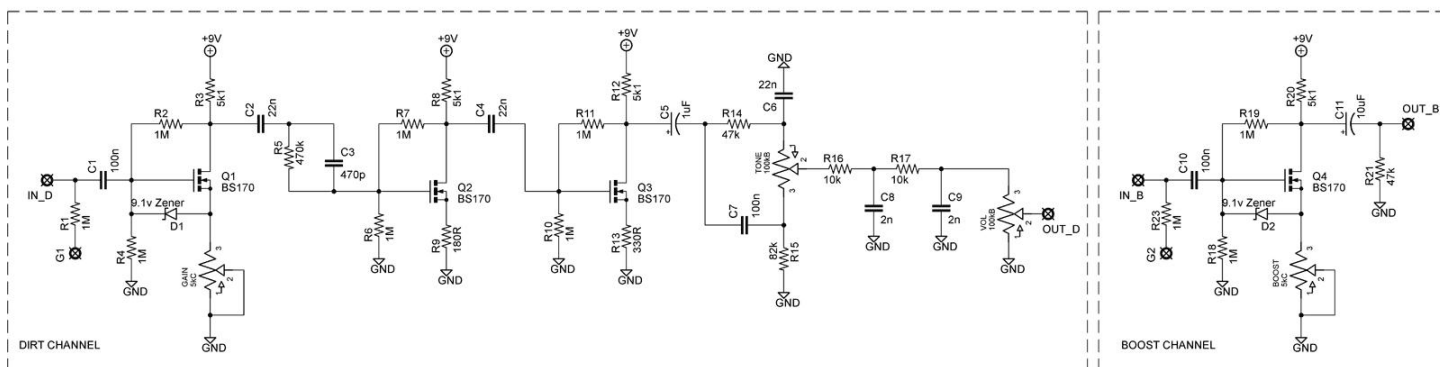
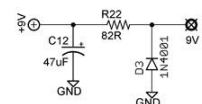
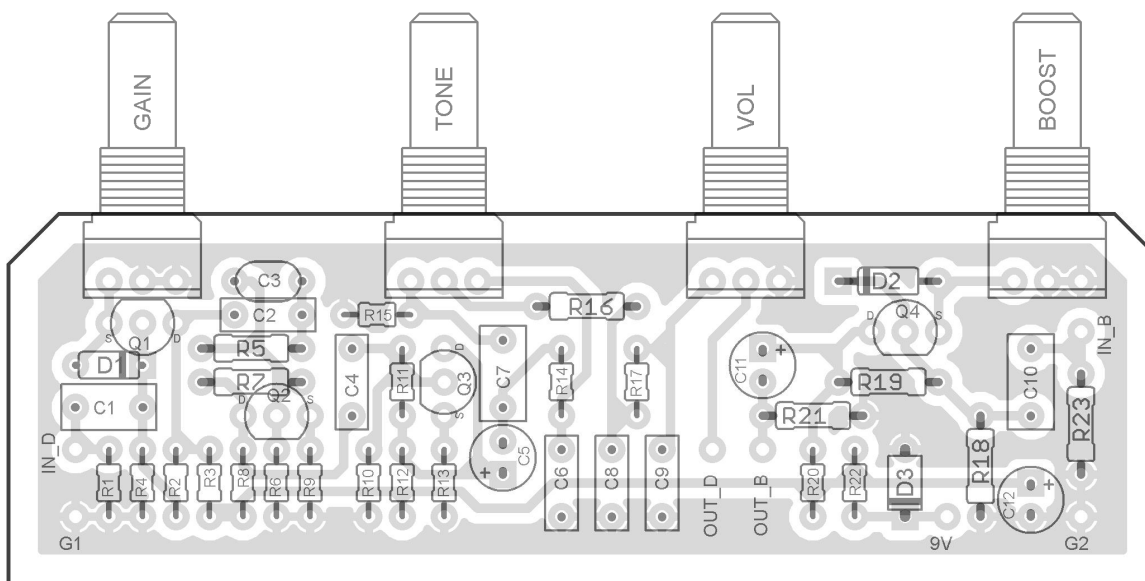
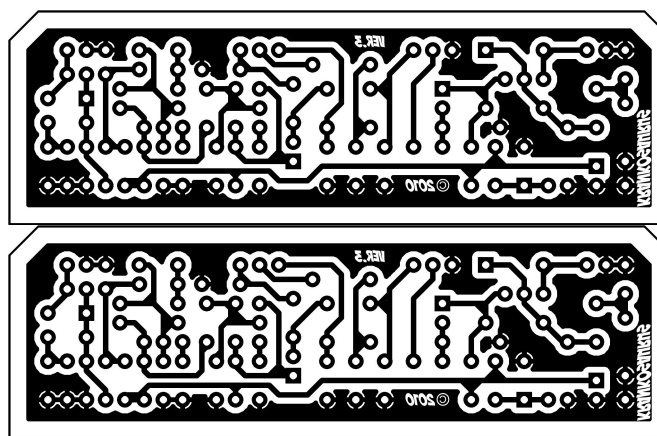


KRANKOSAURUS

PCB artwork ©2010 madbeanpedals
Ver.3 04.18.10

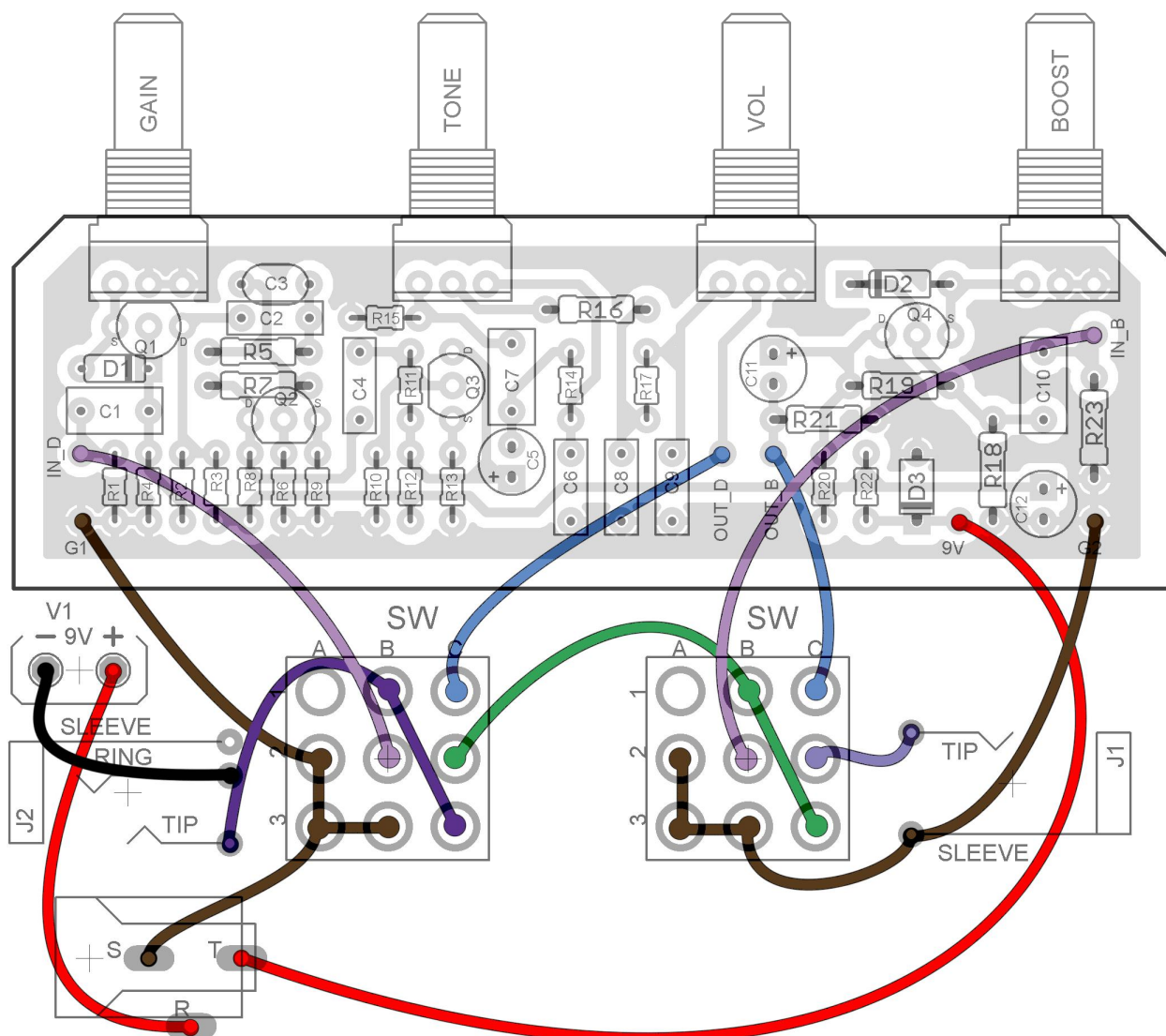


R1	1M	C1	100n
R2	1M	C2	22n
R3	5k1	C3	470p
R4	1M	C4	22n
R5	470k	C5	1uF
R6	1M	C6	22n
R7	1M	C7	100n
R8	5k1	C8	2n
R9	180R	C9	2n
R10	1M	C10	100n
R11	1M	C11	10uF
R12	5k1	C12	47uF
R13	330R		
R14	47k	D1, D2	9.1v Zener
R15	82k	D3	1N4001
R16	10k		
R17	10k	Q1 - Q4	BS170
R18	1M		
R19	1M	TONE	100kB
R20	5k1	VOL	100kB
R21	47k	GAIN	5kC
R22	82R	BOOST	5kC
R23	1M		

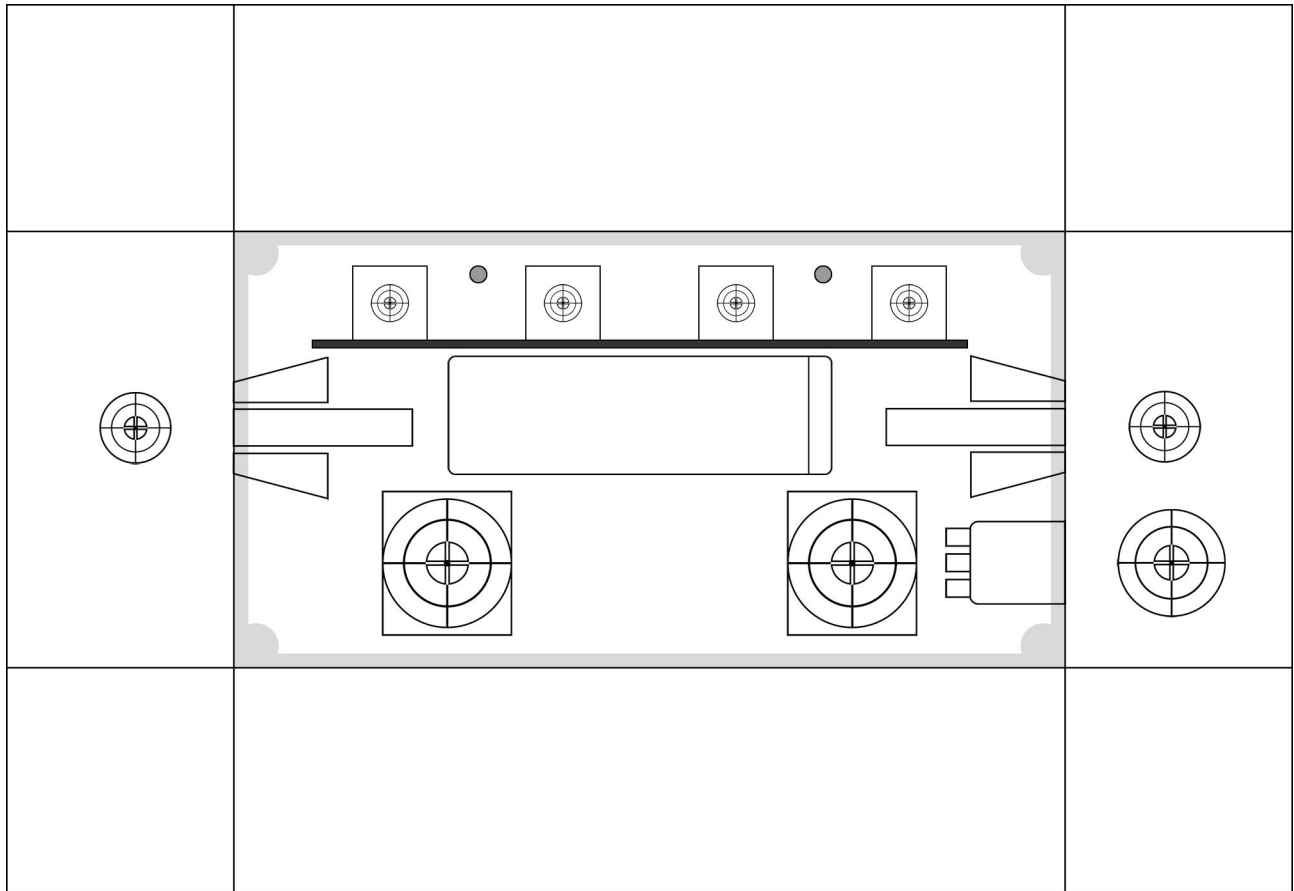


Notes

- The Dirt and Boost parts of the effect can be run either in series or independently (when using the provided wiring diagram). Note that you can use other types of 3PDT wiring.
- You can sub 2n2 for **C8** and **C9**.
- LED wiring not shown.



1590B/1290NS Enclosure



This drilling template is provided "as is". Use at your own risk!