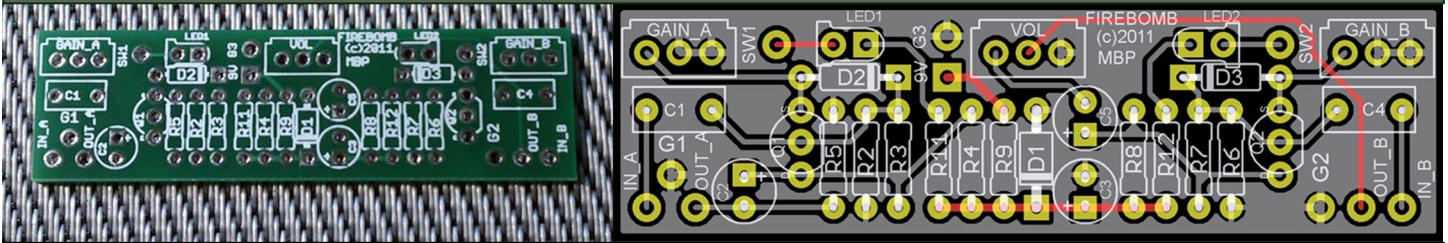


FIREBOMB



FX TYPE: DUAL BOOSTER

PCB artwork ©2011 madbeanpedals
Release date: 04.17.11

The **Firebomb** is a dual channel version of the Slambox. It is a two channel boost comprised of two independent mosfet gain stages. The second channel has a master volume control so you can control its output when using one or both channels. The effect features very high input impedance, low output impedance and around 25db of gain per channel.

Controls

GAIN_A, GAIN_B: Sets the amount of boost for each channel.

VOL: Acts as a master volume control for channel B.

Build Notes

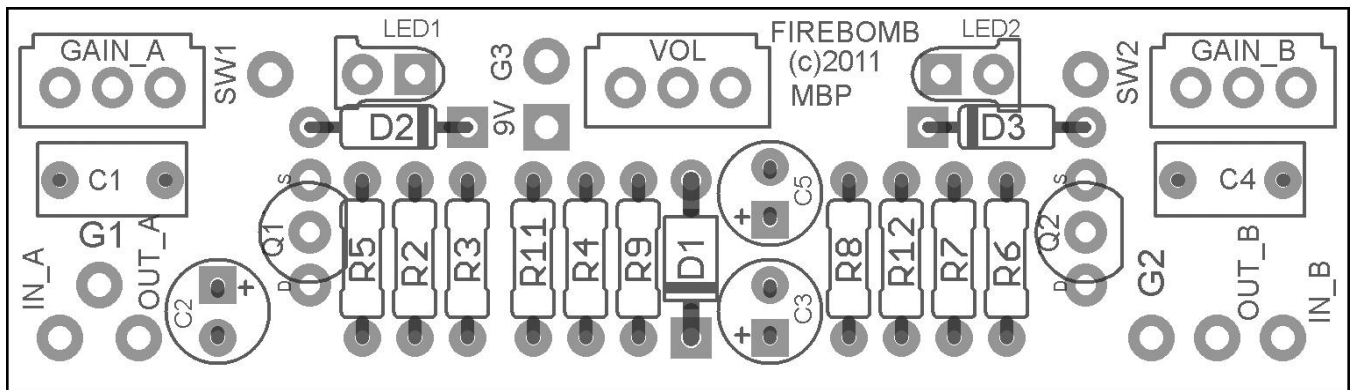
You can use regular 16mm pots if you wish to wire them off-board, or you can also use 9mm Alpha pots mounted directly to the PCB. The correct PCB mounted pots can be purchased here:

<http://www.smallbearelec.com/Detail.bok?no=693>

The **Firebomb** has a HUGE amount of boost on tap. Use caution when adjusting the gain controls so that you do not damage your amplifier by pushing it too hard.

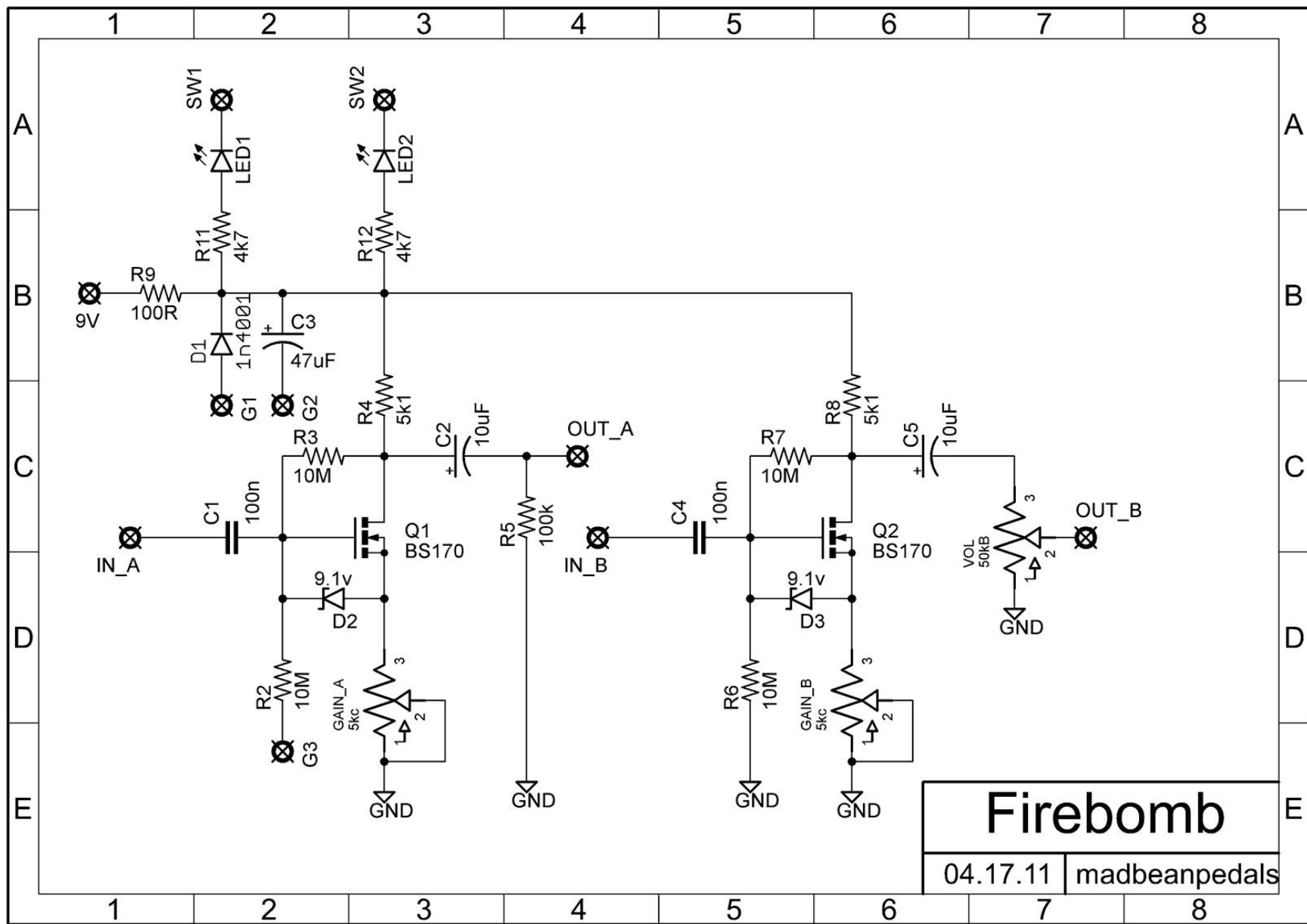
LAYOUT DIAGRAM

This PCB will fit in a 1590B enclosure (horizontal orientation)
2.55"W x .725"H



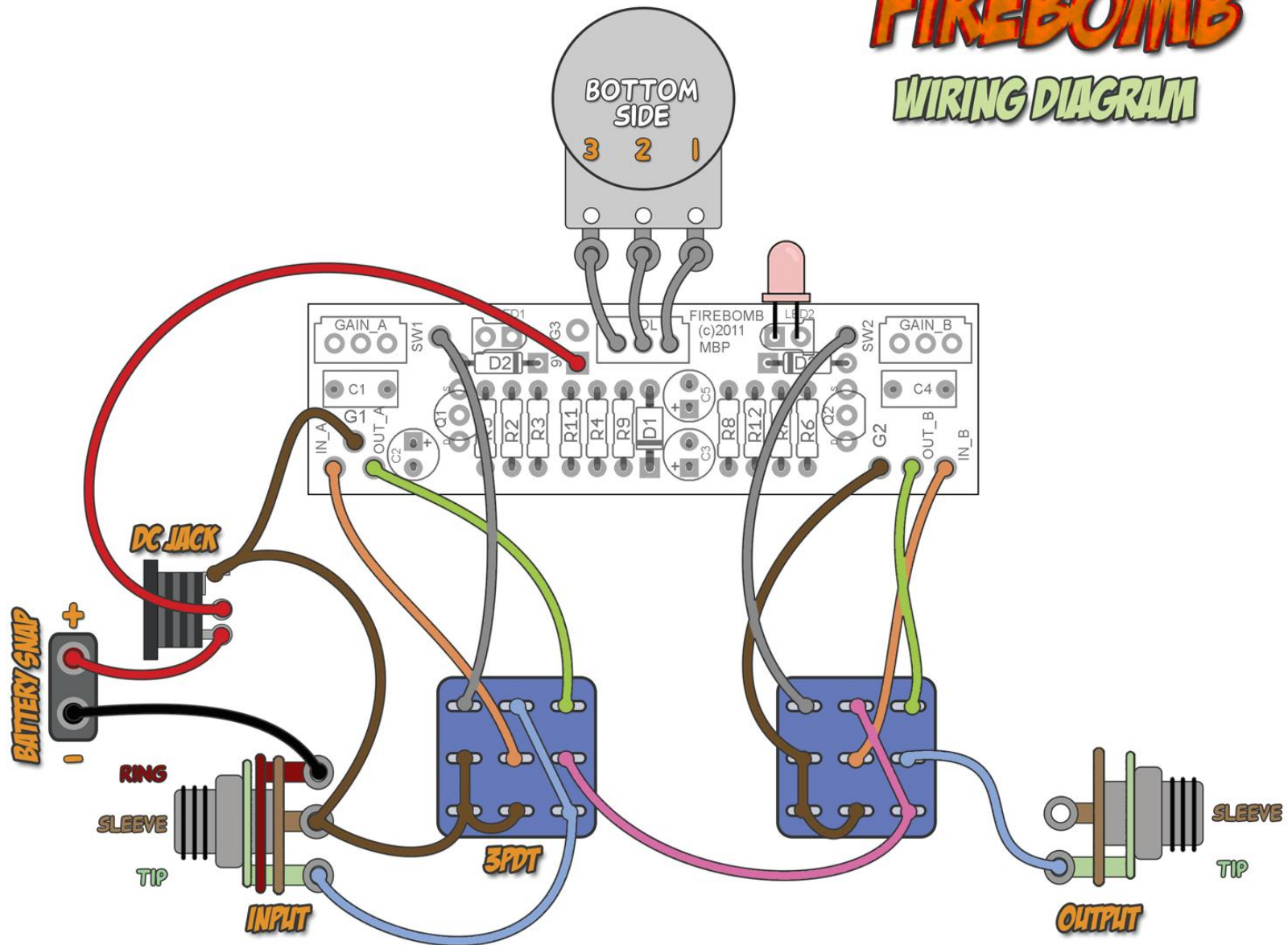
BILL OF MATERIALS

Resistors		Caps		Diodes	
R2	10M	C1	100n	D1	1n4001
R3	10M	C2	10uF	D2, D3	9.1v zener
R4	5k1	C3	47uF	Transistors	
R5	100k	C4	100n	Q1, Q2	BS170
R6	10M	C5	10uF	Pots	
R7	10M			VOL	50kB
R8	5k1			GAIN_A, B	5kC
R9	100R				
R11	4k7				
R12	4k7				

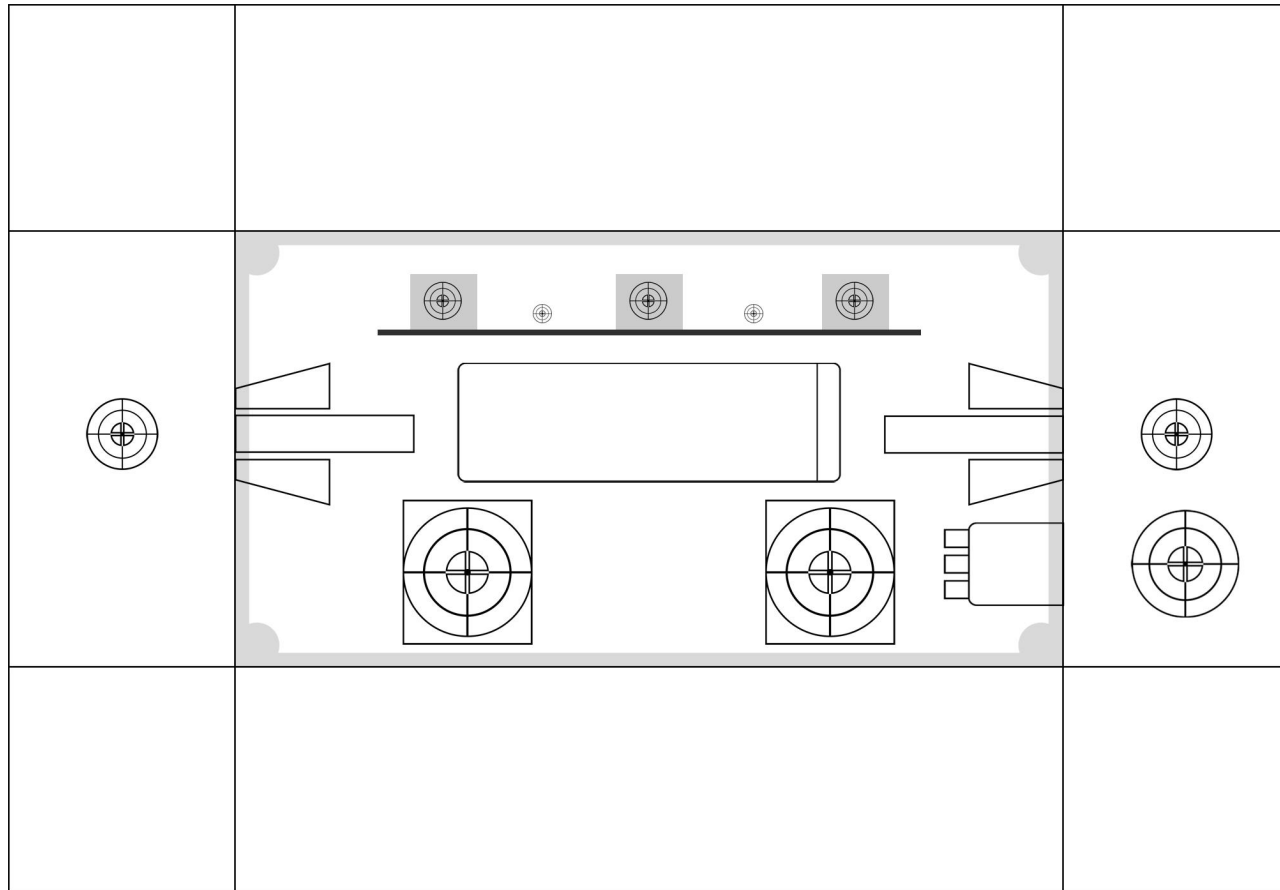


FIREBOMB

WIRING DIAGRAM

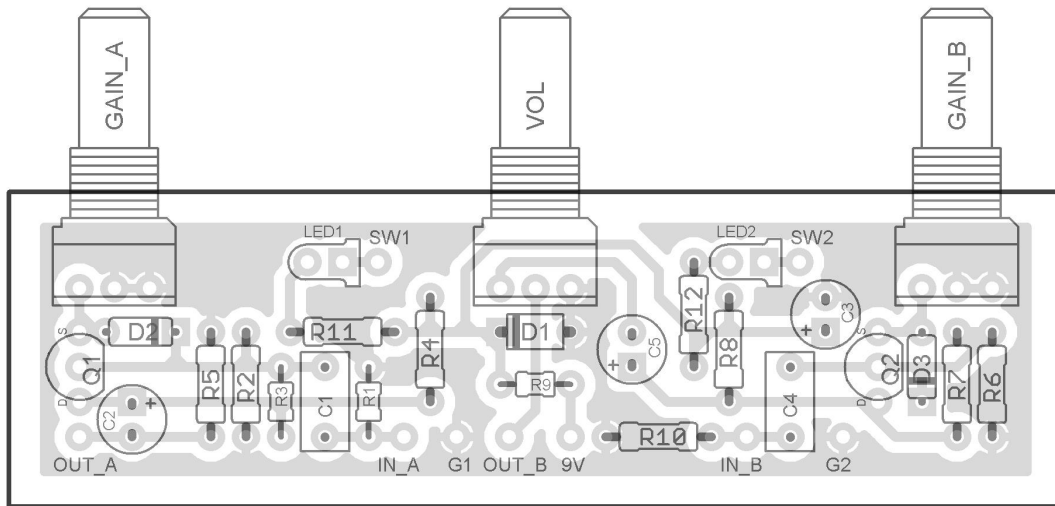


Drilling guide for manufactured PCB
4.63"H x 6.67"W

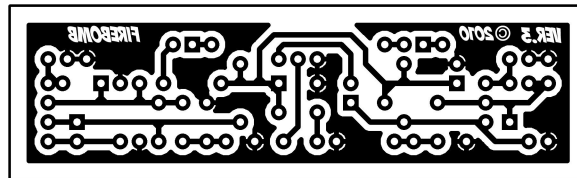


SINGLE SIDED VERSION FOR ETCHING

(square and round LED pads are reversed on this version)



3.02"W x 0.92"H (including borders)



Terms of Use



The madbeanpedals effects projects and PCB products are available for non-commercial use to all DIY enthusiasts, hobby builders and pedal makers. They are not intended, nor should they be used, for commercial manufacturing. This means that the PCBs and information in the project documents should not be utilized in the context of professional pedal making. However, building the projects for yourself or your friends or making the occasional “one-off” for sale is entirely permissible. The sale of PCBs or kits using the included PCB artwork is strictly prohibited, however.

Please keep in mind that some of the madbeanpedals projects are based upon currently manufactured pedals. Using the projects or PCBs to make cheap knock-off pedal clones for sale on eBay is not only not cool, but potentially hazardous to your karma. While the vast majority of guitar effects circuits are not patented, many pedal manufacturers do hold trademarks over their products. Any attempt to infringe on a manufacturer’s trademark could be met with legal challenges, and madbeanpedals offers no warranty or guarantee against this, should you do so.

build.share.learn.