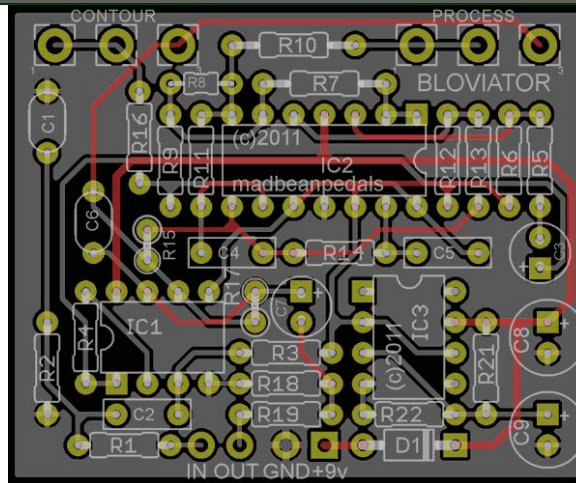


BLOVIATOR



FX Type: FILTER

PCB artwork ©2011 madbeanpedals

Release date: 06.01.11

The **Bloviator** is based on the venerated BBE Sonic Maximizer, as it was re-tooled in Bajaman's Sonic Stump pedal version. It is based around a "state variable" filter and is used to enhance your tone by adding presence, clarity and punch. It can also be used to transform an uninspired or weak guitar tone into something much more alive and dynamic.

Controls

CONTOUR: This adds up to 12dB of processed signal centered around 50Hz.

PROCESS: This adds up to 12dB of processed signal centered around 10kHz.

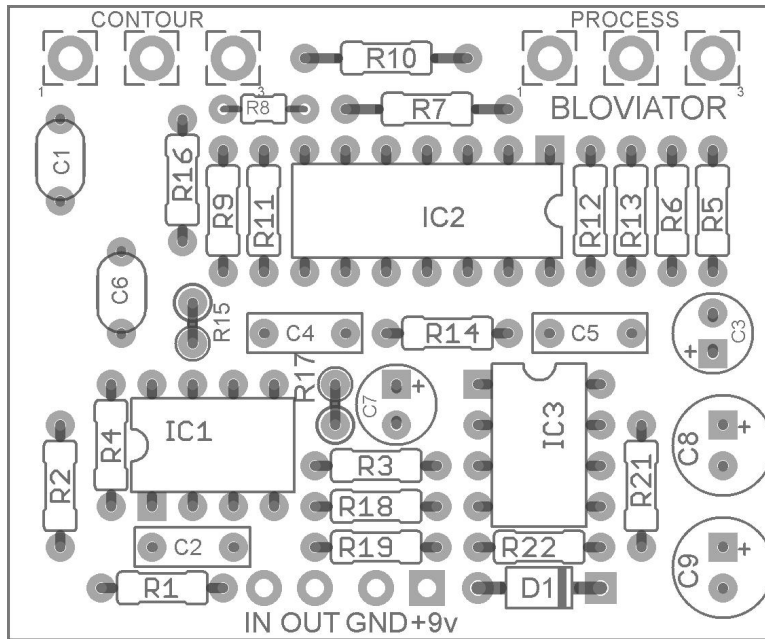
Build Notes

You can sub 1N4001 for D1 without issue.

You may also use PCB-mounted 16mm pots for this PCB: <http://www.smallbearelec.com/Detail.bok?no=692>

LAYOUT DIAGRAM

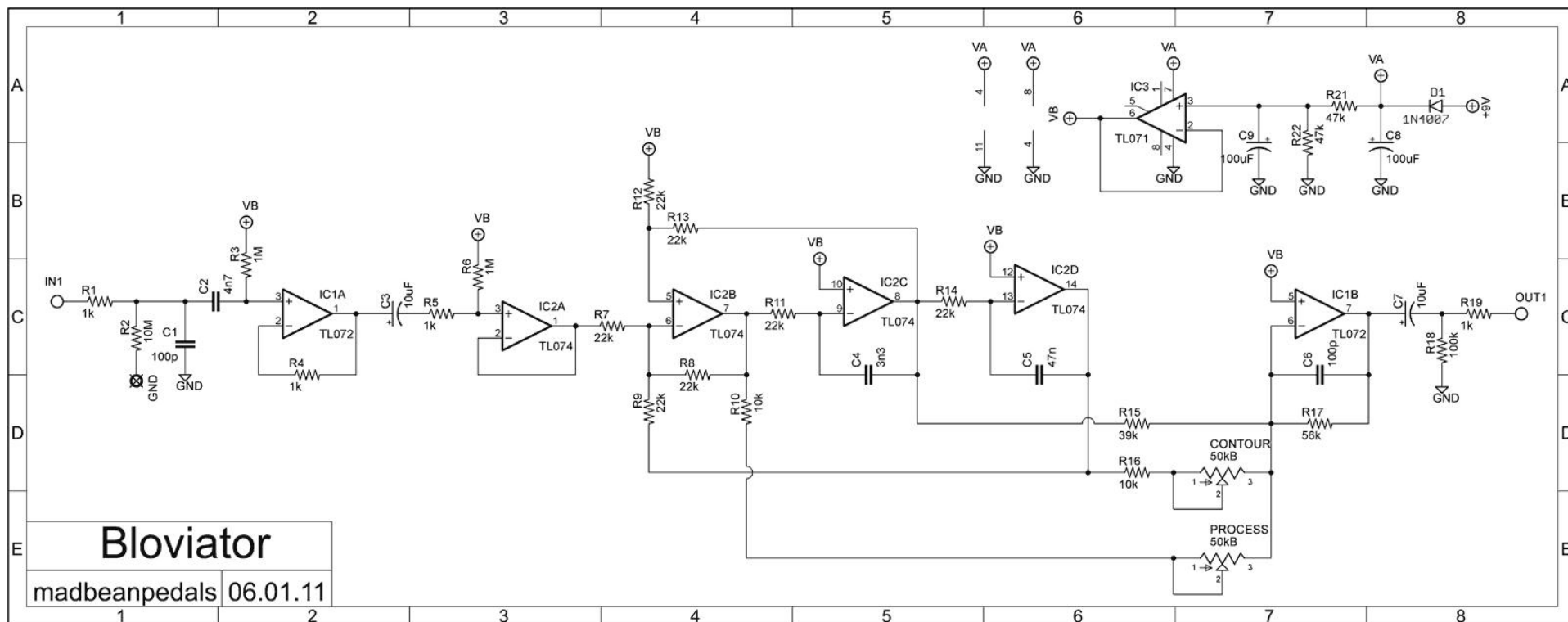
1.875" W x 1.55" H



This PCB will fit in a 1590B

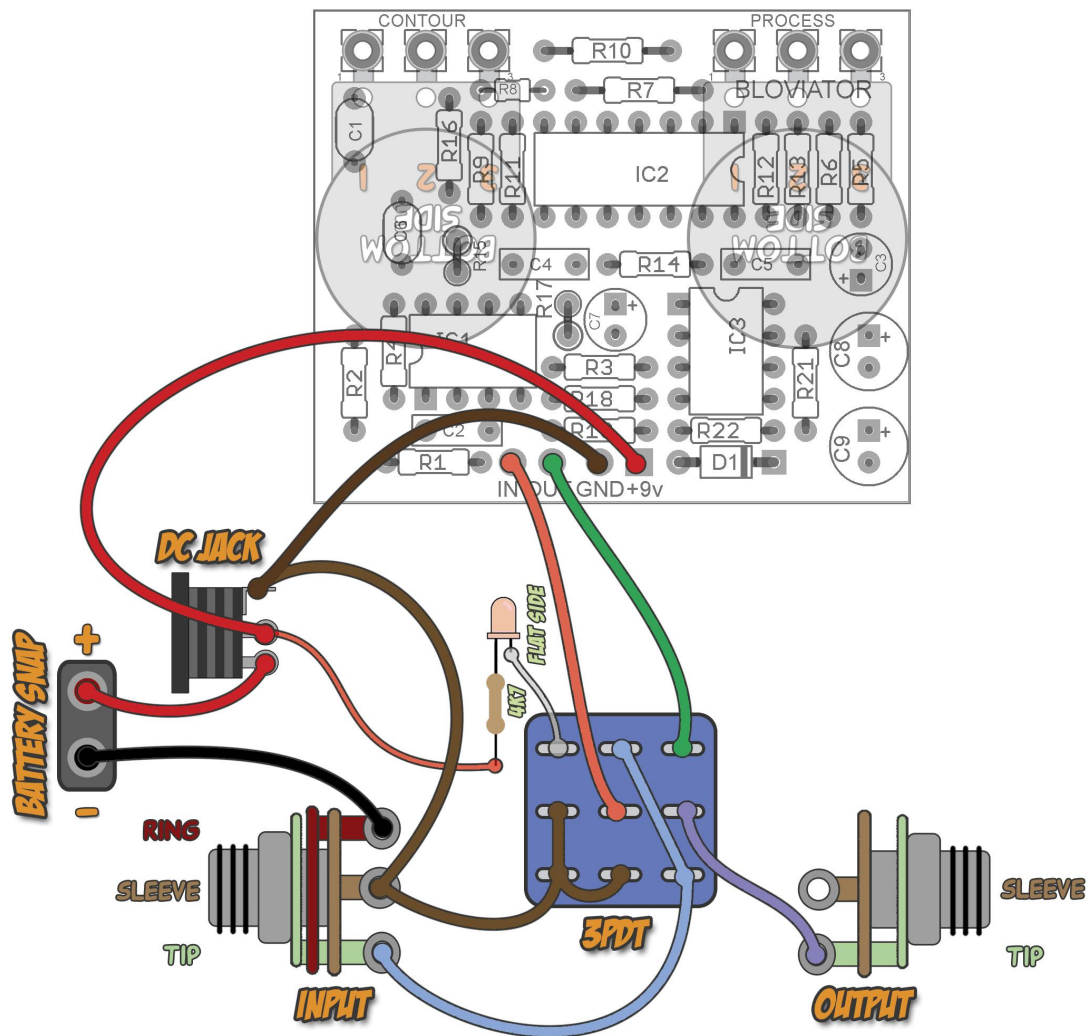
BILL OF MATERIALS

Resistors		Resistors		Caps		Diodes	
R1	1k	R10	10k	C1	100p	D1	1N4007
R2	10M	R11	22k	C2	4n7	IC	
R3	1M	R12	22k	C3	10uF	IC1	TL072
R4	1k	R13	22k	C4	3n3	IC2	TL074
R5	1k	R14	22k	C5	47n	IC3	TL071
R6	1M	R15	39k	C6	100p	Pots	
R7	22k	R16	10k	C7	10uF	CONTOUR	50kB
R8	22k	R17	56k	C8	100uF	PROCESS	50kB
R9	22k	R18	100k	C9	100uF		
		R19	1k				
		R21	47k				
		R22	47k				

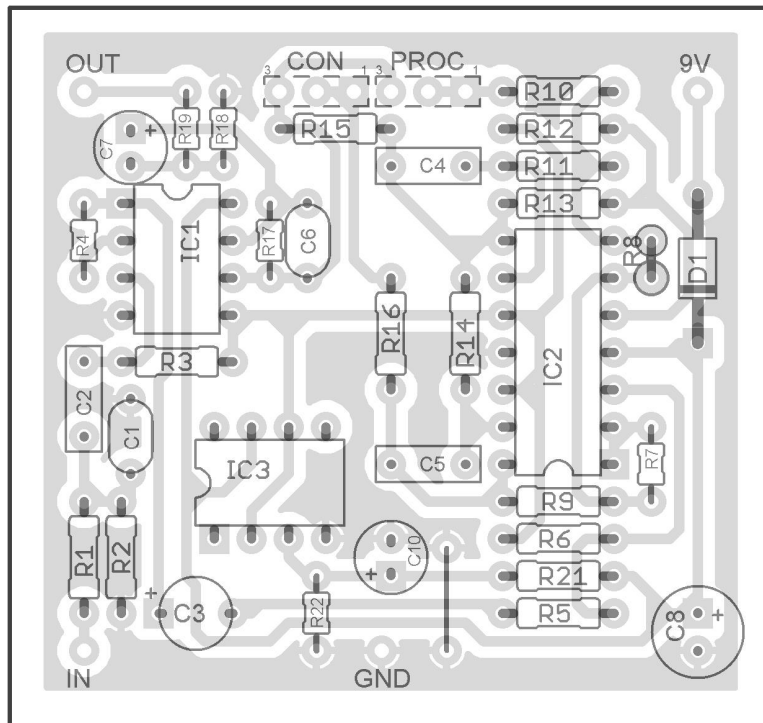


BLOVIATOR

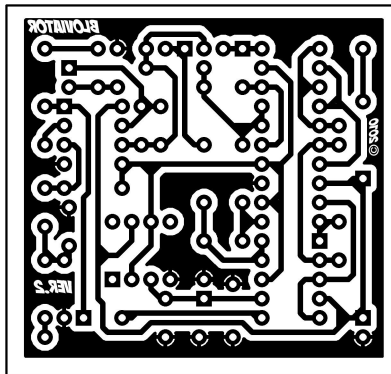
WIRING DIAGRAM



SINGLE SIDED VERSION



2.07" W x 1.93" H with borders



Terms of Use



The madbeanpedals effects projects and PCB products are available for non-commercial use to all DIY enthusiasts, hobby builders and pedal makers. They are not intended, nor should they be used, for commercial manufacturing. This means that the PCBs and information in the project documents should not be utilized in the context of professional pedal making. However, building the projects for yourself or your friends or making the occasional “one-off” for sale is entirely permissible. The sale of PCBs or kits using the included PCB artwork is strictly prohibited, however.

Please keep in mind that some of the madbeanpedals projects are based upon currently manufactured pedals. Using the projects or PCBs to make cheap knock-off pedal clones for sale on eBay is not only not cool, but potentially hazardous to your karma. While the vast majority of guitar effects circuits are not patented, many pedal manufacturers do hold trademarks over their products. Any attempt to infringe on a manufacturer’s trademark could be met with legal challenges, and madbeanpedals offers no warranty or guarantee against this, should you do so.

build.share.learn.