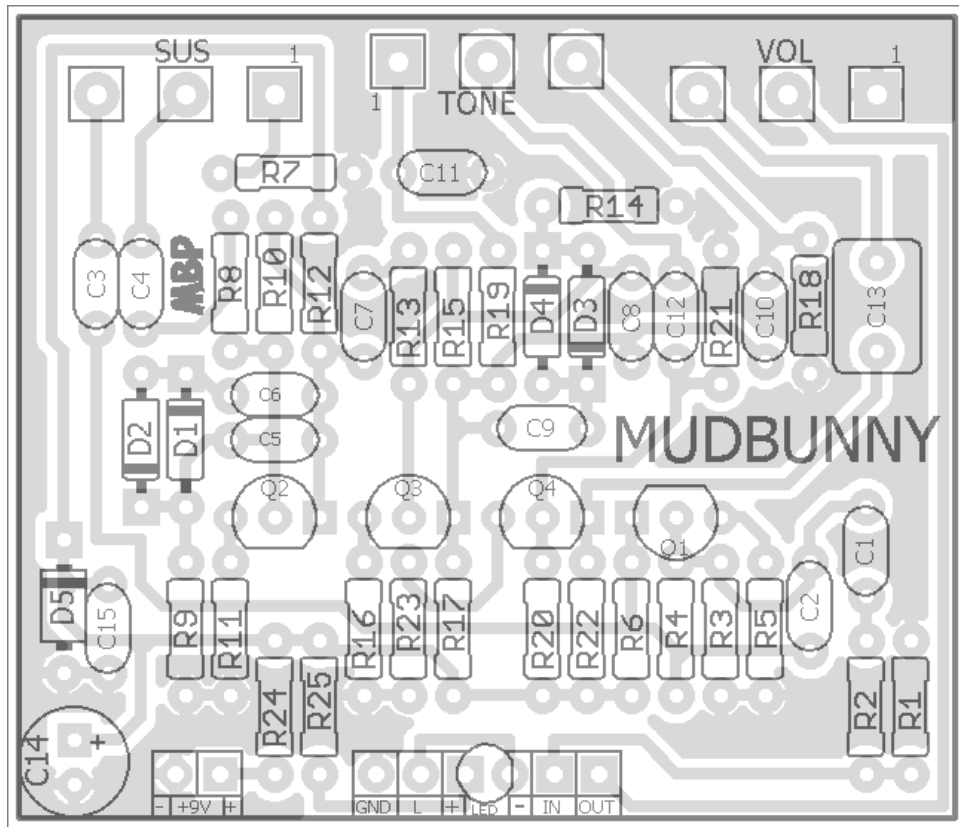


MUDBUNNY

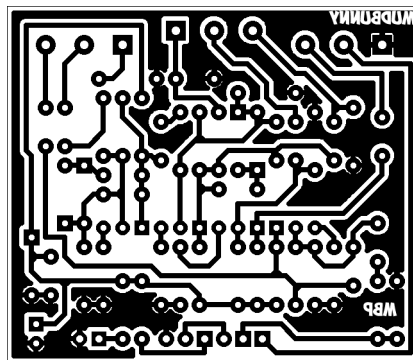
FX TYPE: Distortion

Based on the EHX® Big Muff Pi™

© 2017 madbeanpedals



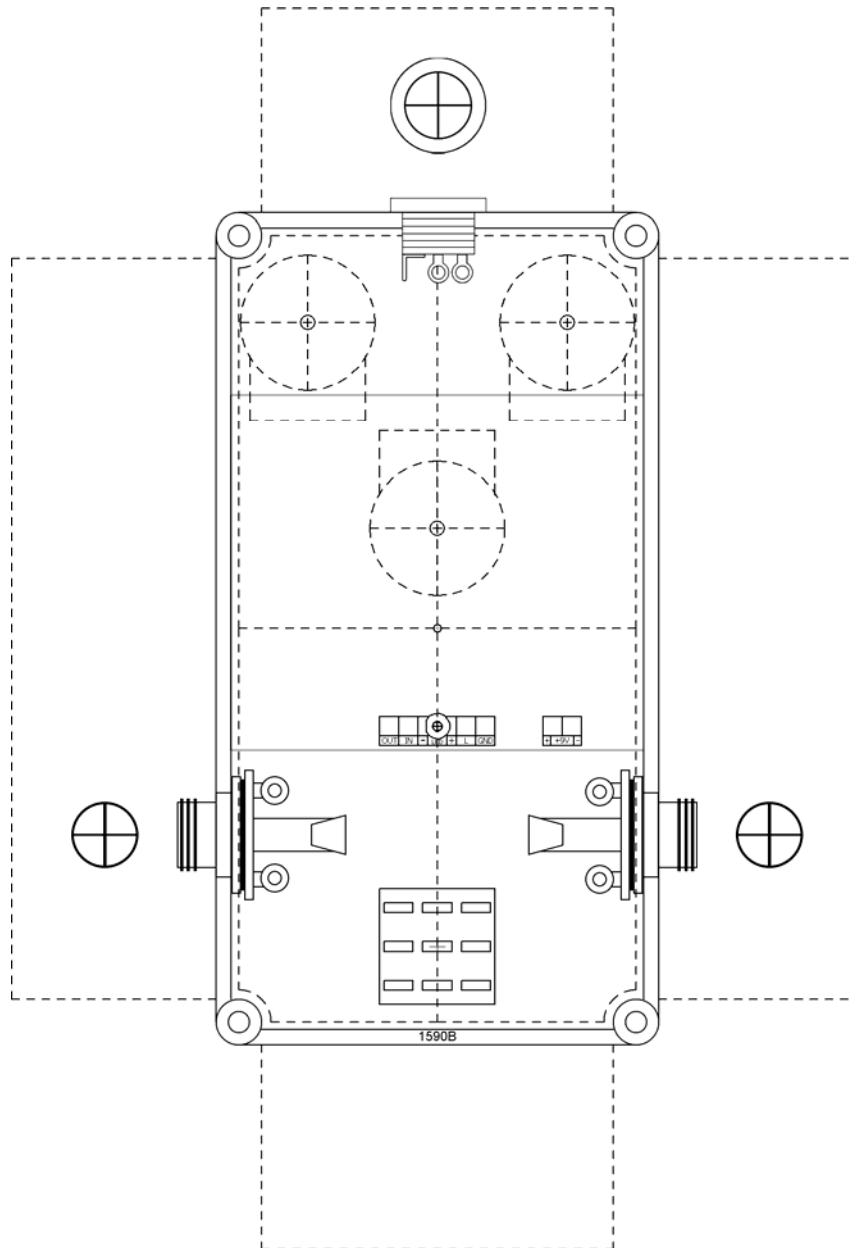
2.15" W x 1.85" H



Etcher's Paradise projects are intended for DIY use only! Commercial pedal manufacturing using these materials is strictly forbidden.

1590B Drill Guide

4.43"W x 6.46"H



Triangle					
Resistors		Caps		Diodes	
R1	1M	C1	100n	D1 - D4	1n914
R2	3K3	C2	omit	D5	1N4001
R3	82K	C3	100n	Transistors	
R4	390K	C4	100n	Q1 - Q4	2n5088
R5	820R	C5	560p	Pots	
R6	22K	C6	50n	SUS	100kB
R7	1K	C7	100n	TONE	100kB
R8	8K2	C8	560p	VOL	100kA
R9	omit	C9	50n		
R10	390K	C10	4n		
R11	150R	C11	10n		
R12	12K	C12	100n		
R13	8K2	C13	100n		
R14	82K	C14	100uF		
R15	390K	C15	100n		
R16	820R				
R17	22K				
R18	39K				
R19	39K				
R20	390K				
R21	100K				
R22	12K				
R23	2K7				
R24	100R				
R25	4k7				

Violet Ram's Head					
Resistors		Caps		Diodes	
R1	1M	C1	100n	D1 - D4	1n914
R2	39K	C2	470p	D5	1N4001
R3	100K	C3	100n	Transistors	
R4	470K	C4	100n	Q1 - Q4	2n5088
R5	100R	C5	470p	Pots	
R6	15K	C6	100n	SUS	100kB
R7	1K	C7	100n	TONE	100kB
R8	8K2	C8	470p	VOL	100kA
R9	100K	C9	100n		
R10	470K	C10	4n		
R11	100R	C11	10n		
R12	10K	C12	100n		
R13	8K2	C13	100n		
R14	100K	C14	100uF		
R15	470K	C15	100n		
R16	100R				
R17	15K				
R18	39K				
R19	39K				
R20	390K				
R21	100K				
R22	10K				
R23	2K7				
R24	100R				
R25	4k7				

Green Russian					
Resistors		Caps		Diodes	
R1	1M	C1	100n	D1 - D4	1n914
R2	39K	C2	470p	D5	1N4001
R3	100K	C3	100n	Transistors	
R4	470K	C4	100n	Q1 - Q4	2n5088
R5	390R	C5	470p	Pots	
R6	12K	C6	47n	SUS	100kB
R7	1K	C7	100n	TONE	100kB
R8	10K	C8	470p	VOL	100kA
R9	100K	C9	47n		
R10	470K	C10	3n9		
R11	390R	C11	10n		
R12	12K	C12	100n		
R13	10K	C13	100n		
R14	100K	C14	100uF		
R15	470K	C15	100n		
R16	390R				
R17	12K				
R18	22K				
R19	20K				
R20	470K				
R21	100K				
R22	10K				
R23	2K				
R24	100R				
R25	4k7				

Civil War					
Resistors		Caps		Diodes	
R1	1M	C1	100n	D1 - D4	1n914
R2	39K	C2	430p	D5	1N4001
R3	100K	C3	100n	Transistors	
R4	470K	C4	100n	Q1 - Q4	2n5088
R5	390R	C5	430p	Pots	
R6	12K	C6	47n	SUS	100kB
R7	1K	C7	100n	TONE	100kB
R8	10K	C8	430p	VOL	100kA
R9	100K	C9	47n		
R10	470K	C10	3n9		
R11	390R	C11	10n		
R12	12K	C12	100n		
R13	10K	C13	100n		
R14	100K	C14	100uF		
R15	470K	C15	100n		
R16	390R				
R17	12K				
R18	22K				
R19	20K				
R20	470K				
R21	100K				
R22	10K				
R23	2K7				
R24	100R				
R25	4k7				

Mayo					
Resistors		Caps		Diodes	
R1	1M	C1	100n	D1 - D4	1n914
R2	33k	C2	500pF	D5	1N4001
R3	100k	C3	100n	Transistors	
R4	470k	C4	100n	Q1 - Q4	BC550
R5	100R	C5	500pF	Pots	
R6	18k	C6	100n	SUS	100kB
R7	820R	C7	100n	TONE	100kB
R8	8k2	C8	500pF	VOL	100kA
R9	100k	C9	100n		
R10	470k	C10	4n		
R11	100R	C11	10n		
R12	10k	C12	100n		
R13	8k2	C13	100n		
R14	100k	C14	100uF		
R15	470k	C15	100n		
R16	100R				
R17	18k				
R18	33k				
R19	33k				
R20	390k				
R21	100k				
R22	10k				
R23	2k7				
R24	100R				
R25	4k7				

Creamy Dreamer					
Resistors		Caps		Diodes	
R1	1M	C1	100n	D1 - D4	1n914
R2	33k	C2	560pF	D5	1N4001
R3	82k	C3	100n	Transistors	
R4	470k	C4	100n	Q1 - Q4	2n5088
R5	jumper	C5	560pF	Pots	
R6	22k	C6	50n	SUS	100kB
R7	1k	C7	100n	TONE	100kB
R8	15k	C8	560pF	VOL	100kA
R9	82k	C9	50n		
R10	470k	C10	4n		
R11	jumper	C11	10n		
R12	22k	C12	100n		
R13	15k	C13	100n		
R14	82k	C14	100uF		
R15	470k	C15	100n		
R16	jumper				
R17	22k				
R18	39k				
R19	39k				
R20	470k				
R21	100k				
R22	22k				
R23	2k2				
R24	100R				
R25	4k7				

