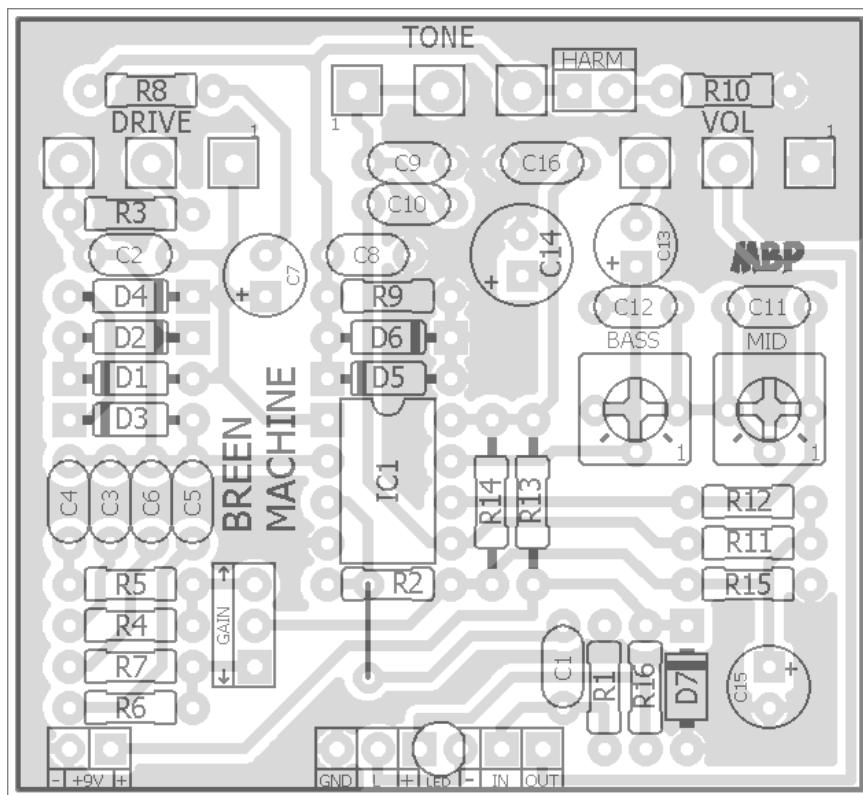


BREEN MACHINE

FX TYPE: Overdrive

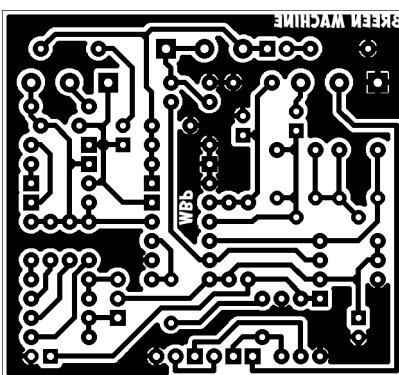
Based on the Barber® Compact Direct Drive™

© 2017 madbeanpedals



Note the jumper

2.1" W x 1.93" H



Etcher's Paradise projects are intended for DIY use only! Commercial pedal manufacturing using these materials is strictly forbidden.

B.O.M.					
Resistors		Caps		Diodes	
R1	1M	C1	22n	D1 - D6	1n4148
R2	470k	C2	100pF	D7	1N4001
R3	10k	C3	22n	IC	
R4	15k	C4	10n	IC1	Dual
R5	5k1	C5	100n	Switches	
R6	2k2	C6	82n	GAIN	SPDT
R7	2k4	C7	10uF	HARM	SPDT
R8	3k	C8	3n3	Trimmers	
R9	33k	C9	2n2	BASS	50k
R10	4k7	C10	22n	MID	20k
R11	470k	C11	10n	Pots	
R12	3k	C12	82n	DRIVE	1MA
R13	91R	C13	4u7	TONE	50kB
R14	10k	C14	100uF	VOL	100kA
R15	10k	C15	47uF		
R16	4k7	C16	100n		

Shopping List			
Value	QTY	Type	Rating
91R	1	Metal / Carbon Film	1/4 W
2k2	1	Metal / Carbon Film	1/4 W
2k4	1	Metal / Carbon Film	1/4 W
3k	2	Metal / Carbon Film	1/4 W
4k7	2	Metal / Carbon Film	1/4 W
5k1	1	Metal / Carbon Film	1/4 W
10k	3	Metal / Carbon Film	1/4 W
15k	1	Metal / Carbon Film	1/4 W
33k	1	Metal / Carbon Film	1/4 W
470k	2	Metal / Carbon Film	1/4 W
1M	1	Metal / Carbon Film	1/4 W
100pF	1	Ceramic / MLCC	16v min.
2n2	1	Film	16v min.
3n3	1	Film	16v min.
10n	2	Film	16v min.
22n	3	Film	16v min.
82n	2	Film	16v min.
100n	2	Film	16v min.
4u7	1	Electrolytic	16v min.
10uF	1	Electrolytic	16v min.
47uF	1	Electrolytic	16v min.
100uF	1	Electrolytic	16v min.
1n4148	6		
1N4001	1		
Dual	1	your choice dual op-amp	
SPDT	2	On/On	
50k	1	Bourns 3362p	
20k	1	Bourns 3362p	
1MA	1	PCB Pin Right Anlge	16mm
50kB	1	PCB Pin Right Anlge	16mm
100kA	1	PCB Pin Right Anlge	16mm

You can use 100R for R13

1590B Drill Guide

4.43" W x 6.46" H

