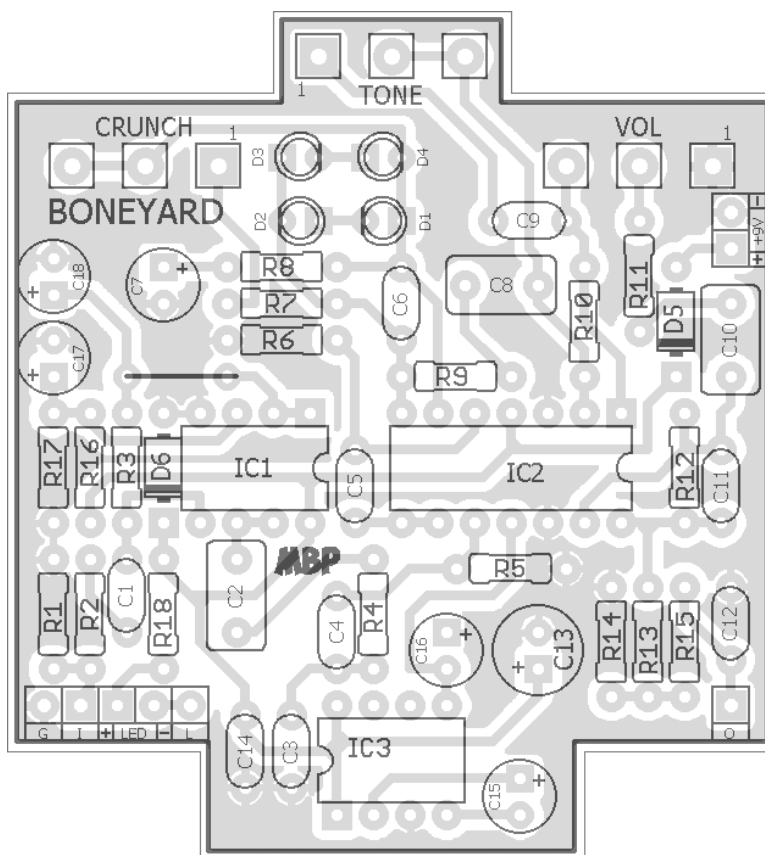
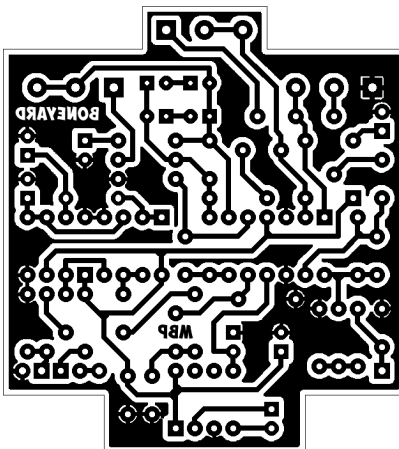


FX TYPE: Distortion

© 2016 madbeanpedals

2.1" W x 2.33" H



Etcher's Paradise projects are intended for DIY use only! Commercial pedal manufacturing using these materials is strictly forbidden.

B.O.M.					
Resistors		Caps		Diodes	
R1	1M	C1	100n	D1 - D4	LED
R2	10k	C2	470n	D5	1N5817
R3	1M	C3	330pF	D6	12v Zener
R4	1k	C4	220n	IC's	
R5	1M	C5	33n	IC1	TL072
R6	47k	C6	330pF	IC2	LF347
R7	2k	C7	2u2	IC3	TC1044SCPA
R8	47R	C8	470n	Pots	
R9	22k	C9	68n	TONE	5kB
R10	22k	C10	470n	VOL	5kA
R11	47k	C11	220pF	CRUNCH	100kA
R12	22k	C12	1n5		
R13	100R	C13	100uF		
R14	1k	C14	100n		
R15	10k	C15	10uF		
R16	10k	C16	10uF		
R17	10k	C17	10uF		
R18	4k7	C18	1uF		

Notes

Oscillation at high gain settings seems to be a frequent problem with this design. The added input buffer is reported to help with this. If you still get oscillation at the maximum gain setting, consider using a 50kA pot for the Gain instead (or put a 100k resistor across the existing 100kA pot). Also, this design runs at +/-12v instead of +/-15v.

Other mods: C11 increased to 220pF from the stock 22pF cap. Added the LP filter at the output to tame some treble.

For asymmetrical clipping, jumper either D2 or D4.

Shopping List			
Value	QTY	Type	Rating
47R	1	Metal Film	1/4W
100R	1	Metal Film	1/4W
1k	2	Metal Film	1/4W
2k	1	Metal Film	1/4W
4k7	1	Metal Film	1/4W
10k	4	Metal Film	1/4W
22k	3	Metal Film	1/4W
47k	2	Metal Film	1/4W
1M	3	Metal Film	1/4W
220pF	1	Ceramic	25v min
330pF	2	Ceramic	25v min
1n5	1	Film	25v min
33n	1	Film	25v min
68n	1	Film	25v min
100n	2	Film	25v min
220n	1	Film	25v min
470n	3	Film	25v min
1uF	1	Electrolytic	25v min
2u2	1	Electrolytic	25v min
10uF	3	Electrolytic	25v min
100uF	1	Electrolytic	25v min
LED	4	White/Clear	3mm or 5mm
1N5817	1		
12v Zener	1		
TL072	1		
LF347	1		
TC1044 SCPA	1	or, MAX1044 CPA	
5kB	1	PCB Right Angle	16mm
5kA	1	PCB Right Angle	16mm
100kA	1	PCB Right Angle	16mm

1590B Drill Guide

4.43"W x 6.47"H

