

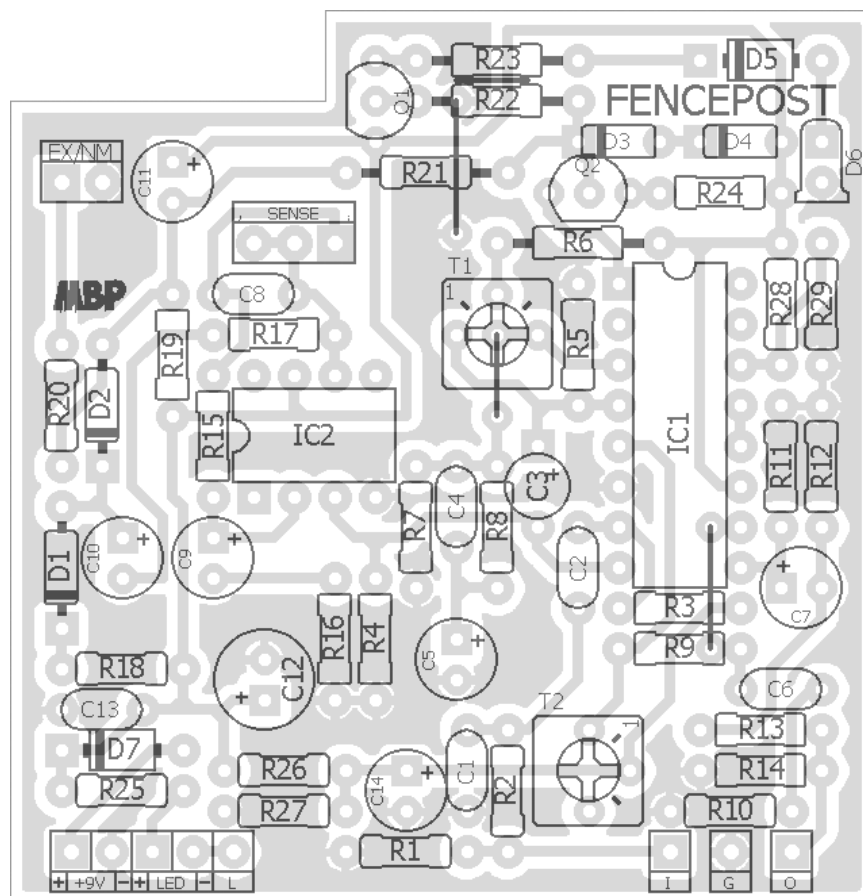
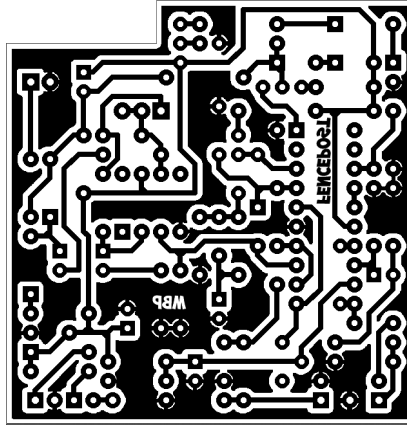
# FENCEPOST

FX TYPE: Noise Gate

Based on the ARMDNRDY Noise Gate

© 2016 madbeanpedals

2.13" W x 2.21" H



- Note the jumpers -

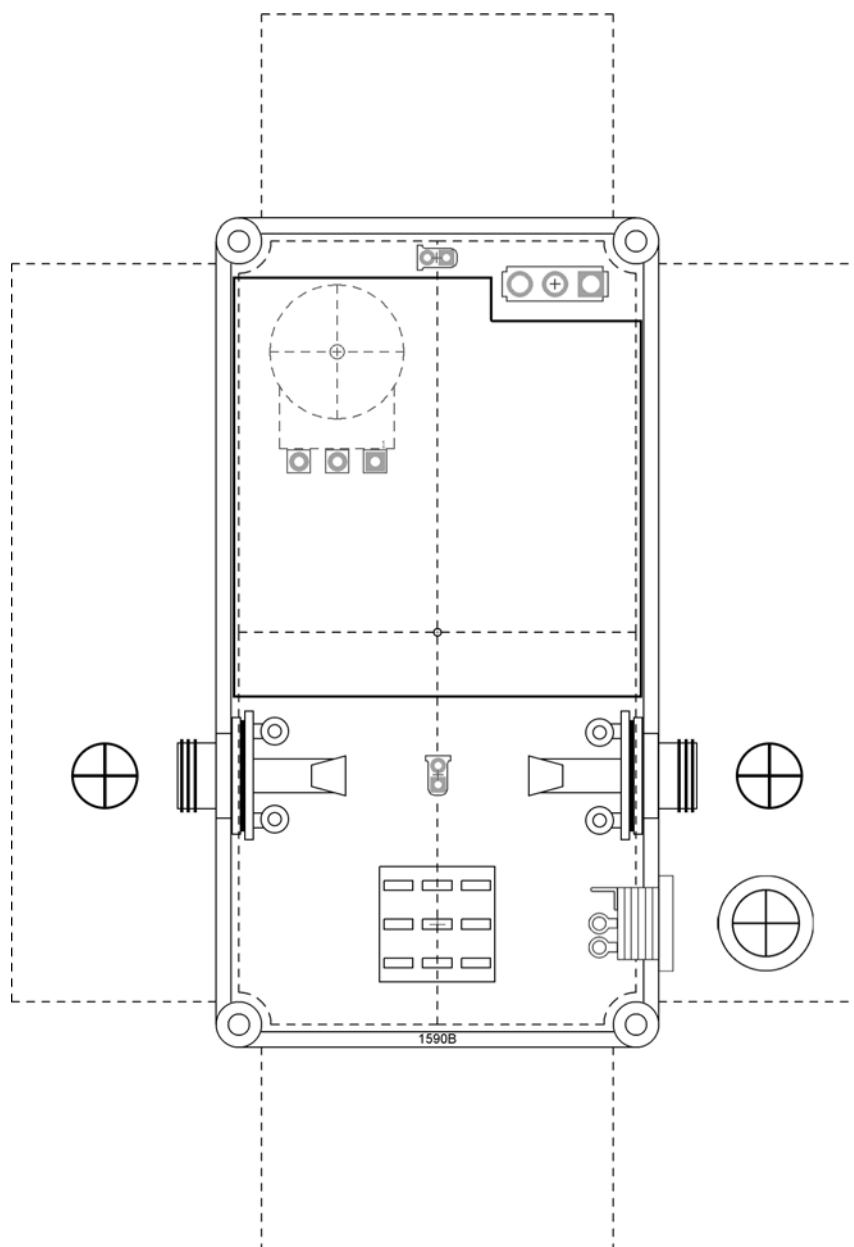
*Etcher's Paradise projects are intended for DIY use only! Commercial pedal manufacturing using these materials is strictly forbidden.*

B.O.M.					
Resistors		Caps		Diodes	
R1	1M	C1	47pF	D1 - D4	1n4148
R2	3k9	C2	100n	D5	1N4730
R3	510k	C3	3u3	D6	LED
R4	22k	C4	10n	D7	1N5817
R5	1M	C5	3u3	Transistors	
R6	470k	C6	10n	Q1, Q2	BC560
R7	1M	C7	3u3	IC's	
R8	15k	C8	100pF	IC1	LM13700
R9	13k	C9	3u3	IC2	TL061
R10	2k	C10	10uF	Switch	
R11	22k	C11	4u7	EX/NM	SPST
R12	200k	C12	100uF	Trimmers	
R13	680R	C13	100n	T1	2k
R14	1M	C14	10uF	T2	5k
R15	3k9			Pots	
R16	270R			SENSE	1MA
R17	470R				
R18	4k7				
R19	180k				
R20	47k				
R21	10k				
R22	100k				
R23	4k7				
R24	3k				
R25	4k7				
R26	100k				
R27	100k				
R28	10k				
R29	10k				

Shopping List			
Value	QTY	Type	Rating
270R	1	Metal/Carbon Film	1/4W
470R	1	Metal/Carbon Film	1/4W
680R	1	Metal/Carbon Film	1/4W
2k	1	Metal/Carbon Film	1/4W
3k	1	Metal/Carbon Film	1/4W
3k9	2	Metal/Carbon Film	1/4W
4k7	3	Metal/Carbon Film	1/4W
10k	3	Metal/Carbon Film	1/4W
13k	1	Metal/Carbon Film	1/4W
15k	1	Metal/Carbon Film	1/4W
22k	2	Metal/Carbon Film	1/4W
47k	1	Metal/Carbon Film	1/4W
100k	3	Metal/Carbon Film	1/4W
180k	1	Metal/Carbon Film	1/4W
200k	1	Metal/Carbon Film	1/4W
470k	1	Metal/Carbon Film	1/4W
510k	1	Metal/Carbon Film	1/4W
1M	4	Metal/Carbon Film	1/4W
47pF	1	Ceramic	16v min.
100pF	1	Ceramic	16v min.
10n	2	Film	16v min.
100n	2	Film	16v min.
3u3	4	Electrolytic	16v min.
4u7	1	Electrolytic	16v min.
10uF	2	Electrolytic	16v min.
100uF	1	Electrolytic	16v min.
1n4148	4		
1N4730	1		
LED	1	your choice	
1N5817	1		
BC560	2		
LM13700	1		
TL061	1		
SPST	1	or, SPDT	
2k	1	Bourns 3362P	
5k	1	Bourns 3362P	
1MA	1	Solder Lug	16mm

## 1590B Drill Guide

4.43"W x 6.46"H



Project reference: <http://www.diystompboxes.com/smfforum/index.php?topic=105397.0>

### Notes

- T1 adjusts effect balance.
- T2 adjusts effect output.
- LED indicates when the gate shuts on/off
- EX/NM switches between Expander and Normal modes.

