

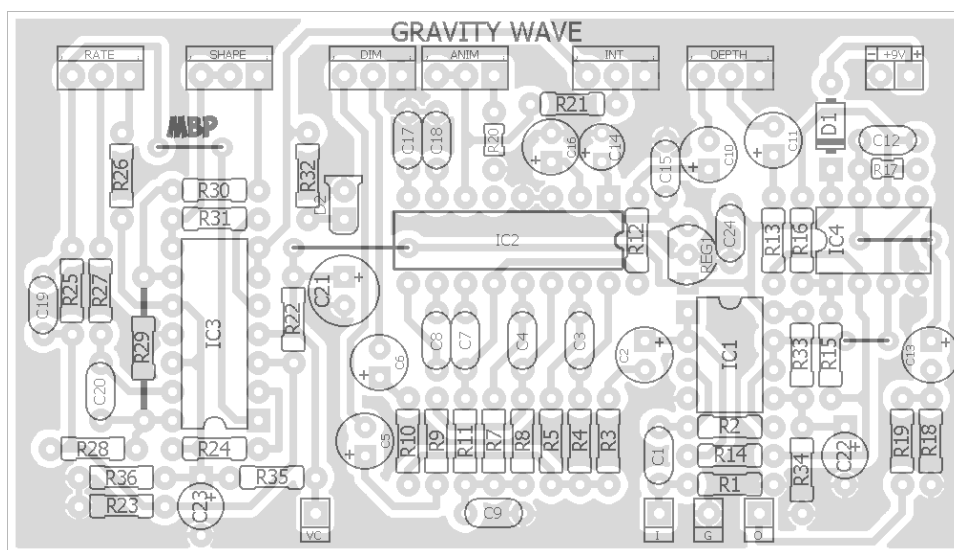
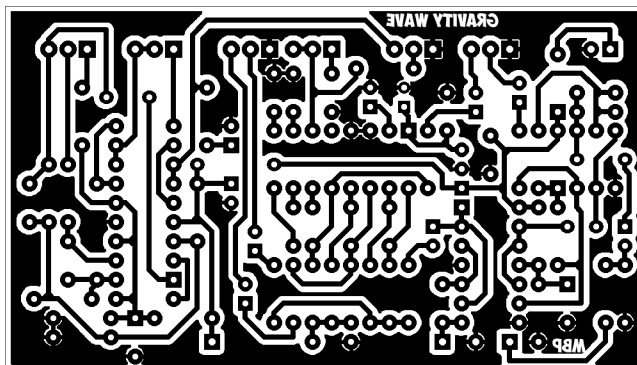
GRAVITY WAVE

FX TYPE: Modulation

Based on the EQD® Sea Machine™

© 2016 madbeanpedals

3.35" W x 1.9" H



- note the jumpers -

The VC pad is for connecting to a resistor and LED for your indicator.

Etcher's Paradise projects are intended for DIY use only! Commercial pedal manufacturing using these materials is strictly forbidden.

B.O.M.					
Resistors		Caps		Diodes	
R1	1M	C1	100n	D1	1N5817
R2	1M	C2	1uF	D2	LED
R3	10k	C3	470pF	IC's	
R4	33k	C4	470pF	IC1	TL072
R5	10k	C5	1uF	IC2	PT2399
R7	33k	C6	10uF	IC3	LM324
R8	33k	C7	100n	IC4	TL072
R9	1k	C8	100n	Regulator	
R10	8k2	C9	330n	REG1	LM78L05
R11	33k	C10	1uF	Pots	
R12	1k	C11	1uF	ANIM	2kB
R13	10k	C12	100pF	DIM	5kB
R14	10k	C13	1uF	DEPTH	25kB
R15	10k	C14	10uF	INT	50kB
R16	10k	C15	100n	SHAPE	100kA
R17	10k	C16	10uF	RATE	1MC
R18	100k	C17	100n		
R19	470R	C18	100n		
R20	2k2	C19	47n		
R21	22k	C20	470n		
R22	100k	C21	100uF		
R23	100k	C22	10uF		
R24	100k	C23	10uF		
R25	47k	C24	100n		
R26	10k				
R27	10k				
R28	10k				
R29	10k				
R30	10k				
R31	33k				
R32	1k				
R33	10k				
R34	10k				
R35	100k				
R36	100k				

Shopping List			
Value	QTY	Type	Rating
470R	1	Metal/Carbon Film	1/4W
1k	3	Metal/Carbon Film	1/4W
2k2	1	Metal/Carbon Film	1/4W
8k2	1	Metal/Carbon Film	1/4W
10k	14	Metal/Carbon Film	1/4W
22k	1	Metal/Carbon Film	1/4W
33k	5	Metal/Carbon Film	1/4W
47k	1	Metal/Carbon Film	1/4W
100k	6	Metal/Carbon Film	1/4W
1M	2	Metal/Carbon Film	1/4W
100pF	1	Ceramic	16v min.
470pF	2	Ceramic	16v min.
47n	1	Film	16v min.
100n	7	Film	16v min.
330n	1	Film	16v min.
470n	1	Film	16v min.
1uF	5	Electrolytic	16v min.
10uF	5	Electrolytic	16v min.
100uF	1	Electrolytic	16v min.
1N5817	1		
LED	1	your choice	
TL072	2		
PT2399	1		
LM324	1		
LM78L05	1		
2kB	1	Solder Lug	16mm
5kB	1	Solder Lug	16mm
25kB	1	Solder Lug	16mm
50kB	1	Solder Lug	16mm
100kA	1	Solder Lug	16mm
1MC	1	Solder Lug	16mm

1590BB Drill Guide

5.79"W x 6.82"H

