

# SEA URCHIN

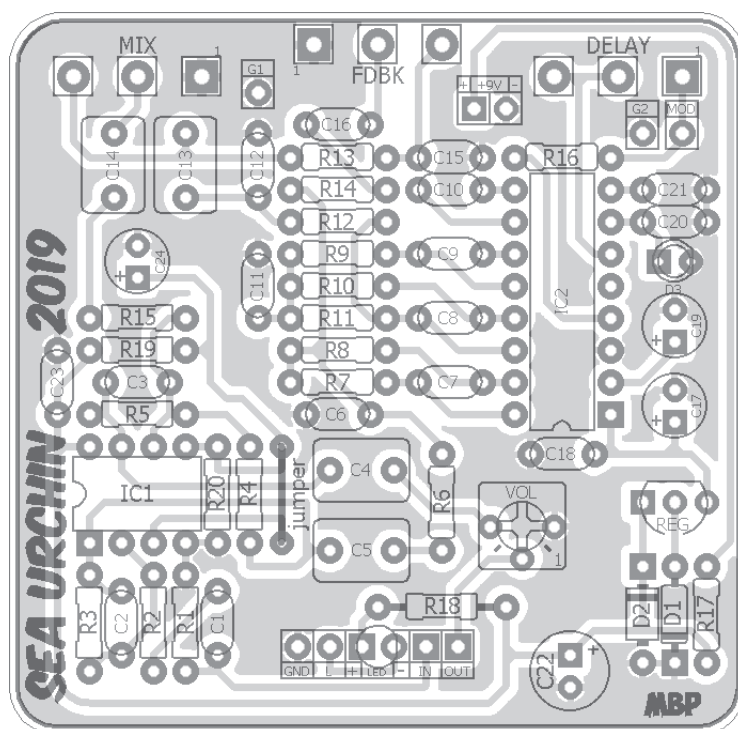
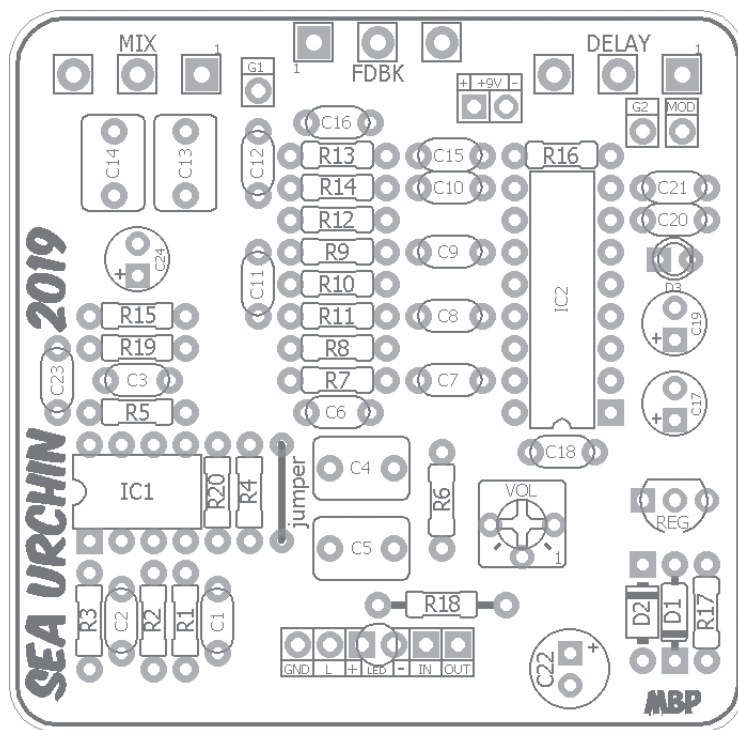
## FX TYPE: Delay

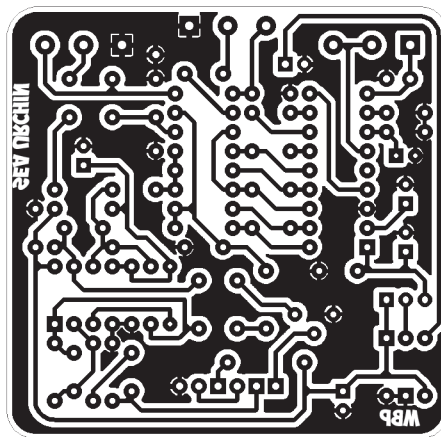
Based on the Mad Professor® Deep Blue Delay™

© 2019 [madbeanpedals](http://madbeanpedals.com)



**Terms of Use:** This material is intended for DIY use only.





Resistors		Caps		Diodes	
R1	1M	C1	22n	D1	1n914
R2	180k	C2	47pF	D2	1N4001
R3	360k	C3	100pF	D3	LED
R4	22k	C4	1uF	Regulator	
R5	12k	C5	1uF	REG	LM78L05
R6	10k	C6	4n7	IC	
R7	10k	C7	2n2	IC1	TL072
R8	10k	C8	2n2	IC2	PT2399
R9	10k	C9	100n	Trimmer	
R10	10k	C10	100n	VOL	100kB
R11	20k	C11	15n	Pots	
R12	1k	C12	10n	DELAY	50kB
R13	2k	C13	1uF	FDBK	50kB
R14	5k1	C14	1uF	MIX	50kB
R15	20k	C15	47n		
R16	2k7	C16	22n		
R17	33R	C17	10uF		
R18	4k7	C18	100n		
R19	10k	C19	47uF		
R20	10k	C20	100n		
		C21	100n		
		C22	100uF		
		C23	100n		
		C24	10uF		

Value	QTY	Type	Rating
33R	1	Carbon / Metal Film	1/4W
1k	1	Carbon / Metal Film	1/4W
2k	1	Carbon / Metal Film	1/4W
2k7	1	Carbon / Metal Film	1/4W
4k7	1	Carbon / Metal Film	1/4W
5k1	1	Carbon / Metal Film	1/4W
10k	7	Carbon / Metal Film	1/4W
12k	1	Carbon / Metal Film	1/4W
20k	2	Carbon / Metal Film	1/4W
22k	1	Carbon / Metal Film	1/4W
180k	1	Carbon / Metal Film	1/4W
360k	1	Carbon / Metal Film	1/4W
1M	1	Carbon / Metal Film	1/4W
47pF	1	Ceramic MLCC	16v min.
100pF	1	Ceramic MLCC	16v min.
2n2	2	Film	16v min.
4n7	1	Film	16v min.
10n	1	Film	16v min.
15n	1	Film	16v min.
22n	2	Film	16v min.
47n	1	Film	16v min.
100n	6	Film	16v min.
1uF	4	Film	16v min.
10uF	2	Electrolytic	16v min.
47uF	1	Electrolytic	16v min.
100uF	1	Electrolytic	16v min.
1n914	1		
1N4001	1		
LED	1	Yellow, Diffused	3mm
LM78L05	1		
TL072	1		
PT2399	1		
100kB	1	Bourns 3362p	
50kB	3	PC Mount, Right Angle	16mm

