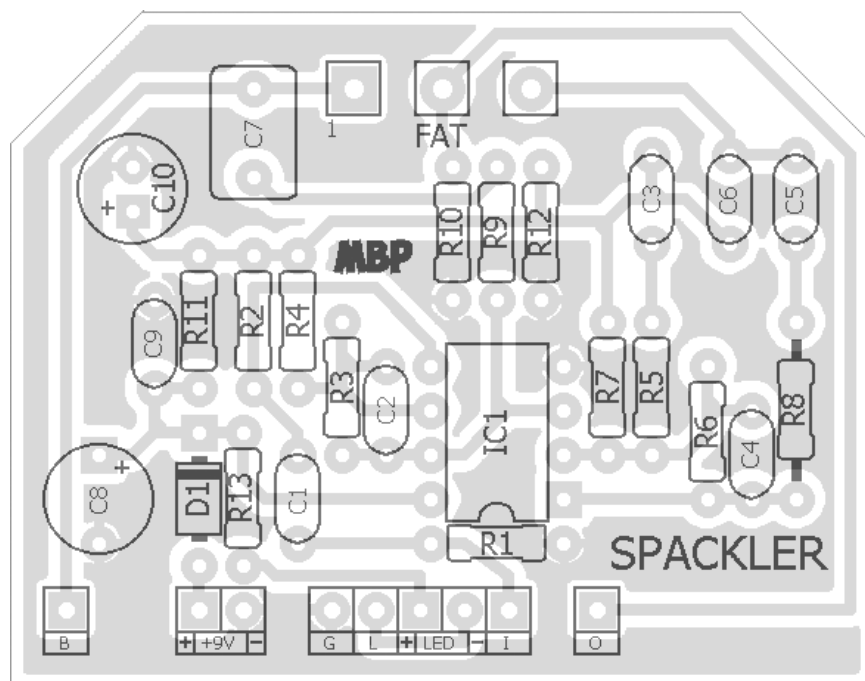


# SPACKLER

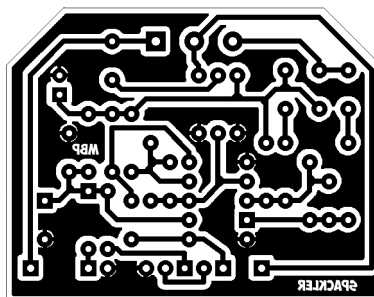
**FX TYPE: Boost**

Based on the Demeter Fat Control™

© 2016 madbeanpedals



1.95" W x 1.525" H



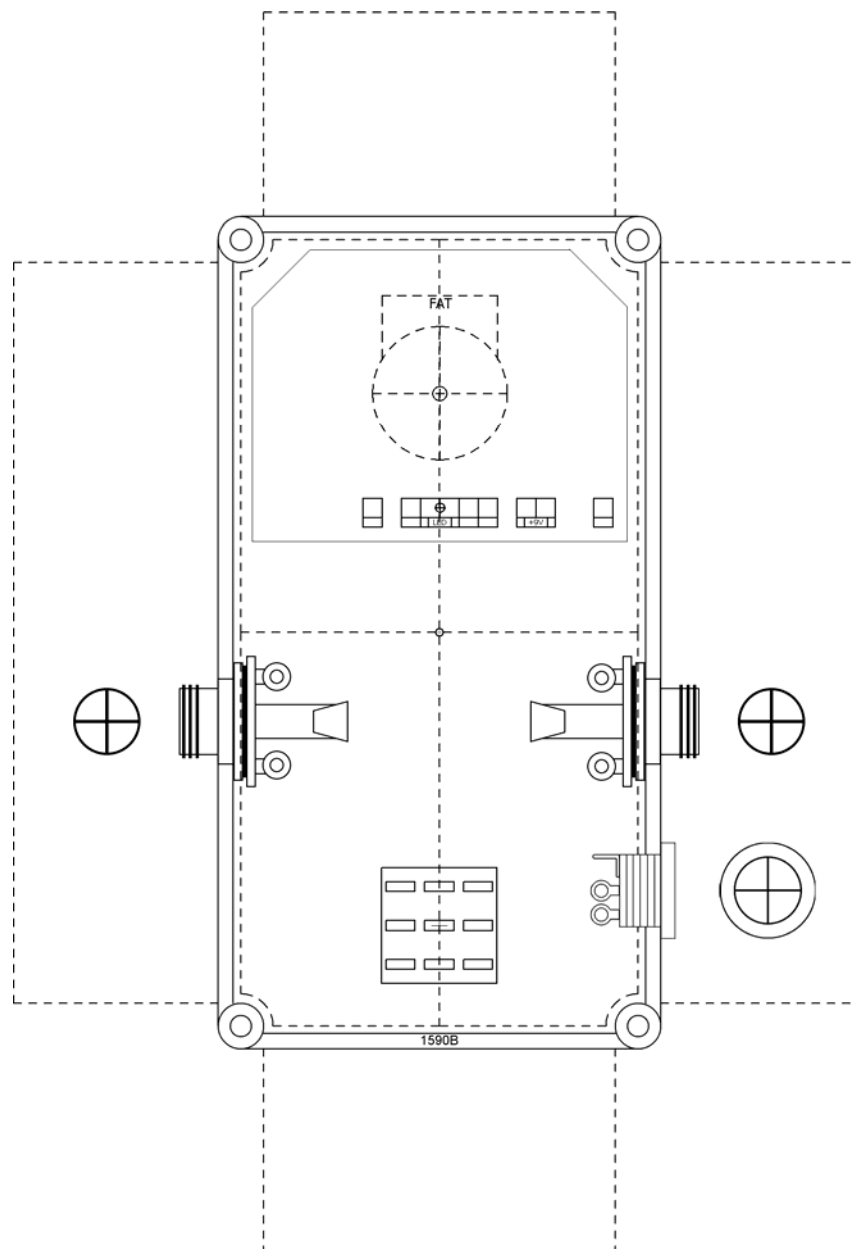
*Etcher's Paradise projects are intended for DIY use only! Commercial pedal manufacturing using these materials is strictly forbidden.*

B.O.M.					
Resistors		Caps		Diodes	
R1	2M2	C1	47n	D1	1N5817
R2	1M	C2	22pF	IC	
R3	33k	C3	100n	IC1	LF442
R4	100k	C4	22pF	Pot	
R5	20k	C5	220n	FAT	50kB
R6	100k	C6	10n		
R7	100k	C7	1uF		
R8	20k	C8	220uF		
R9	1k8	C9	100n		
R10	220k	C10	100uF		
R11	100k				
R12	100k				
R13	4k7				

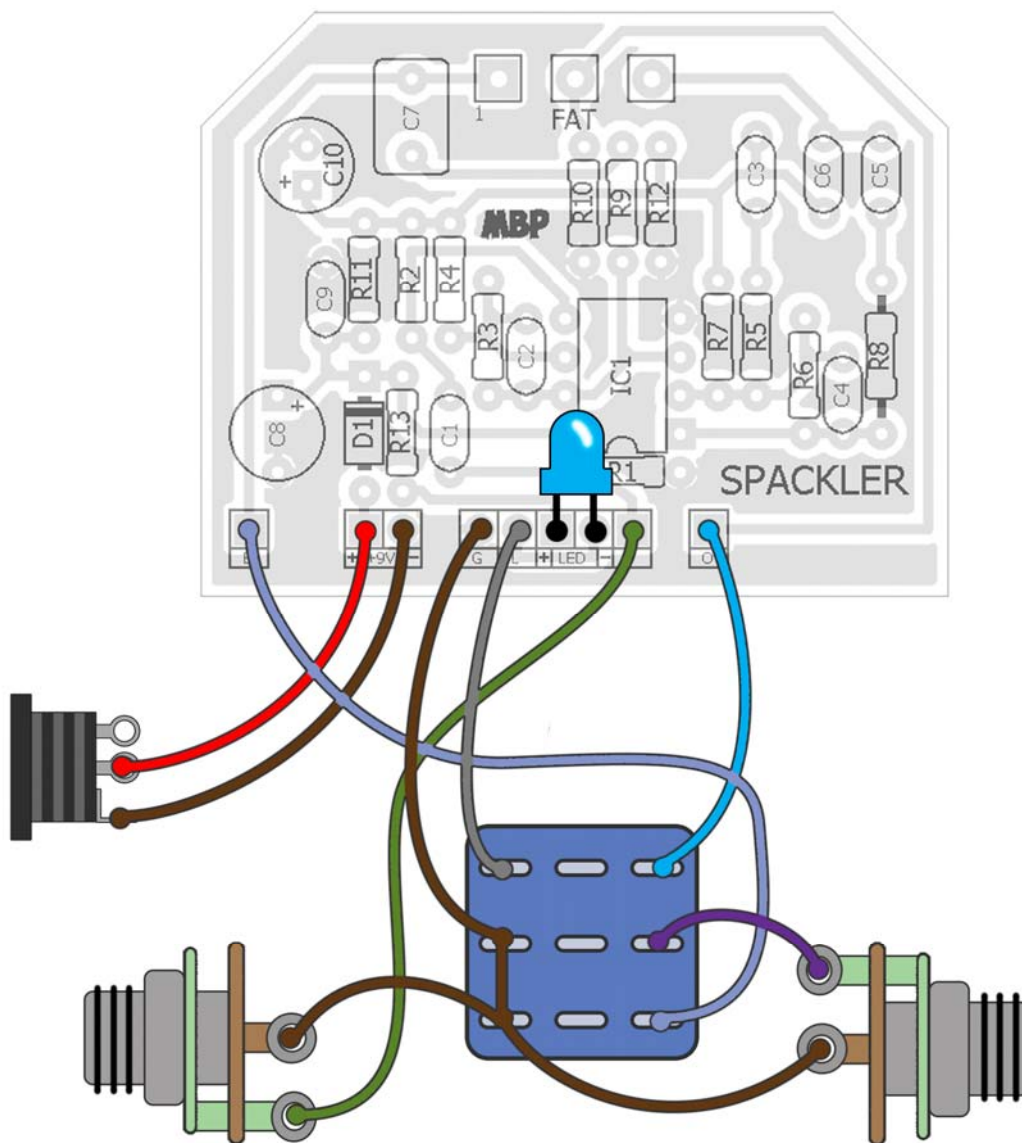
Shopping List				
Value	QTY	Type	Rating	
1k8	1	Metal/Carbon Film	1/4W	
4k7	1	Metal/Carbon Film	1/4W	
20k	2	Metal/Carbon Film	1/4W	
33k	1	Metal/Carbon Film	1/4W	
100k	5	Metal/Carbon Film	1/4W	
220k	1	Metal/Carbon Film	1/4W	
1M	1	Metal/Carbon Film	1/4W	
2M2	1	Metal/Carbon Film	1/4W	
22pF	2	Ceramic	16v min.	
10n	1	Film	16v min.	
47n	1	Film	16v min.	
100n	2	Film	16v min.	
220n	1	Film	16v min.	
1uF	1	Film	16v min.	
100uF	1	Electrolytic	16v min.	
220uF	1	Electrolytic	16v min.	
1N5817	1			
LF442	1			
50kB	1	PCB Right Angle	16mm	

## 1590B Drill Guide

4.43"W x 6.46"H



## Wiring Guide



*If you do not want to use buffer bypass, simply wire the circuit for True-Bypass and leave the "B" pad unconnected.*

