

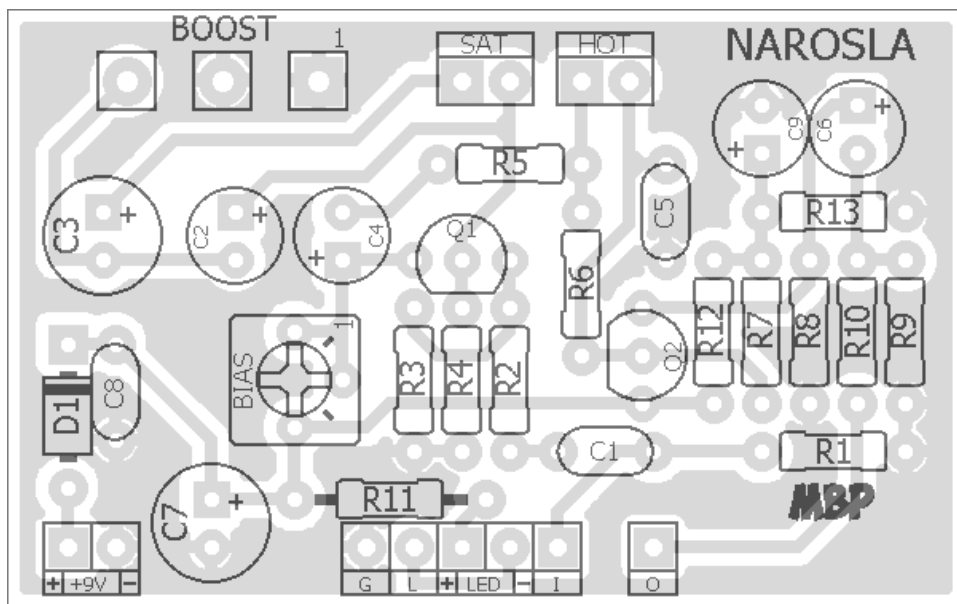
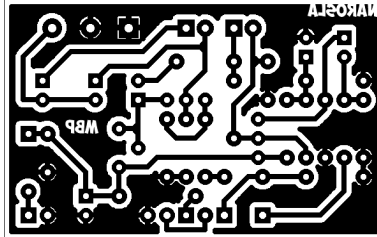
NAROSLA

FX TYPE: Boost

Based on the Xotic EP Booster™

© 2016 madbeanpedals

2.0" W x 1.25" H



Notes

Bias trim not featured on the original design. Use it to set the drain of Q1 to approximately 4.5v. If running the circuit at 18v, set the bias trim to somewhere b/w 9-12v.

SAT – warmer/more saturated

HOT – brighter, louder

Etcher's Paradise projects are intended for DIY use only! Commercial pedal manufacturing using these materials is strictly forbidden.

B.O.M.					
Resistors		Caps		Diodes	
R1	1M	C1	47n	D1	1N5817
R2	33k	C2	10uF	Transistors	
R3	1M	C3	100uF	Q1	J201
R4	4k7	C4	10uF	Q2	Si
R5	1k	C5	3n3	Switches	
R6	15k	C6	10uF	SAT	SPST
R7	1M	C7	100uF	HOT	SPST
R8	10k	C8	100n	Trimmer	
R9	47k	C9	10uF	BIAS	50k
R10	100R			Pot	
R11	4k7			BOOST	10kC
R12	10k				
R13	10k				

Shopping List				
Value	QTY	Type	Rating	
100R	1	Metal / Carbon Film	1/4W	
1k	1	Metal / Carbon Film	1/4W	
4k7	2	Metal / Carbon Film	1/4W	
10k	3	Metal / Carbon Film	1/4W	
15k	1	Metal / Carbon Film	1/4W	
33k	1	Metal / Carbon Film	1/4W	
47k	1	Metal / Carbon Film	1/4W	
1M	3	Metal / Carbon Film	1/4W	
3n3	1	Film	25v min.	
47n	1	Film	25v min.	
100n	1	Film	25v min.	
10uF	2	Electrolytic	25v min.	
47uF	2	Electrolytic	25v min.	
100uF	2	Electrolytic	25v min.	
1N5817	1			
J201	1			
Si	1	2n5088, 2n3904, etc.		
SPST	2	or, SPDT		
50k	1	Bourns 3362P		
10kC	1	PCb Right Angle	16mm	

1590B Drill Guide

4.43"W x 6.47"H

