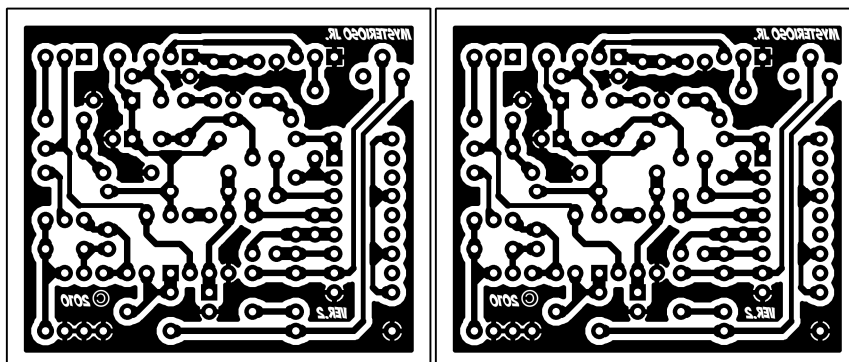
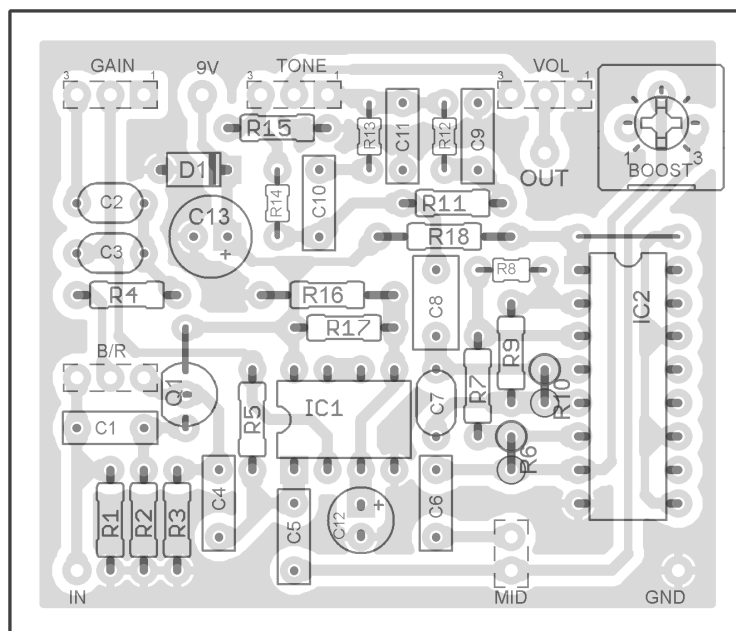


MYSTERIOSO JR.

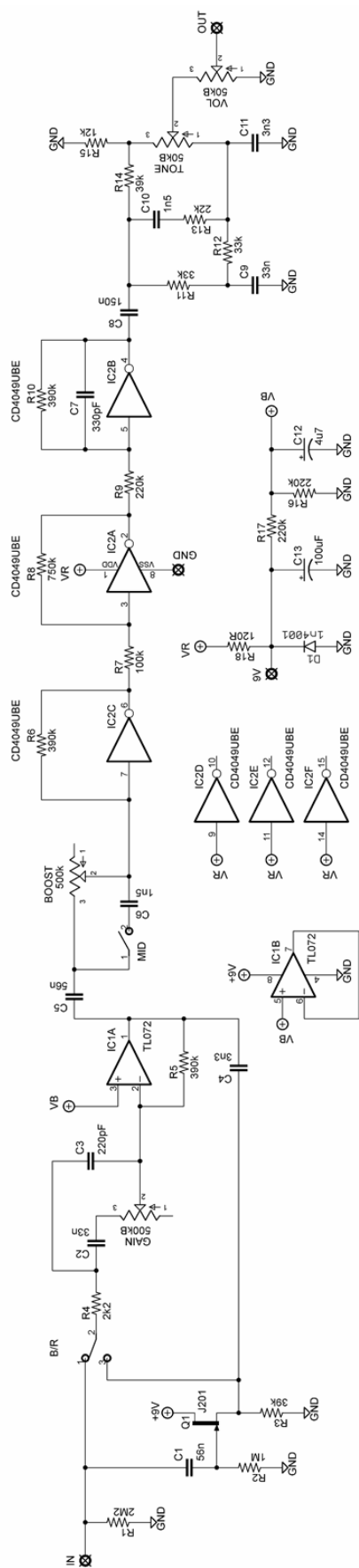
(based on the Blackstone Appliances Mosfet Overdrive – single channel version)

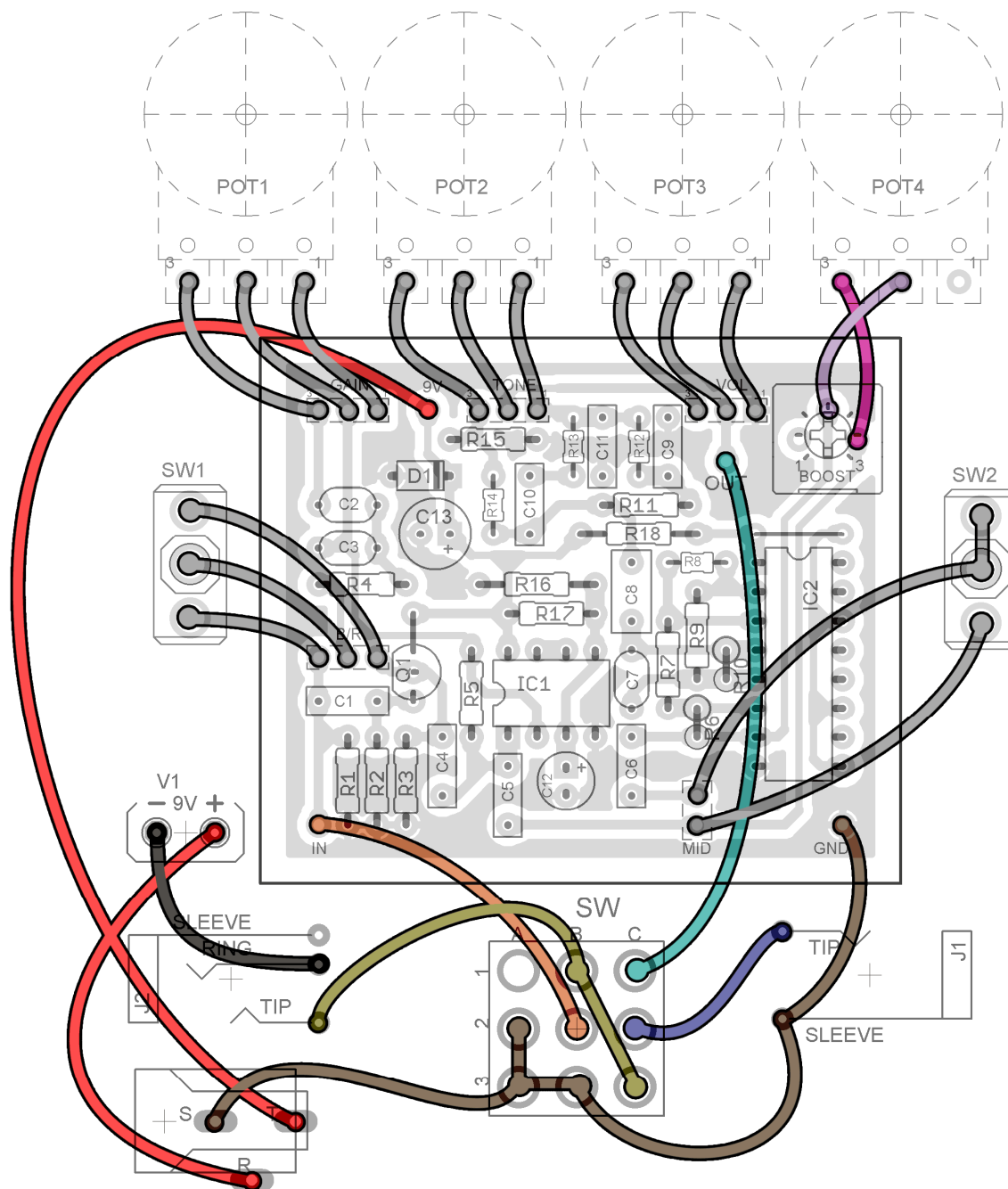
PCB artwork ©2010 madbeanpedals

Ver.2 03.22.10



Resistors		Caps		Transistors	
R1	2M2	C1	56n	Q1	J201
R2	1M	C2	33n	Pots	
R3	39k	C3	220pF	BOOST	500k
R4	2k2	C4	3n3	GAIN	500kB
R5	390k	C5	56n	TONE	50kB
R6	390k	C6	1n5	VOL	50kB
R7	100k	C7	330pF	Switches	
R8	750k	C8	150n	B/R	SPDT
R9	220k	C9	33n	MID	SPST
R10	390k	C10	1n5		
R11	33k	C11	3n3		
R12	33k	C12	4u7		
R13	22k	C13	100uF		
R14	39k	Diodes			
R15	12k	D1	1n4001		
R16	220k	IC's			
R17	220k	IC1	TL072		
R18	120R	IC2	CD4049UBE		

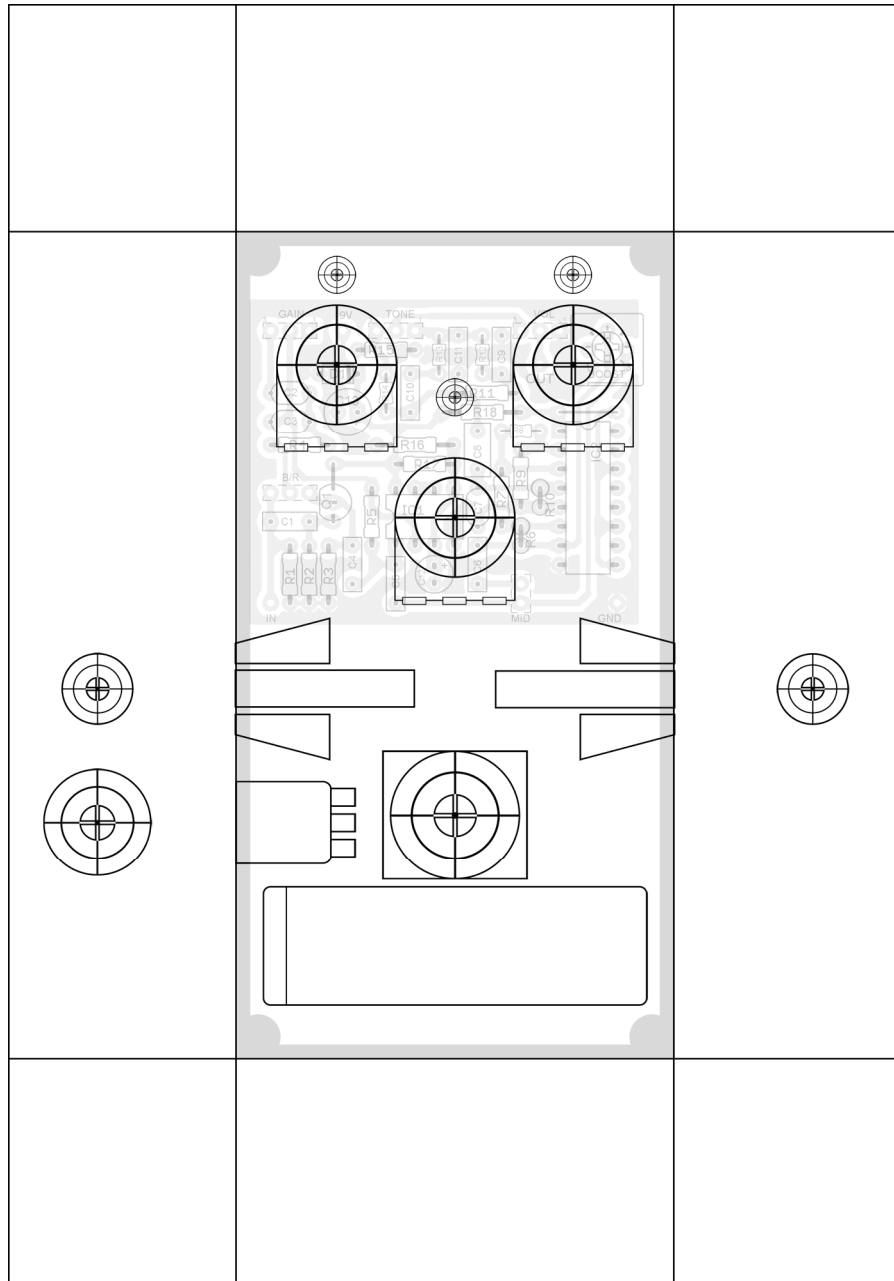




Notes

- The **B/R** switch stands for Buffer/Reactive. The Buffer side passes the input through a jFet buffer before going to the gain control. The Reactive side bypasses the buffer.
- The **MID** switch lets you choose between full range and midrange in conjunction with the **Boost** control. You can use either an SPST or SPDT.
- Increasing **C7** will also decrease the overall midrange in the effect. You can try going up to 1n for guitar or 10n for bass.
- You can use either an internal trimmer for boost or external pot (recommended). You could also wire the **Boost** control to another 3PDT to give you second channel.
- Note the jumper between the boost trimmer and the 4049UBE.

1590B/1290S Enclosure



This drilling template is provided "as is". Use at your own risk!