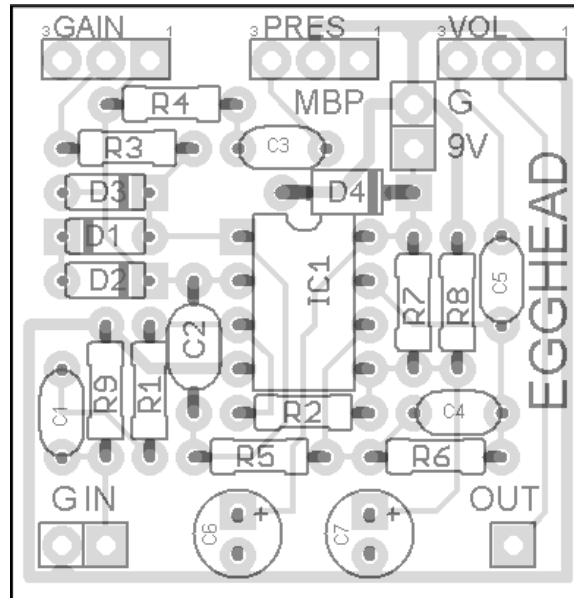


EGGHEAD

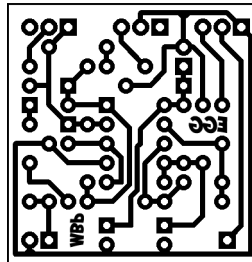
fx type: overdrive

© 2012 [madbeanpedals](http://madbeanpedals.com)

Updated 03.02.13



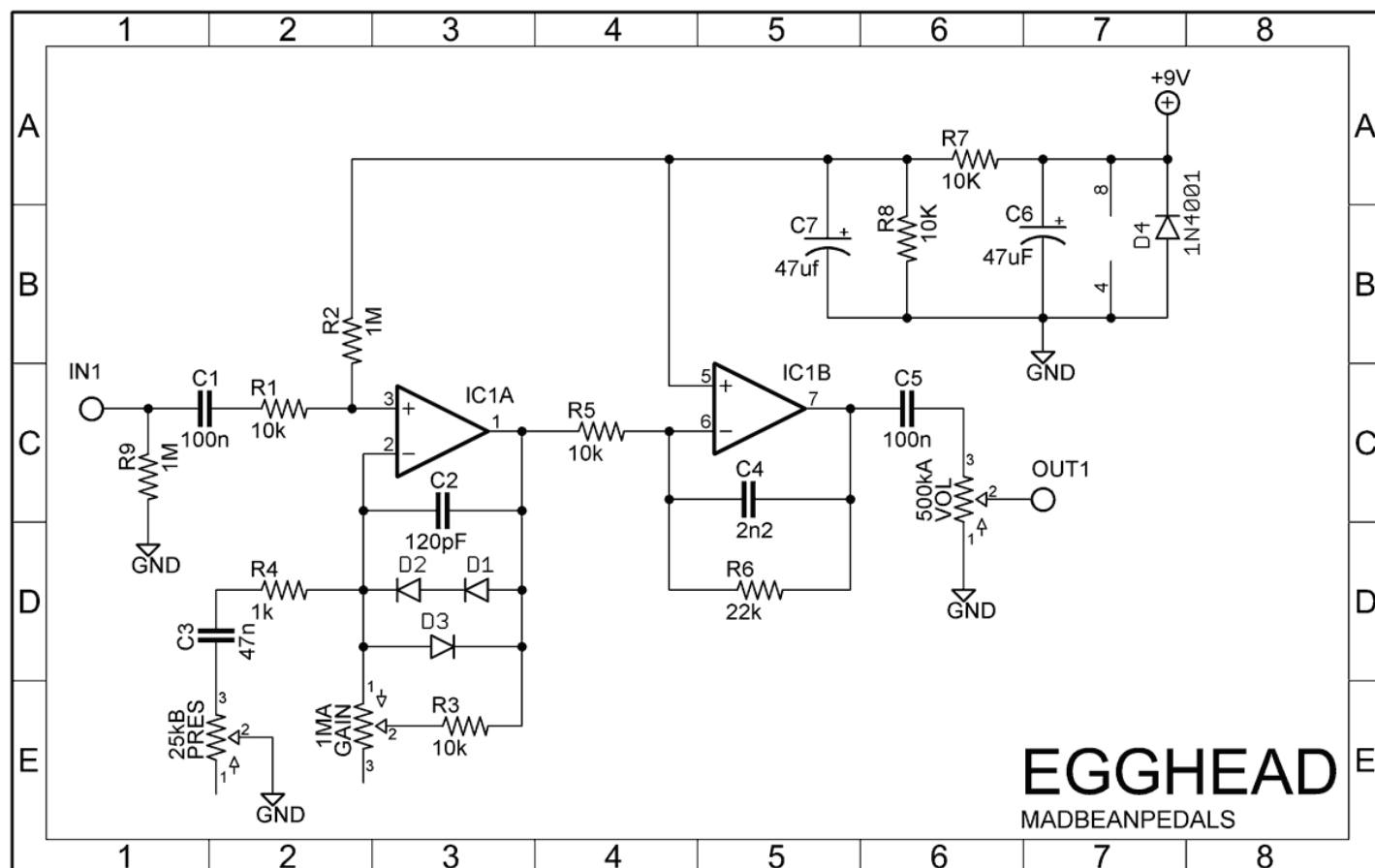
1.31" W x 1.36" H (inc. borders)



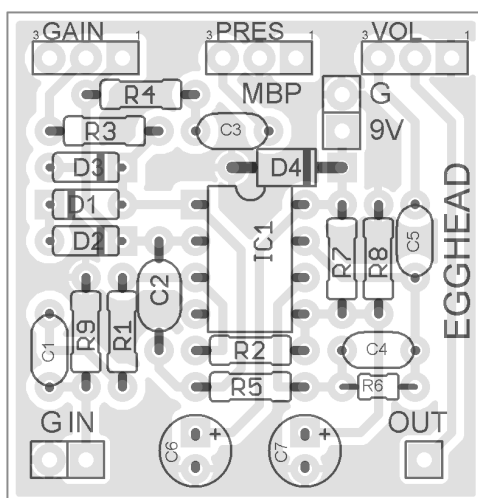
PCBs purchased from madbeanpedals (or etched from the included PCB artwork) may be used for small quantities of commercial pedal building (bulk discounting on PCBs is not offered). You may not, however, offer these PCBs for commercial resale (re-distribution) or as part of a "kit". Selling and trading through DIY forums is, as always, completely legit.

www.madbeanpedals.com
BUILD.SHARE.LEARN

Schematic



Note: The “Holiday Giveaway” version (from Dec. 2012) was slightly different. The positions of R5 and R6 were altered as follows. No circuit changes were made between the giveaway and production versions of the PCB.



B.O.M.

Resistors		Caps		Diodes	
R1	10k	C1	100n	D1 – D3	1n914
R2	1M	C2	120pF	D4	1N4001
R3	10k	C3	47n	IC	
R4	1k	C4	2n2	IC1	TL072
R5	10k	C5	100n	Pots	
R6	22k	C6	47uF	GAIN	1MA
R7	10K	C7	47uf	PRES	25kB
R8	10K			VOL	500kA
R9	1M				

Overview

The **EggHead** is a version of the Clark Gainster™ overdrive fitted for the 1590A enclosure in the Baby Board line of madbeanpedals projects. It's a simple and smooth sounding OD, takes only a few minutes to build and should not cost more than \$30 with enclosure and hardware.

Gain – The total amount of overdrive.

Pres – The presence control adjusts the frequency rolloff at which the overdrive is applied. Counter-clockwise results in more bass content and clockwise applies smooth overdrive to the higher frequencies on the guitar.

Vol – The total output.

Notes

The stock Gainster™ features some unusual parts for an overdrive pedal, namely high voltage and/or tropical fish capacitors, carbon comp resistors and other mojo. If you search for the Gainster online you will find a variety of components in different builds/versions. You need not use these for the EggHead, and will not be able to considering the size of the PCB. You should stick to the standard parts for the Egghead: 5mm caps and 1/4W resistors (or even 1/8W). A Silver Mica is suggested for C2.

R9 is an optional pull-down resistor not featured in the Gainster™.

A socket for the IC is a good idea since you might want to experiment with different op-amps. Besides the TL072/JRC072, try LF353 or TLC2262.

If this is your first "Baby Board" build, make sure to take a look at the guide I've written for building effects in 1590A enclosures.

<http://www.madbeanpedals.com/downloads/BabyBoardGuide.pdf>

Of course, you could also build the EggHead into some kind of dual channel overdrive or an overdrive/boost. It would be easy to fit the Egghead and a boost in a 1590B with two foot switches to turn them on independently. Experimentation is encouraged.