

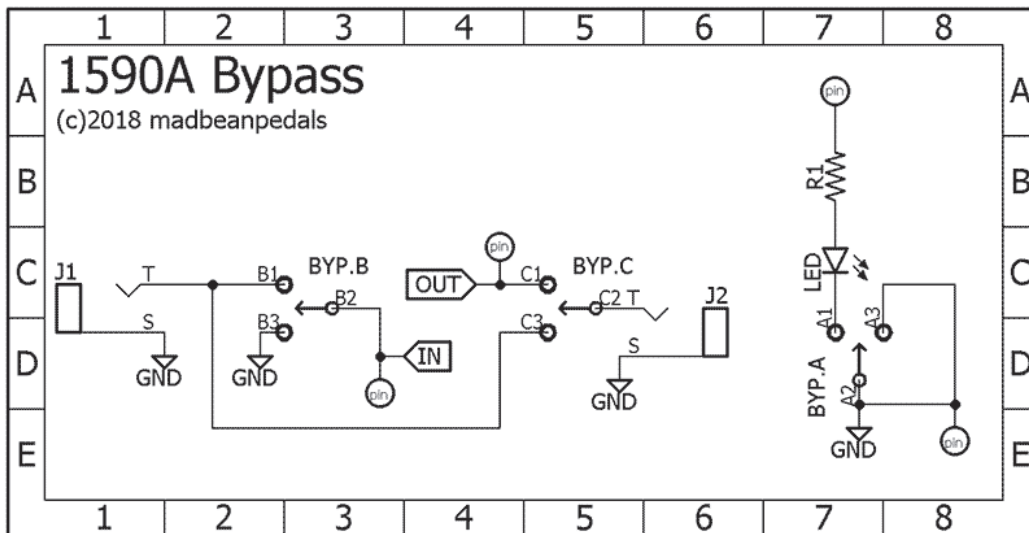
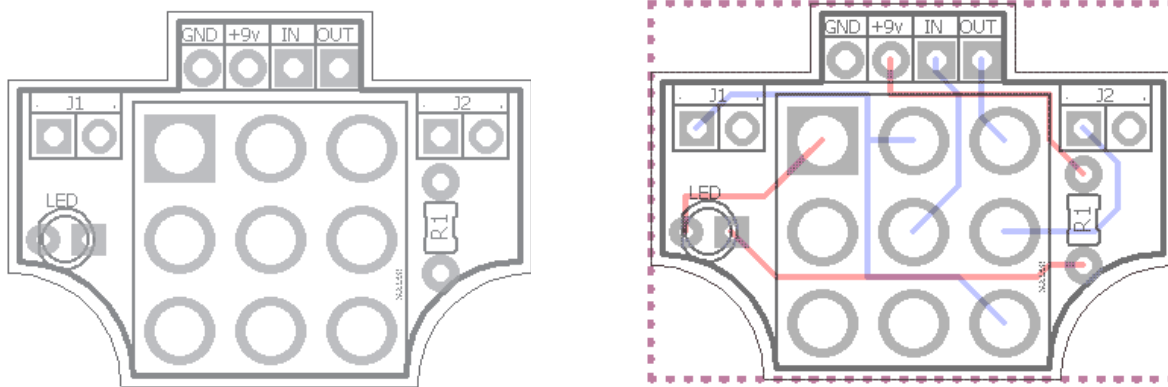


1590A 3PDT

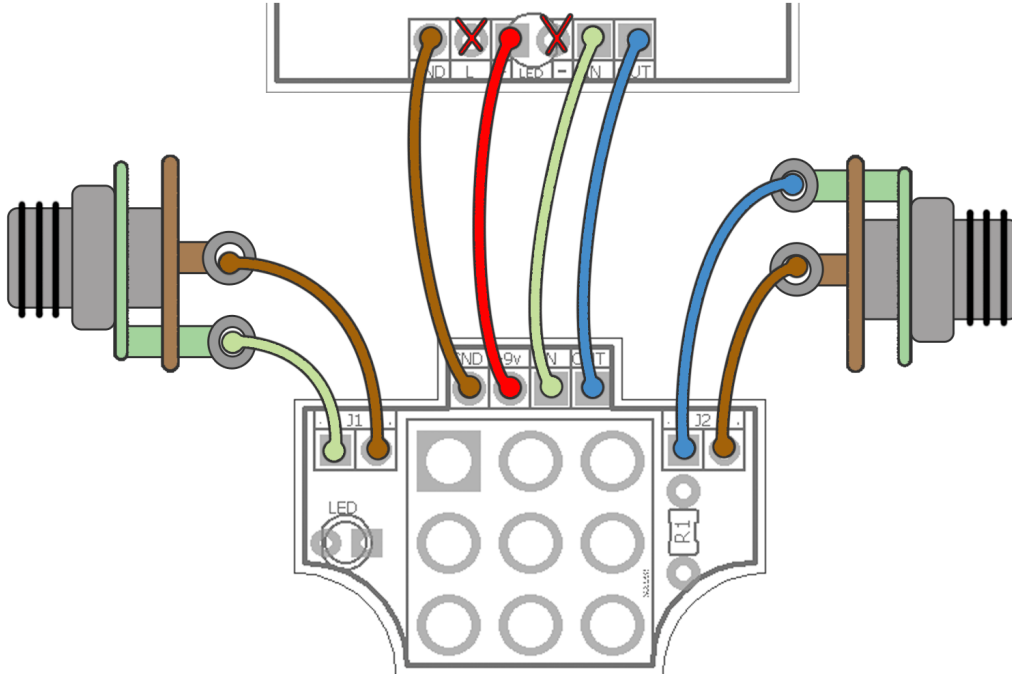
FX TYPE: Utility

© 2018 [madbeanpedals](http://madbeanpedals.com)

As you can guess, the 1590A 3PDT is designed specifically for building in 1590A enclosures. The smallest foot-print possible was used so that your 3PDT can get as close as possible to the enclosure wall. Building it is simple: solder your switch and wires to the PCB. Place your LED indicator loose into the pads on the 3PDT board. When the switch is secured to the enclosure, drop the LED through the drilled hole and solder it in place.



Wiring

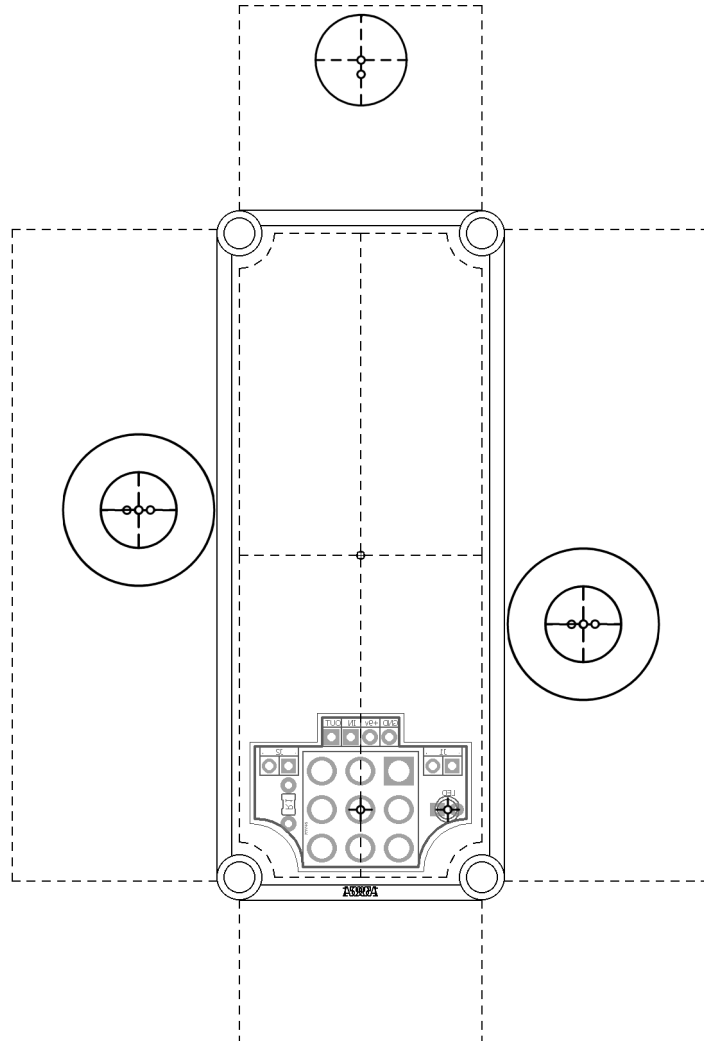


This example shows how a typical madbeanpedals project should be wired with this board. Since the bypass LED is now on the switch board you need to do one of the following:

1. Leave the CLR for the bypass LED on the main circuit board (every mbp 1590A project has one) and jumper the R1 resistor spot on the daughter board
2. Jumper the CLR on the main circuit board and put the CLR in the R1 spot on the daughter board.

In either case, the same wiring is used.

Drilling



You can use this drilling guide for all the mbp 1590A projects and probably most other ones, too. It doesn't show any pot locations since these are always going to be different. But the main hardware stuff stays more or less in the same place on all the mbp projects. I left a little wiggle room on the switch location but this could be move slightly closer to the enclosure wall if absolutely necessary.

Remember this is a top-down view, so the bypass LED location is on the right since the board is up-side-down in the enclosure.