

3PDT-04

FX TYPE: Bypass

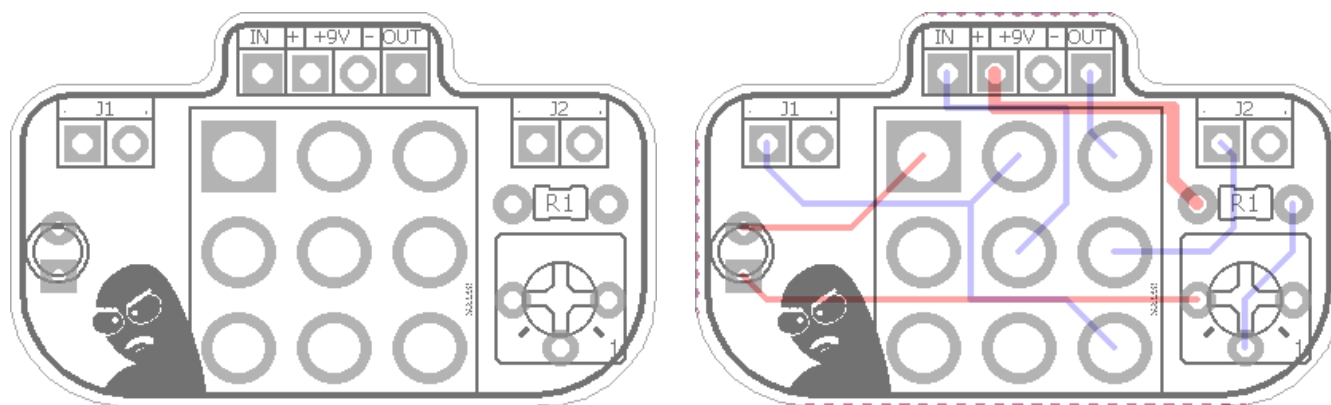
Enclosure Size: 1590B and up

© 2019 [madbeanpedals](http://madbeanpedals.com)



Overview

The 3PDT-04 is a simple bypass PCB that includes a trimmer to adjust the total LED brightness.



Part	Value	QTY	Type	Rating
R1	1k	1	Metal / Carbon Film	1/8W
ADJ	20k	1	Bourns 3362p	
LED	any	1	3 or 5mm	
3PDT	Lug	1		

Terms of Use: You are free to use purchased **3PDT-04** circuit boards for both DIY and small commercial operations. You may not offer **3PDT-04** PCBs for resale or as part of a "kit" in a commercial fashion. Peer to peer re-sale is fine, though.

Technical assistance for your build(s) is available via the [madbeanpedals forum](http://madbeanpedals.com/forum). Please go there rather than emailing me for assistance on builds. This is because (1) I'm not always available to respond via email in a timely and continuous manner, and (2) posting technical problems and solutions in the forum creates a record from which other members may benefit.

Not much to say here. The ADJ trimmer increases the brightness of the LED as you turn it up. You can use other values for the trimmer like 10k, 22k, 25k.

Resistors:

<http://smallbear-electronics.mybigcommerce.com/resistors-1-8-w-1-metal-film/>

Trimmer:

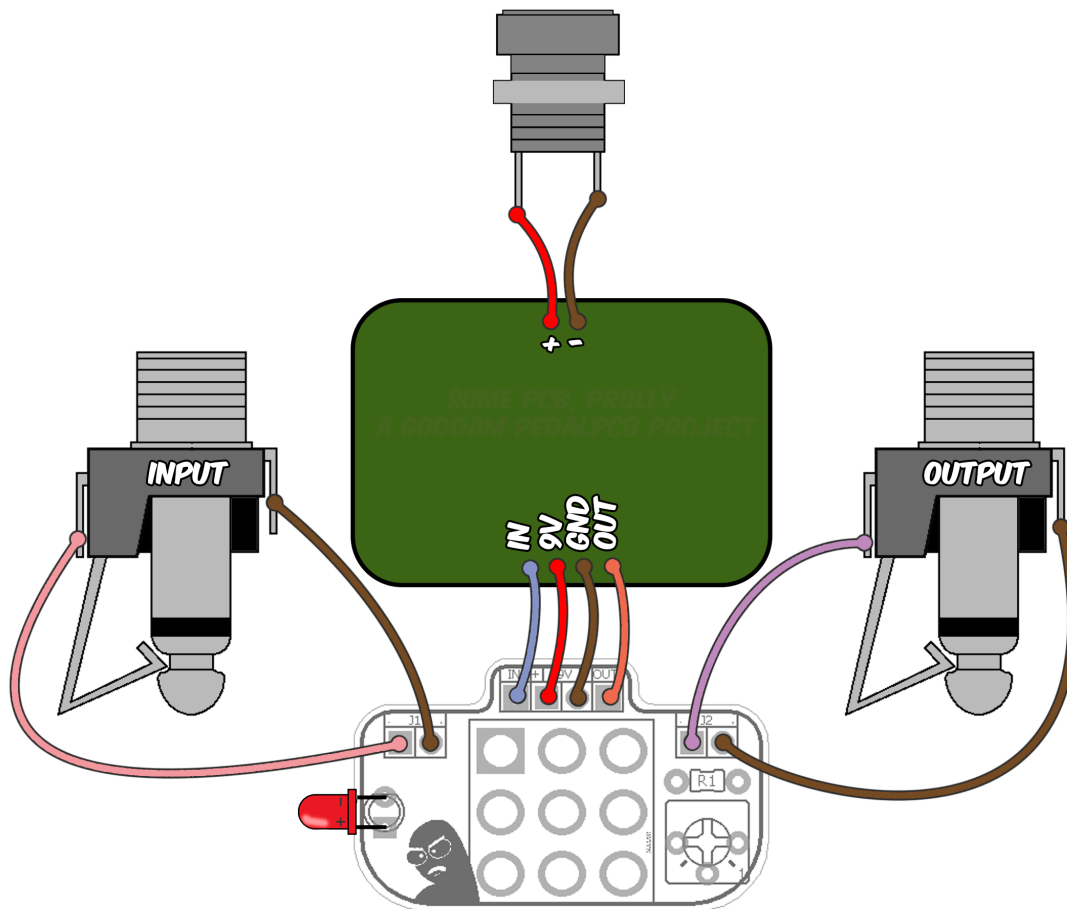
<https://www.taydaelectronics.com/potentiometer-variable-resistors/cermet-potentiometers/3362p/20k-ohm-trimmer-potentiometer-cermet-1-turn-3362p.html>

<https://www.mouser.com/ProductDetail/Bourns/3362P-1-203LF?qs=sGAEpiMZZMvygUB3GLcD7iDNlz%2FNDKomhkYgCqD12rc%3D>

3PDT:

<http://smallbear-electronics.mybigcommerce.com/cic-blue-3pdt/>

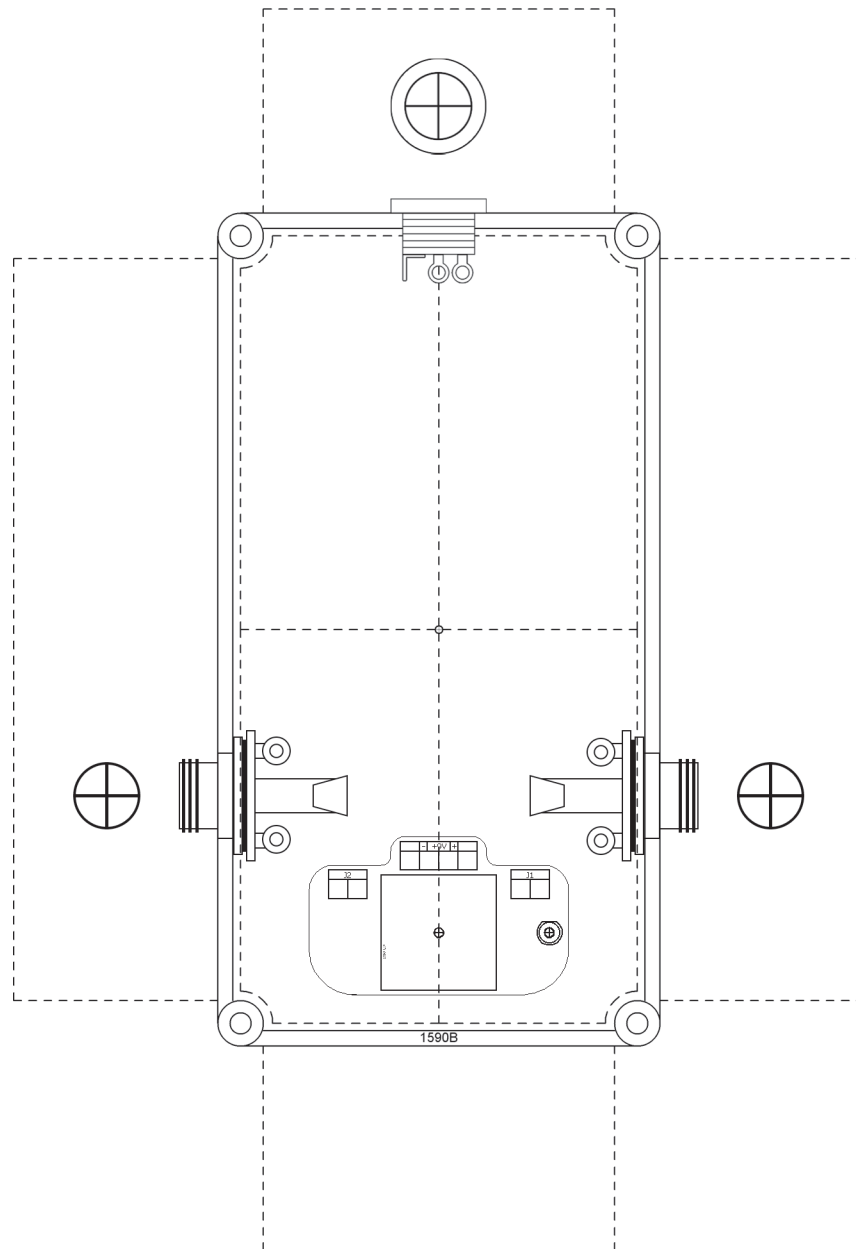
<https://lovemyswitches.com/3pdt-latched-foot-switch-solder-lugs-blue/>



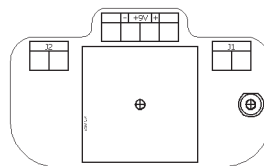
This diagram shows a generic wiring that will work for many different PCBs out there. Some designers do their I/O configuration just like this, in fact. Not madbeanpedals though, because madbeanpedals tries every other way before finding the correct one!



Note: Drill Guides are approximate and may require tweaking depending on the types of jacks, switches and pots you use.



This template shows a typical layout for a 1590B using the 3PDT-04.



This shows the exact footprint of the 3PDT-04 PCB. The LED is 14.6mm from the center of the 3PDT.

