

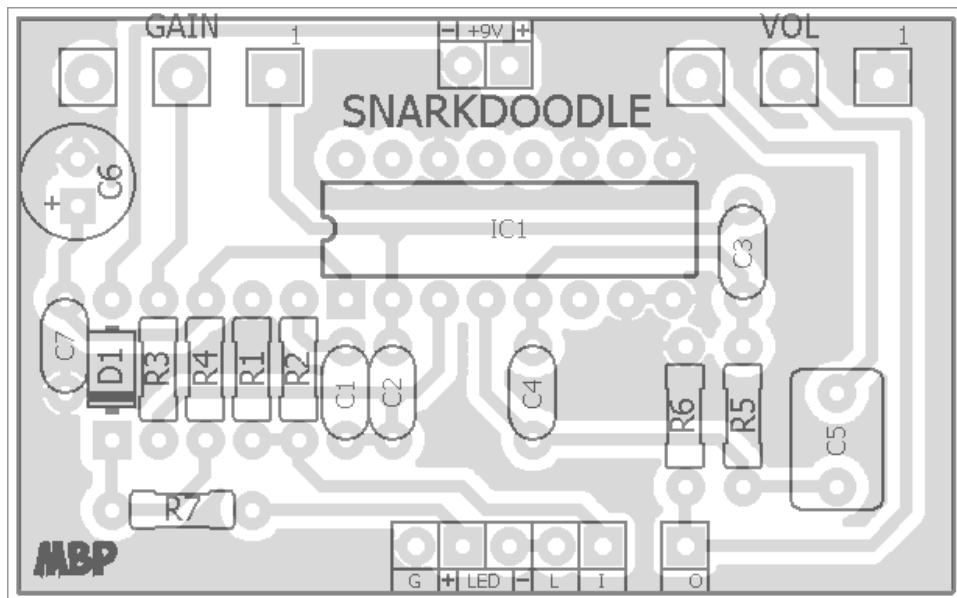
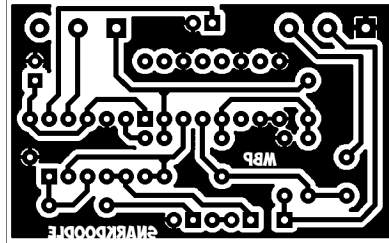
# SNARKDOODLE

**FX TYPE: Distortion**

Based on the Way Huge® Red Llama™

© 2016 madbeanpedals

**2.05" W x 1.27" H**



*Etcher's Paradise projects are intended for DIY use only! Commercial pedal manufacturing using these materials is strictly forbidden.*

B.O.M.					
Resistors		Caps		Diodes	
R1	1M	C1	68n	D1	1N5817
R2	100k	C2	51pf	IC	
R3	100k	C3	33n	IC1	CD4049UBE
R4	330R	C4	100pF	Pots	
R5	1M	C5	1uF	VOL	10kA
R6	1M	C6	100uF	GAIN	1MB
R7	4k7	C7	100n		

Shopping List				
Value	QTY	Type	Rating	
330R	1	Metal / Carbon Film	1/4W	
4k7	1	Metal / Carbon Film	1/4W	
100k	2	Metal / Carbon Film	1/4W	
1M	3	Metal / Carbon Film	1/4W	
51pf	1	Ceramic	16v min.	
100pF	1	Ceramic	16v min.	
33n	1	Film	16v min.	
68n	1	Film	16v min.	
100n	1	Film	16v min.	
1uF	1	Film	16v min.	
100uF	1	Electrolytic	16v min.	
1N5817	1			
CD4049UBE	1			
10kA	1	PCB Right Angle	16mm	
1MB	1	PCB Right Angle	16mm	

### Mods

- 10kA for Volume pot (10kB stock)
- 100uf for C6 (330uF stock)
- 1uF film for C5 (10uF tantalum stock)
- 330R for R4 (1k stock)

# 1590B Drill Guide

4.43"W x 6.47"H

