

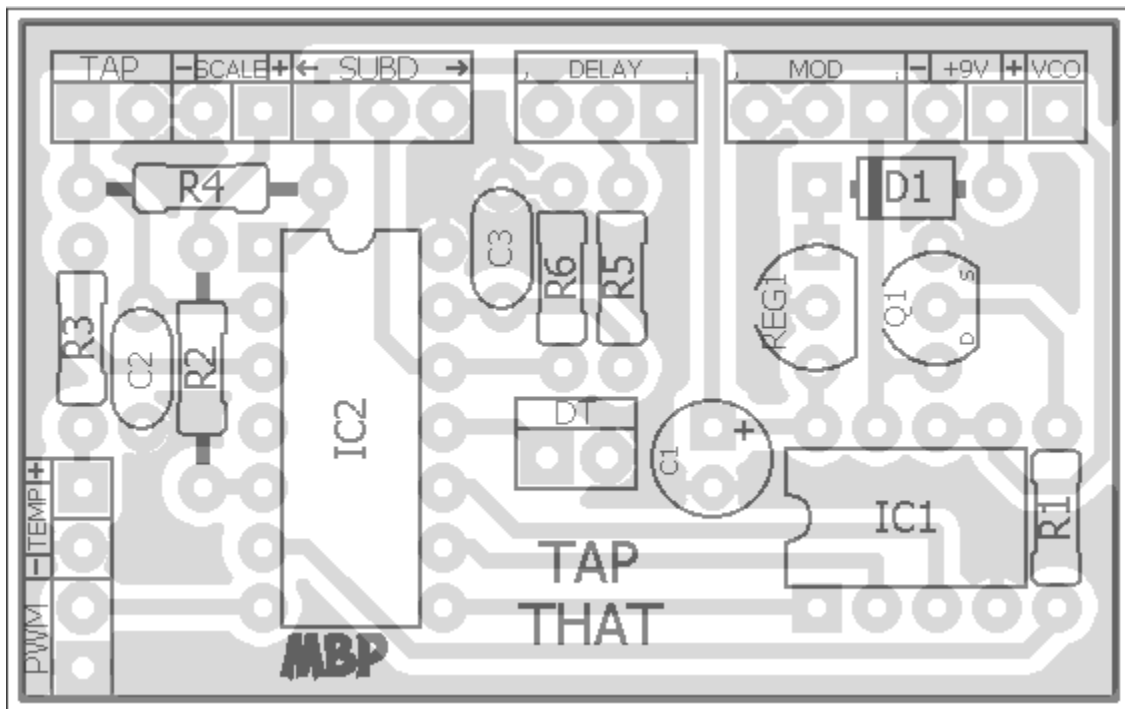
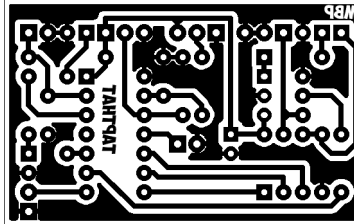
# TAPTHAT

FX TYPE: Other

Taptation Utility

© 2016 madbeanpedals

1.88" W x 1.18" H



*Etcher's Paradise projects are intended for DIY use only! Commercial pedal manufacturing using these materials is strictly forbidden.*

B.O.M.			Shopping List		
Resistors		Value	QTY	Type	Rating
R1	1k	1k	4	Metal Film	1/4W
R2	1k	100k	2	Metal Film	1/4W
R3	1k	100n	2	Film	16v min.
R4	100k	10uF	1	Electrolytic	16v min.
R5	1k	1n5817	1		
R6	100k	LED	2	* your choice	
Caps		BS170	1		
C1	10uF	LM78L05	1		
C2	100n	SPST	2	or, SPDT On/On	
C3	100n	SPDT	1	On/Off/On	
Diodes		MOM.	1	Momentary	
D1	1n5817	PIC	1		
TEMP	LED	TAPTATION	1		
SCALE	LED	100kB	1	Solder Lug	9mm or 16mm
Transistors		25kA	1	Solder Lug	9mm or 16mm
Q1	BS170				
Regulator					
REG1	LM78L05				
Switches					
DT	SPST				
PWM	SPST				
SUBD	SPDT				
TAP	MOM.				
IC's					
IC1	PIC				
IC2	TAPTATION				
Pots					
DELAY	100kB				
MOD	25kA				

Tapthat is a utility PCB for the Taptation chipset available from DIYStompboxes. The Taptation allows for tap tempo control of many PT2399-based delays. The Tapthat PCB includes options for all the available features of the Taptation in a relatively small size. You can build it into its own enclosure for external control or integrate into your delay project (if space allows).

Please read the Taptation page on DIYSB for more information:

[http://diystompboxes.com/zencart/index.php?main\\_page=product\\_info&cPath=20&products\\_id=65](http://diystompboxes.com/zencart/index.php?main_page=product_info&cPath=20&products_id=65)

### **Notes**

- To use Tapthat connect the “VCO” pad directly to pin6 of the PT2399 in your delay project.
- You do not have to use the Double Time (DT) or Pulse Wave Modifier (PWM) switches. Simply omit the switches and leave the corresponding pads unconnected.

