

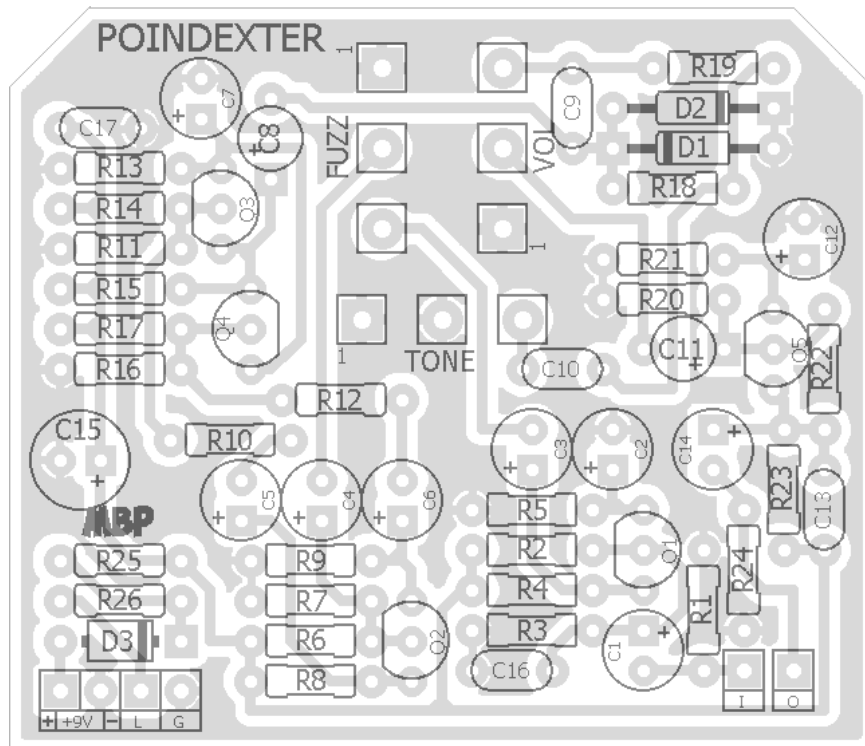
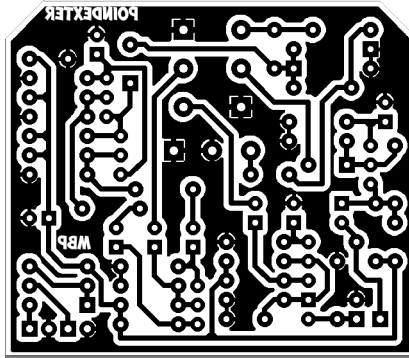
POINDEXTER

FX TYPE: Octave

Based on the “Boutique” Fuzz-Octave

© 2016 madbeanpedals

2.15 W x 1.85H



Etcher's Paradise projects are intended for DIY use only! Commercial pedal manufacturing using these materials is strictly forbidden.

B.O.M.					
Resistors		Caps		Diodes	
R1	1M	C1	10uF	D1, D2	GE
R2	100k	C2	10uF	D3	1N5817
R3	10k	C3	10uF	Transistors	
R4	10k	C4	10uF	Q1 - Q5	2N3904
R5	1k	C5	10uF	Pots	
R6	220k	C6	10uF	FUZZ	50kB
R7	150k	C7	10uF	TONE	10kB
R8	10k	C8	10uF	VOL	50kB
R9	10k	C9	1n		
R10	470R	C10	100n		
R11	22k	C11	10uF		
R12	1k	C12	10uF		
R13	2k2	C13	1n		
R14	100k	C14	10uF		
R15	10k	C15	100uF		
R16	22k	C16	10pF		
R17	100k	C17	100n		
R18	10k				
R19	10k				
R20	10k				
R21	1k				
R22	100k				
R23	10k				
R24	100k				
R25	100R				
R26	4k7				

Shopping List				
Value	QTY	Type	Rating	
100R	1	Metal/Carbon Film	1/4W	
470R	1	Metal/Carbon Film	1/4W	
1k	3	Metal/Carbon Film	1/4W	
2k2	1	Metal/Carbon Film	1/4W	
4k7	1	Metal/Carbon Film	1/4W	
10k	9	Metal/Carbon Film	1/4W	
22k	2	Metal/Carbon Film	1/4W	
100k	5	Metal/Carbon Film	1/4W	
150k	1	Metal/Carbon Film	1/4W	
220k	1	Metal/Carbon Film	1/4W	
1M	1	Metal/Carbon Film	1/4W	
10pF	1	Ceramic	16v min.	
1n	2	Film	16v min.	
100n	2	Film	16v min.	
10uF	11	Electrolytic	16v min.	
100uF	1	Electrolytic	16v min.	
GE	2	1n34a, 1n270		
1N5817	1			
2N3904	5			
50kB	2	PCB Right Angle	16mm	
10kB	1	PCB Right Angle	16mm	

1590B Drill Guide

4.43"W x 6.47"H

