



STRANGER DANGER

FX TYPE: FUZZ

The Stranger Danger is based on the EHX® Double Muff™ with an added “Presence” control.

Controls

1/2: This switch selects between one Double Muff circuits or two circuits in series.

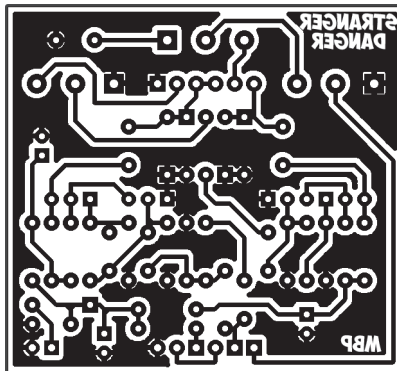
Vol 2: The master output control.

Vol 1: When using both circuits, Vol 1 acts as a gain control into the second circuit. When using one circuit, this control does nothing.

Pres: This is an added tone control. If you wish to exclude it, omit C11 and jumper pads 3&2 of the Pres pot.

Traces

2.08" W x 1.93"H



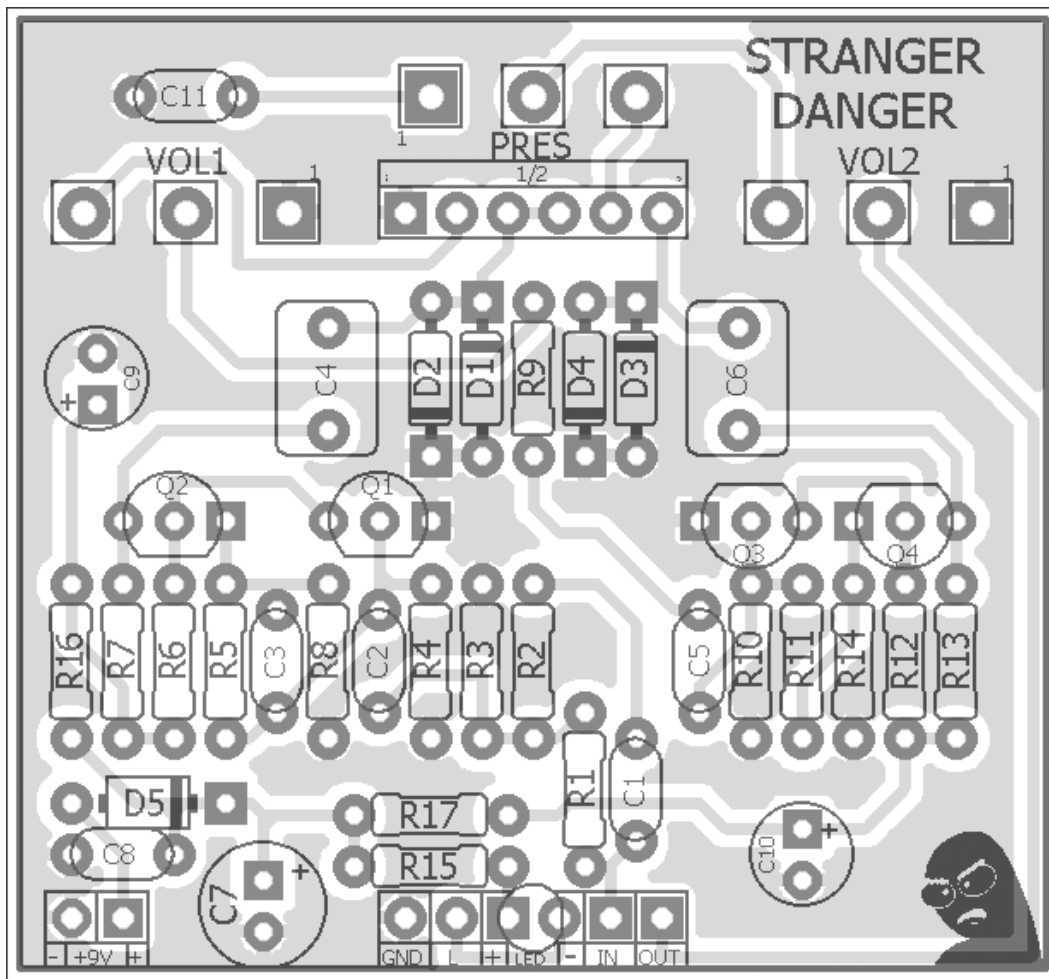
B.O.M.

| Resistors | | Caps | | Diodes | |
|-----------|------|------|-------|-------------|--------|
| R1 | 22k | C1 | 22n | D1 - D4 | 1n914 |
| R2 | 1k2 | C2 | 220n | D5 | 1N5817 |
| R3 | 2M2 | C3 | 47pF | Transistors | |
| R4 | 100k | C4 | 1uF | Q1 - Q4 | BC550 |
| R5 | 100k | C5 | 220n | Switch | |
| R6 | 100k | C6 | 1uF | 1/2 | On/On |
| R7 | 10k | C7 | 100uF | Pots | |
| R8 | 3k3 | C8 | 100n | PRES | 25kB |
| R9 | 10k | C9 | 47uF | VOL1 | 100kB |
| R10 | 100k | C10 | 47uF | VOL2 | 100kB |
| R11 | 100k | C11 | 2n2 | | |
| R12 | 100k | | | | |
| R13 | 10k | | | | |
| R14 | 3k3 | | | | |
| R15 | 4k7 | | | | |
| R16 | 1k | | | | |
| R17 | 1k | | | | |

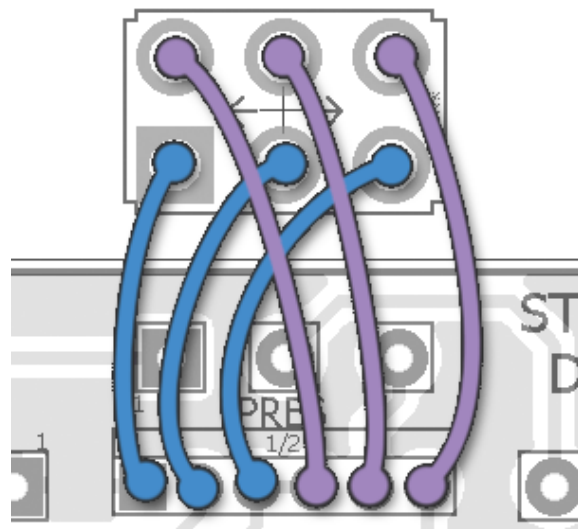
Shopping List

| Value | QTY | Type | Rating |
|--------|-----|---------------------|----------|
| 1k | 2 | Metal / Carbon Film | 1/4W |
| 1k2 | 1 | Metal / Carbon Film | 1/4W |
| 3k3 | 2 | Metal / Carbon Film | 1/4W |
| 4k7 | 1 | Metal / Carbon Film | 1/4W |
| 10k | 3 | Metal / Carbon Film | 1/4W |
| 22k | 1 | Metal / Carbon Film | 1/4W |
| 100k | 6 | Metal / Carbon Film | 1/4W |
| 2M2 | 1 | Metal / Carbon Film | 1/4W |
| 47pF | 1 | Ceramic / MLCC | 16v min. |
| 2n2 | 1 | Film | 16v min. |
| 22n | 1 | Film | 16v min. |
| 100n | 1 | Film | 16v min. |
| 220n | 2 | Film | 16v min. |
| 1uF | 2 | Film | 16v min. |
| 47uF | 2 | Electrolytic | 16v min. |
| 100uF | 1 | Electrolytic | 16v min. |
| 1n914 | 4 | | |
| 1N5817 | 1 | | |
| BC550 | 4 | or, BC549c | |
| DPDT | 1 | On/On | |
| 25kB | 1 | PCB Right Angle | 16mm |
| 100kB | 2 | PCB Right Angle | 16mm |

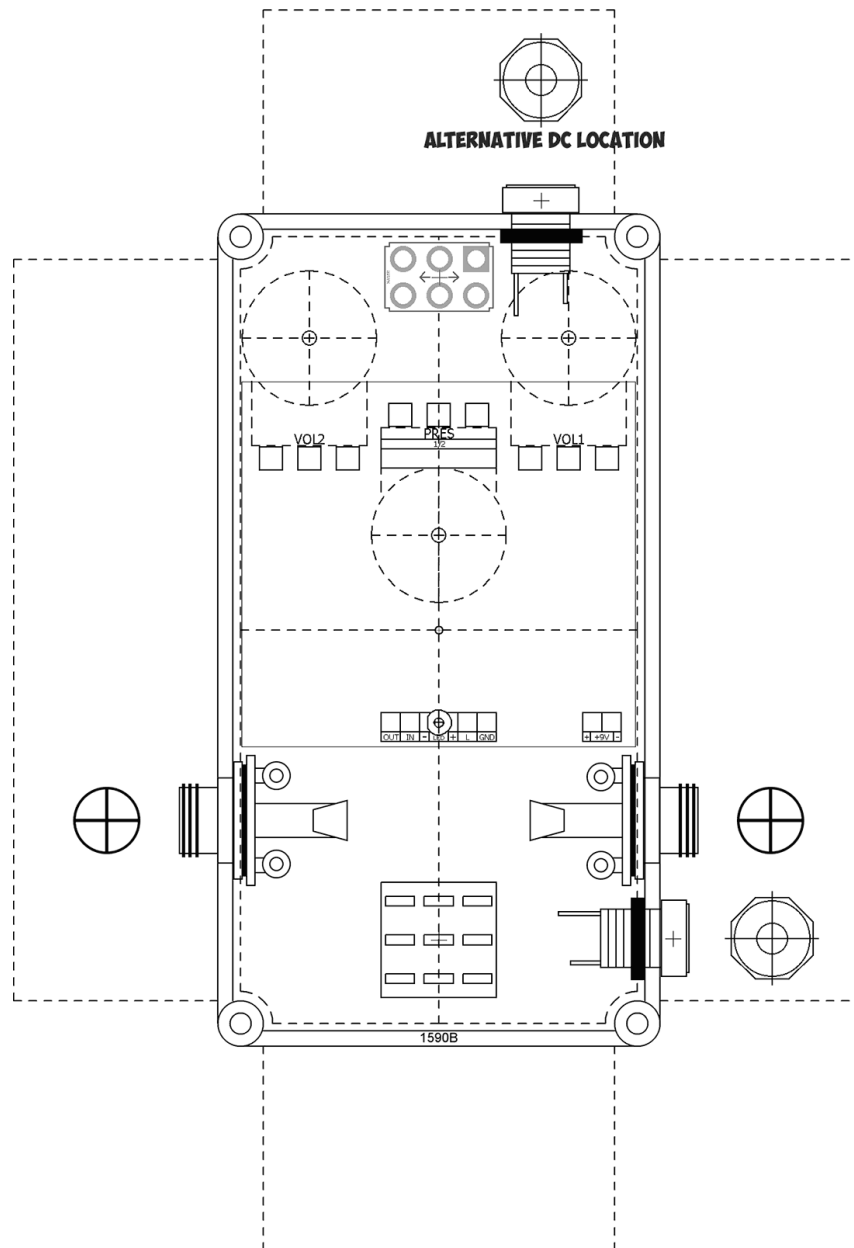
Layout



Switch Wiring



1590B Drill Guide



Schematic

