



PYLEDRIVER

FX TYPE: FUZZ

The PyleDriver is based on the MI Audio® GI Fuzz™, which is a highly tweakable silicon Tonbender-esque fuzz. Pots are used to control almost any tweakable parameter you could want.

Controls

LOAD: The input impedance load of the circuit. Turn this all the way up to load down your pickups for extra warmth (I think the idea here is to simulate a high capacitance cable).

FUZZ: The Fuzz control is set up more like the gain control of a Big Muff.

GAIN: Sets the overall output of Q2 (this was a trimmer in the original).

BIAS: Closer to the “fuzz” control of a traditional fuzz face.

TONE: A Muff-style tone control.

BODY: Mids control. Interactive with the Tone control.

VOL: The output level.

BRIGHT: Extra treble cut/smoothing at the circuit output.

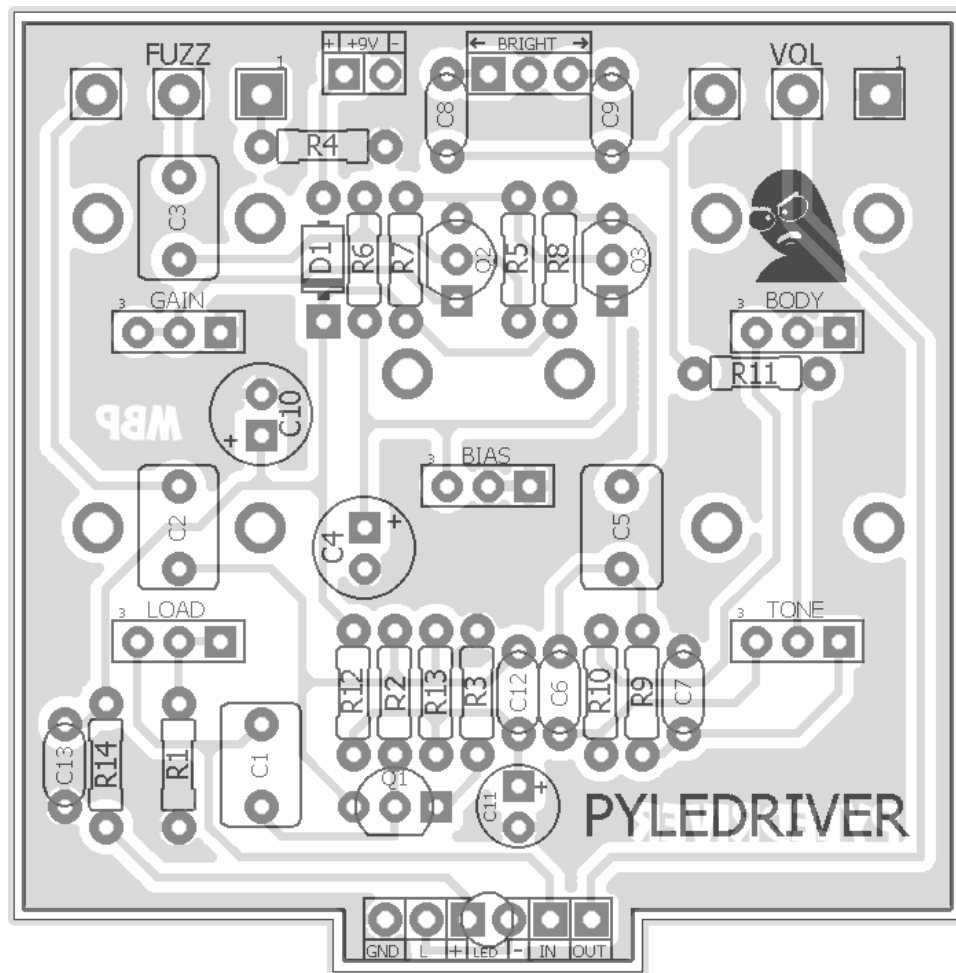
B.O.M.

Resistors		Caps		Diodes	
R1	2k2	C1	1uF	D1	1N5817
R2	1M	C2	1uF	Q1 - Q3	BC549C
R3	470R	C3	1uF	Switch	
R4	220R	C4	100uF	BRIGHT	SPDT
R5	100k	C5	1uF	Pots	
R6	100k	C6	22n	GAIN	1kB
R7	10k	C7	22n	BIAS	2kB
R8	4k7	C8	1n2	FUZZ	10kB
R9	22k	C9	3n9	BODY	20kA
R10	2k2	C10	100uF	VOL	100kA
R11	22k	C11	47uF	LOAD	100kA
R12	1k	C12	220pF	TONE	100kB
R13	4k7	C13	100n		
R14	4k7				

Shopping List

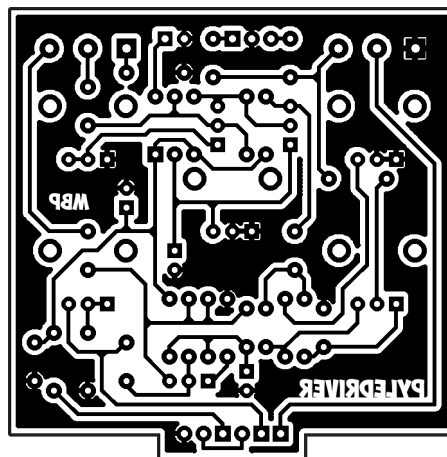
Value	QTY	Type	Rating
220R	1	Metal / Carbon Film	1/4W
470R	1	Metal / Carbon Film	1/4W
1k	1	Metal / Carbon Film	1/4W
2k2	2	Metal / Carbon Film	1/4W
4k7	3	Metal / Carbon Film	1/4W
10k	1	Metal / Carbon Film	1/4W
22k	2	Metal / Carbon Film	1/4W
100k	2	Metal / Carbon Film	1/4W
1n2	1	Film	16v min.
22n	2	Film	16v min.
100n	1	Film	16v min.
1uF	4	Film	16v min.
47uF	1	Electrolytic	16v min.
100uF	1	Electrolytic	16v min.
1N5817	1		
BC549C	3		
SPDT	1	On/Off/On	
10kB	1	PCB Right Angle	16mm
100kA	1	PCB Right Angle	16mm
1kB	1	PCB Right Angle	9mm
2kB	1	PCB Right Angle	9mm
20kA	1	PCB Right Angle	9mm
100kA	1	PCB Right Angle	9mm
100kB	1	PCB Right Angle	9mm

Layout

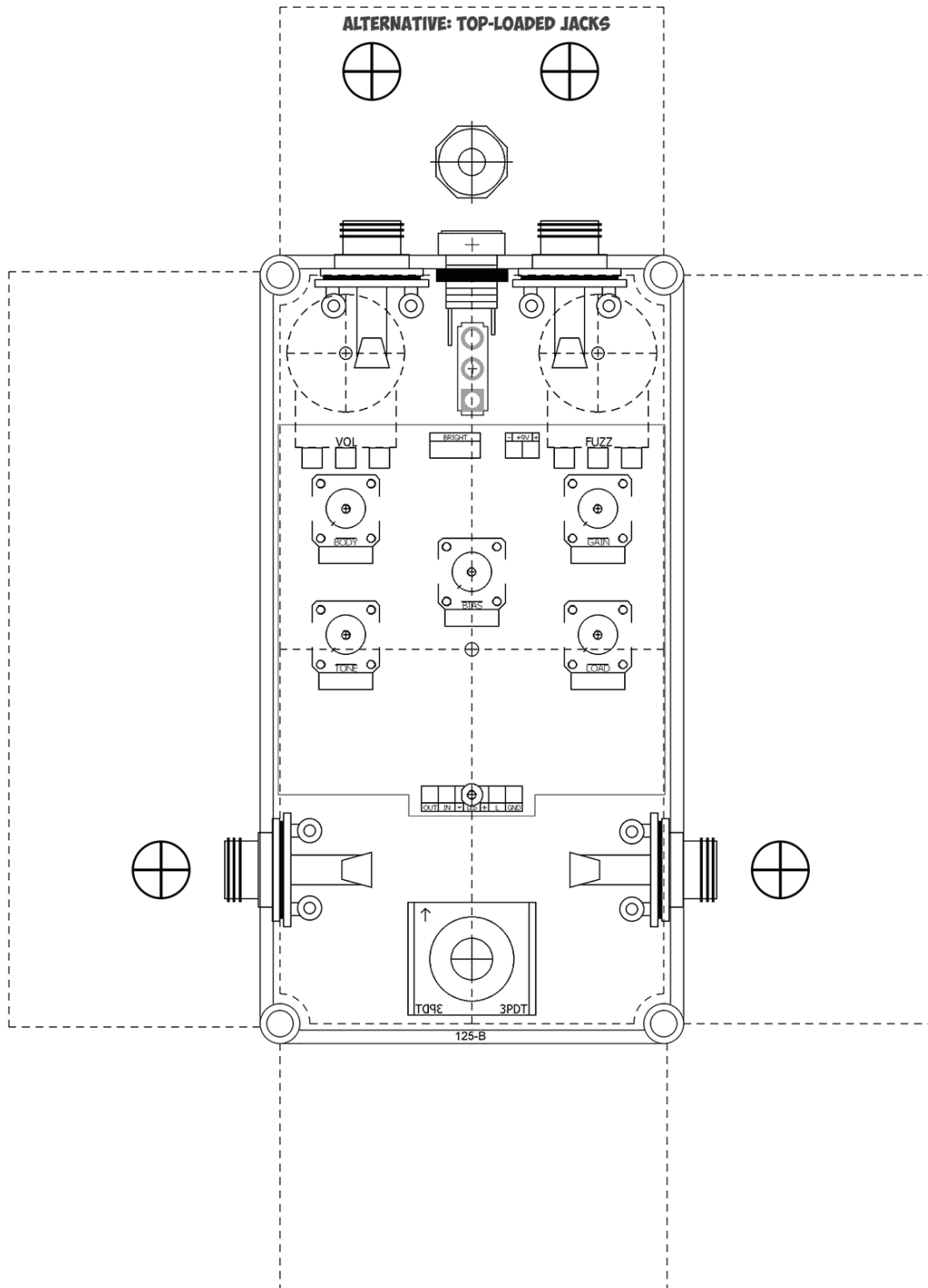


Traces

2.33" W x 2.36" H



125B Drill Guide



Schematic

