

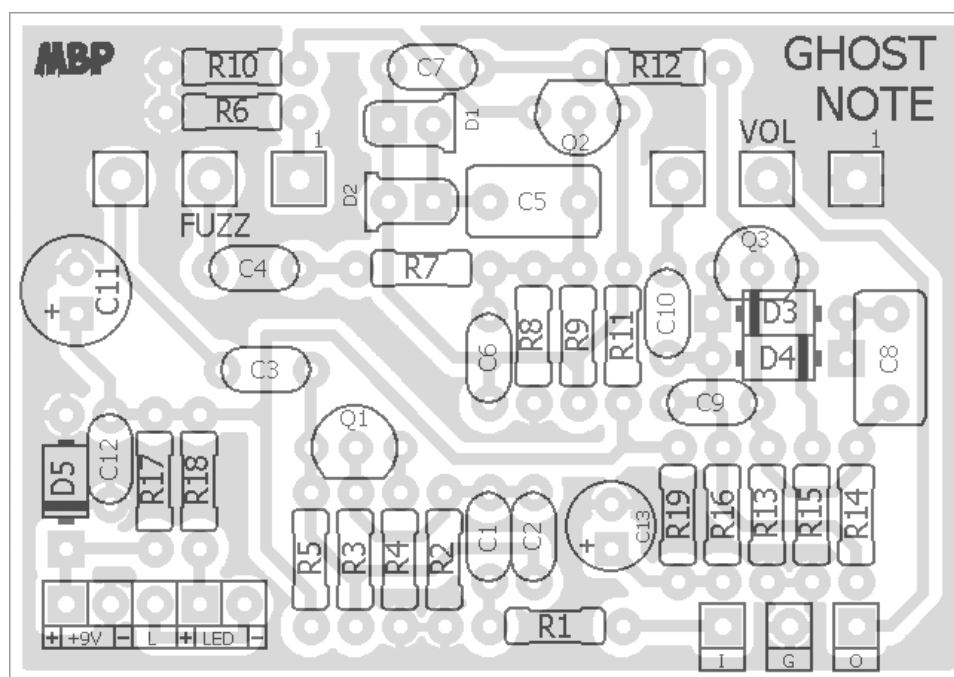
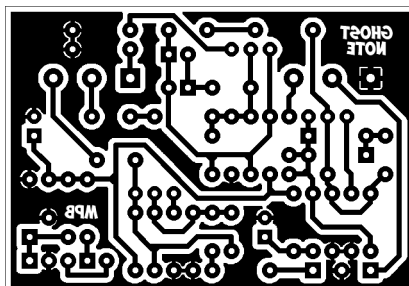
GHOST NOTE

FX TYPE: Fuzz

Based on the Haunting Mids Fuzz ver.3™

© 2016 madbeanpedals

2.15" W x 1.5" H



Etcher's Paradise projects are intended for DIY use only! Commercial pedal manufacturing using these materials is strictly forbidden.

B.O.M.					
Resistors		Caps		Diodes	
R1	33k	C1	220n	D1, D2	LED
R2	82k	C2	470pF	D3, D4	1N4742
R3	470k	C3	150n	D5	1N4001
R4	120R	C4	150n	Transistors	
R5	18k	C5	470n	Q1 - Q3	BC337
R6	1k	C6	470pF	Pots	
R7	8k2	C7	150n	VOL	100kA
R8	56k	C8	470n	FUZZ	100kB
R9	470k	C9	470pF		
R10	100R	C10	220n		
R11	10k	C11	100uF		
R12	8k2	C12	100n		
R13	82k	C13	10uF		
R14	470k				
R15	120R				
R16	18k				
R17	100R				
R18	4k7				
R19	100R				

Shopping List				
Value	QTY	Type	Rating	
100R	3	Metal/Carbon Film	1/4W	
120R	2	Metal/Carbon Film	1/4W	
1k	1	Metal/Carbon Film	1/4W	
4k7	1	Metal/Carbon Film	1/4W	
8k2	2	Metal/Carbon Film	1/4W	
10k	1	Metal/Carbon Film	1/4W	
18k	2	Metal/Carbon Film	1/4W	
33k	1	Metal/Carbon Film	1/4W	
56k	1	Metal/Carbon Film	1/4W	
82k	2	Metal/Carbon Film	1/4W	
470k	3	Metal/Carbon Film	1/4W	
470pF	3	Ceramic	16v min.	
100n	1	Film	16v min.	
150n	3	Film	16v min.	
220n	2	Film	16v min.	
470n	2	Film	16v min.	
10uF	1	Electrolytic	16v min.	
100uF	1	Electrolytic	16v min.	
LED	2	Red, Diffused	5mm	
1N4742	2			
1N4001	1			
BC337	3			
100kA	1	PCB Right Angle	16mm	
100kB	1	PCB Right Angle	16mm	

1590B Drill Guide

4.43"W x 6.44"H

