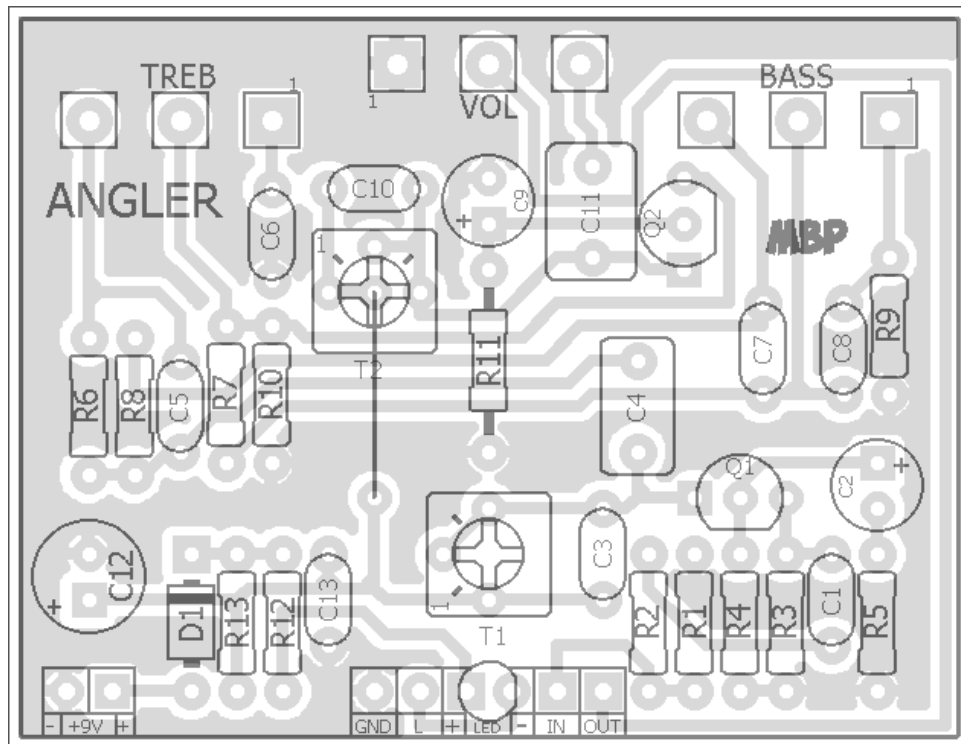


ANGLER

FX TYPE: Filter

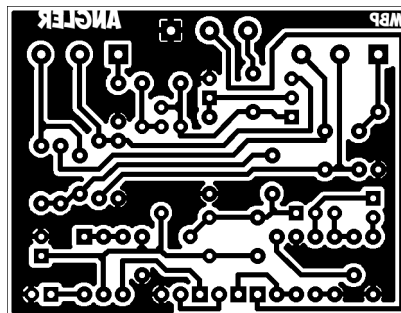
Based on the Mad Professor® Sea Blue EQ™

© 2017 madbeanpedals



Adjust trimmers to suggested bias voltages (see schem)

2.1" W x 1.63" H



Etcher's Paradise projects are intended for DIY use only! Commercial pedal manufacturing using these materials is strictly forbidden.

B.O.M.					
Resistors		Caps		Diodes	
R1	1M	C1	22n	D1	1N4001
R2	14k7	C2	22uF	Transistors	
R3	1M	C3	1n	Q1	J201
R4	14k7	C4	470n	Q2	J201
R5	1k	C5	4n7	Trimmer	
R6	47k	C6	22n	T1	25k
R7	5k6	C7	22n	T2	25k
R8	5k6	C8	220n	Pots	
R9	1k	C9	1uF	BASS	50kA
R10	1M	C10	1n	TREB	50kB
R11	14k7	C11	1uF	VOL	50kB
R12	4k7	C12	100uF		
R13	1k	C13	100n		

Shopping List				
Value	QTY	Type	Rating	
1k	3	Metal / Carbon Film	1/4W	
4k7	1	Metal / Carbon Film	1/4W	
5k6	2	Metal / Carbon Film	1/4W	
14k7	3	Metal / Carbon Film	1/4W	
47k	1	Metal / Carbon Film	1/4W	
1M	3	Metal / Carbon Film	1/4W	
1n	2	Film	16v min.	
4n7	1	Film	16v min.	
22n	3	Film	16v min.	
100n	1	Film	16v min.	
220n	1	Film	16v min.	
470n	1	Film	16v min.	
1uF	2	Film	16v min.	
22uF	1	Electrolytic	16v min.	
100uF	1	Electrolytic	16v min.	
1N4001	1			
J201	2			
25k	2	Bourns 3362p		
50kA	1	PCB Right Angle	16mm	
50kB	2	PCB Right Angle	16mm	

1590B Drill Guide

4.43"W x 6.46"H

