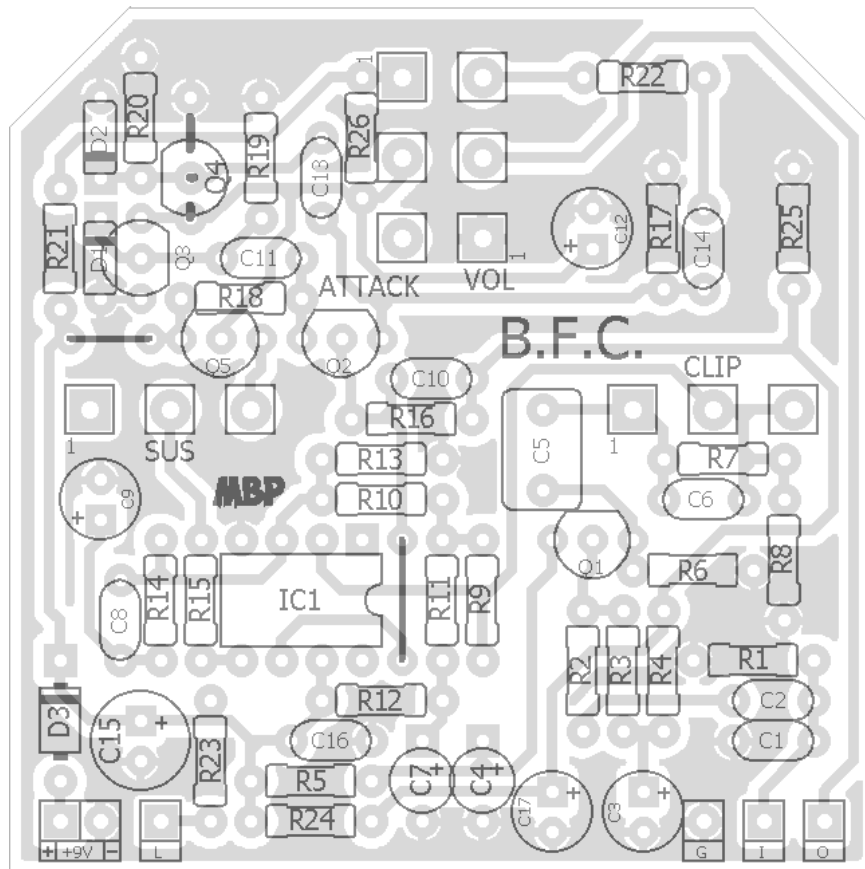


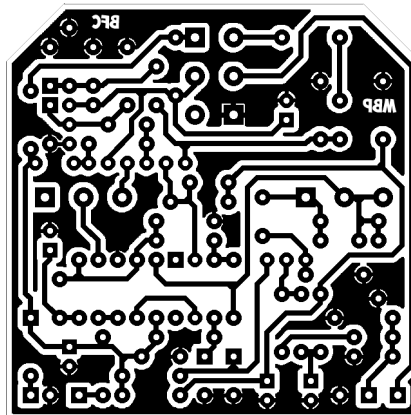
B.F.C.

FX TYPE: Compressor
Based on the Keeley Compressor™
© 2016 madbeanpedals



- Note the jumpers -

2.15" W x 2.15" H



Etcher's Paradise projects are intended for DIY use only! Commercial pedal manufacturing using these materials is strictly forbidden.

B.O.M.					
Resistors		Caps		Diodes	
R1	4M7	C1	150pF	D1, D2	1n914
R2	10k	C2	10n	D3	1N5817
R3	470k	C3	1uF	Transistors	
R4	470k	C4	1uF	Q1 - Q5	2N3904
R5	10k	C5	1uF	IC	
R6	10k	C6	2n2	IC1	LM3080
R7	390k	C7	1uF	Pots	
R8	1M	C8	10n	SUS	500kC
R9	1k	C9	1uF	VOL	50kB
R10	1k	C10	1n	CLIP	250kB
R11	220k	C11	10n	ATTACK	250kC
R12	56k	C12	10uF		
R13	1M	C13	10n		
R14	15k	C14	47n		
R15	27k	C15	100uF		
R16	150k	C16	100n		
R17	10k	C17	10uF		
R18	10k				
R19	1M				
R20	1M				
R21	10k				
R22	10k				
R23	4k7				
R24	56k				
R25	27k				
R26	390k				

Shopping List			
Value	QTY	Type	Rating
1k	2	Metal/Carbon Film	1/4W
4k7	1	Metal/Carbon Film	1/4W
10k	7	Metal/Carbon Film	1/4W
15k	1	Metal/Carbon Film	1/4W
27k	2	Metal/Carbon Film	1/4W
56k	2	Metal/Carbon Film	1/4W
150k	1	Metal/Carbon Film	1/4W
220k	1	Metal/Carbon Film	1/4W
390k	2	Metal/Carbon Film	1/4W
470k	2	Metal/Carbon Film	1/4W
1M	4	Metal/Carbon Film	1/4W
4M7	1	Metal/Carbon Film	1/4W
150pF	1	Ceramic	16v min.
1n	1	Film	16v min.
2n2	1	Film	16v min.
10n	4	Film	16v min.
47n	1	Film	16v min.
100n	1	Film	16v min.
1uF	1	Film	16v min.
1uF	4	Electrolytic	16v min.
10uF	2	Electrolytic	16v min.
100uF	1	Electrolytic	16v min.
1n914	2		
1N5817	1		
2N3904	5		
LM3080	1		
500kC	1	PCB Right Angle	16mm
50kB	1	PCB Right Angle	16mm
250kB	1	PCB Right Angle	16mm
250kC	1	PCB Right Angle	16mm

1590B Drill Guide

4.43"W x 6.46"H

